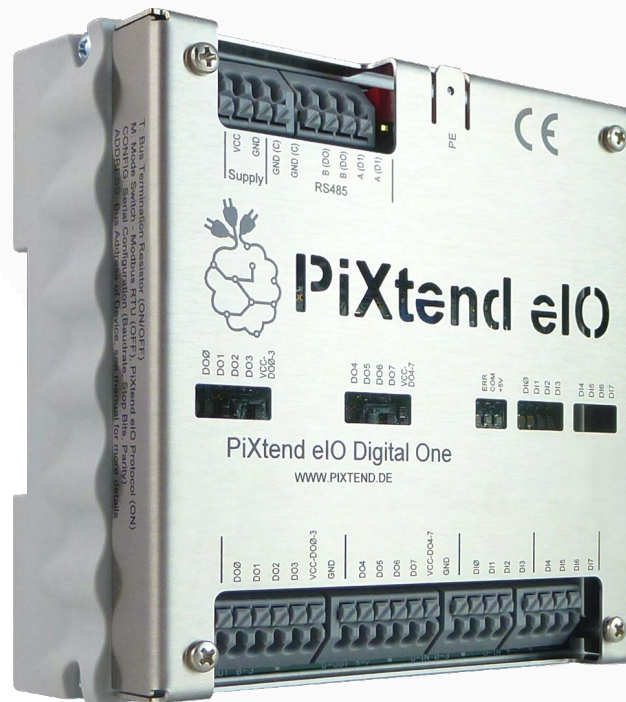


PiXtend® eIO I/O Module



PiXtend® eIO – Fast, reliable and connection friendly

- Counter function: Up/down counter, 2-channel counter independently of bus cycle
- Up to 32 devices can be operated in one network/bus
- The eIO devices can be addressed via Modbus RTU and our lean "PiXtend® eIO ASCII Protocol"

FUNCTION		PiXtend® eIO DIGITAL ONE	PiXtend® eIO ANALOG ONE
HARDWARE	POWER SUPPLY COMMUNICATION DIGITAL INPUTS (DI) INCL. COUNTING FUNCTION DIGITAL OUTPUTS (DO) ANALOG VOLTAGE INPUTS (AI-U) ANALOG CURRENT INPUTS (AI-I) ANALOG VOLTAGE OUTPUTS (AO-U) ANALOG CURRENT OUTPUTS (AO-I) WIRE-BREAK DETECTION TEMPERATURE RANGE DIMENSIONS - WITHOUT HOUSING (BASIC) DIMENSIONS - WITH HOUSING (PRO) FORM FACTOR CONFORMITY PiXtend®-COMPATIBILITY BAUD RATE	24 V DC ±20 % EIA/RS485, halbduplex (2-wire) 8x 3,3/5/12/24 V 8x 0.5 A, 5/12/24 V, HyperLogic <1 ms - - - - - 0 °C...+60 °C 96.3 x 101.8 x 21 mm 106 x 105 x 45 mm Aluminium housing for mounting on mounting rail CE, RoHS, Modbus, IEC 61131-2 (SPS-norm) direct: V2-L-, V2-S- with USB-RS485 Dongle from 2400 to 230400, parity: none, even or uneven	24 V DC ±20 % EIA/RS485, halbduplex (2-wire) - - 4x 0...5 V/0...10 V, 10 Bit 4x 0...20 mA, 10 Bit 4x 0...10 V, 12 Bit 2x 0...20 mA, 12 Bit bei 0...20 mA outputs 0 °C...+60 °C 96.3 x 101.8 x 21 mm 106 x 105 x 45 mm Aluminium housing for mounting on mounting rail CE, RoHS, Modbus, IEC 61131-2 (SPS-norm) direct: V2-L-, V2-S- with USB-RS485 Dongle from 2400 to 230400, parity: none, even or uneven
SOFTWARE	SUPPORTED PROTOCOLS FAST DIGITAL LOGIC "HYPERLOGIC" SECURITY SUPPORT FOR	Modbus RTU, PiXtend® eIO ASCII Protocol Available Watchdog-Timer, CRC-checksum, Parity-Check CODESYS® V3, Java, C, C++, C#, Phyton, FHEM, Node-RED	Modbus RTU, PiXtend® eIO ASCII Protocol - Watchdog-Timer, CRC-checksum, Parity-Check CODESYS® V3, Java, C, C++, C#, Phyton, FHEM, Node-RED

Product Highlights

PiXtend® eIO is the I/O expansion system for standard digital and analog inputs and outputs and acts as an ideal complement to our PiXtend® V2 controller. Thanks to ultra-fast HyperLogic, simple, logical links between inputs and outputs can be implemented by the modules themselves, eliminating the need to transmit data via the bus system.

The devices are connected via robust RS485 bus. Modbus RTU support lets you easily integrate eIO devices with existing systems. PiXtend® eIO: Simple and user-friendly communication and protocols!

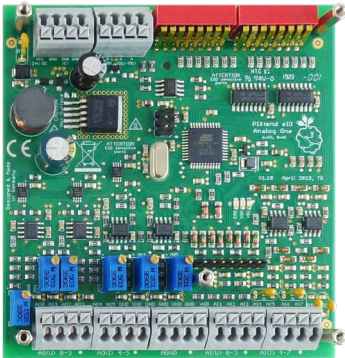
Client Benefits

- Industrial outputs, 8x HighSide switch, 2-group feed, fully protected
- Watchdog timer for data transmission monitoring, secured via CRC checksum. Where required, outputs can be set to an adjustable safe state if required
- Reduced software workload through local event counting and logic functions
- Easy integration into existing systems

Applications

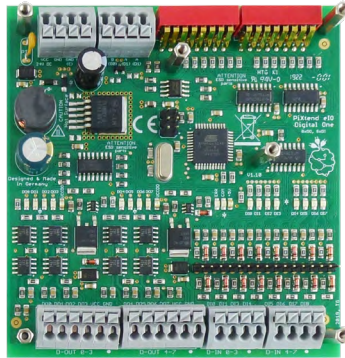
- Mechanical engineering controller
- Plant engineering controller

Analog One Basic



Item no.: 50199 009

Digital One Basic



Item no.: 50199 007

- Board – basic version

PiXtend® eIO Pro Models

Analog One Pro



Item no.: 50199 010

Digital One Pro



Item no.: 50199 008

- Complete board – Pro
- Aluminium top hat rail housing
- Brushed stainless steel cover



About Kontron

Kontron AG is a leading IoT technology company. For more than 20 years, Kontron has been supporting companies from a wide range of industries to achieve their business goals with intelligent solutions. From automated industrial operations, smarter and safer transport to advanced communications, connectivity, medical, and energy solutions, the company delivers technologies that add value for its customers. With the acquisition of Katek SE in early 2024, Kontron significantly strengthens its portfolio with the new GreenTec division, focusing on solar energy and eMobility, and grows to around 8,000 employees in over 20 countries worldwide. Kontron is listed on the SDAX® and TecDAX® of the German Stock Exchange.

For more information, please visit: www.kontron.com

About Kontron Electronics

Kontron Electronics GmbH is a full-service provider in the electronics industry, offering comprehensive services in development, rapid prototyping, and manufacturing. The company's portfolio includes proprietary and customer-specific products, development and engineering services for complex electronic components, modules, and systems, as well as production and assembly services for complete assemblies. The company is part of the Kontron AG technology group.

For more information please visit: www.kontron-electronics.com

Your Contact

Kontron Electronics GmbH

Max-Planck-Straße 6
72636 Frickenhausen, Germany
Tel.: +49 7022 4057-0
info@kontron-electronics.de

www.kontron-electronics.com

Global Headquarters

Kontron Europe GmbH

Gutenbergstraße 2
85737 Ismaning, Germany
Tel.: +49 821 4086-0
info@kontron.com

www.kontron.com

