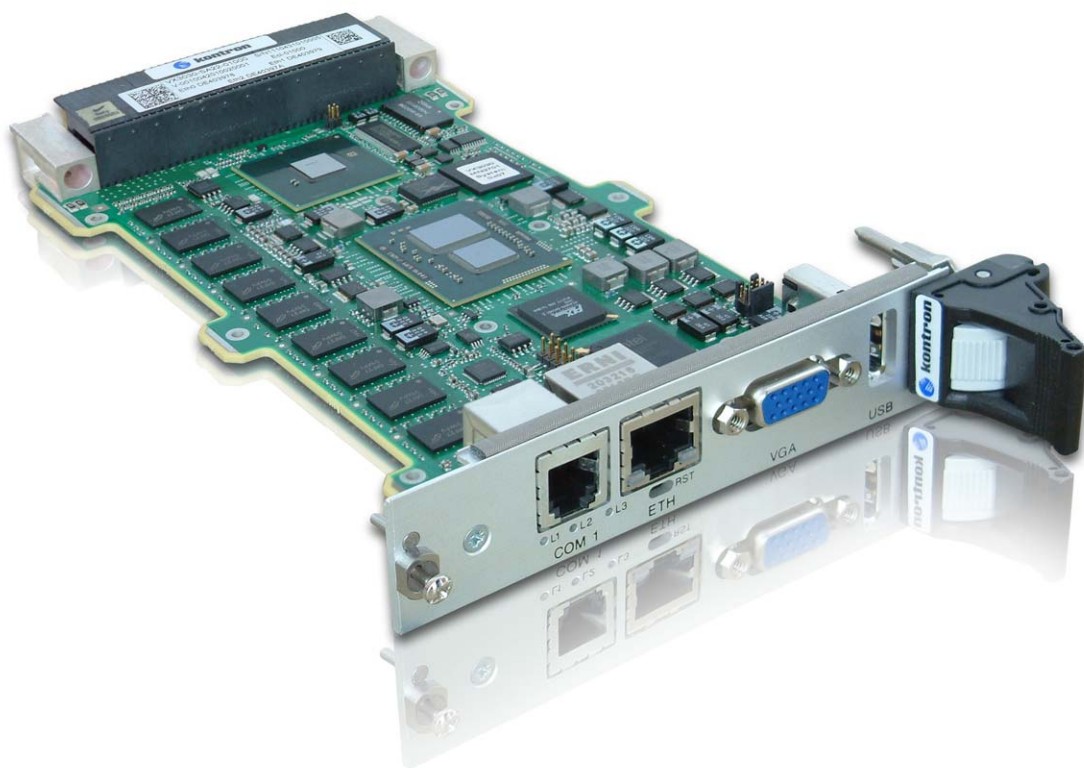


» VX3030 «



AMI BIOS User Reference Manual

SD.DT.F81-11e - October 2015

Revision History

Publication Title:		VX3030 AMI BIOS User Manual
Doc. ID:		SD.DT.F81-11e
Rev.	Brief Description of Changes	Date of Issue
11e	New ID15247	10-2015
10e	New ID14247	09-2014
9e	New section: 11.4 - BIOS ID13077 VX3030	05-2013
8e	New Item # 9 in section 11.2 - Known Problems Table	04-2013
7e	New ID 13077	04-2013
6e	New ID 12304 New section 6.3: North bridge and display hot plug configuration Update of section 11.2 Known Problems	11-2012
5e	New ID 12247 and update of section 11.2 - Known Problems Table	09-2012
4e	New ID 12149 Section 11.2 New CRPs 4020 & 4028	06-2012
3e	Chapter 5: New sections: - USC Misc Configuration - Board Misc Configuration - SPD Configuration Chapter 6: New section - South Bridge and Sata Configuration Chapter 11: Complete revision of the chapter	03-2012
2e	New EFI Shell Command - "kuuid" - section 10.1.26	07-2011
1e	New ID11159	06-2011
0e	Initial Version	04-2011

Copyright © 2015 Kontron AG. All rights reserved. All data is for information purposes only and not guaranteed for legal purposes. Information has been carefully checked and is believed to be accurate; however, no responsibility is assumed for inaccuracies. Kontron and the Kontron logo and all other trademarks or registered trademarks are the property of their respective owners and are recognized. Specifications are subject to change without notice.

Proprietary Note

This document contains information proprietary to Kontron. It may not be copied or transmitted by any means, disclosed to others, or stored in any retrieval system or media without the prior written consent of Kontron or one of its authorized agents.

The information contained in this document is, to the best of our knowledge, entirely correct. However, Kontron cannot accept liability for any inaccuracies or the consequences thereof, or for any liability arising from the use or application of any circuit, product, or example shown in this document.

Kontron reserves the right to change, modify, or improve this document or the product described herein, as seen fit by Kontron without further notice.

Trademarks

This document may include names, company logos and trademarks, which are registered trademarks and, therefore, proprietary to their respective owners.

Environmental Protection Statement

This product has been manufactured to satisfy environmental protection requirements where possible. Many of the components used (structural parts, printed circuit boards, connectors, batteries, etc.) are capable of being recycled.

Final disposition of this product after its service life must be accomplished in accordance with applicable country, state, or local laws or regulations.



Environmental protection is a high priority with Kontron.

Kontron follows the DEEE/WEEE directive.

You are encouraged to return our products for proper disposal.

The Waste Electrical and Electronic Equipment (WEEE) Directive aims to:

- > reduce waste arising from electrical and electronic equipment (EEE)
- > make producers of EEE responsible for the environmental impact of their products, especially when they become waste
- > encourage separate collection and subsequent treatment, reuse, recovery, recycling and sound environmental disposal of EEE
- > improve the environmental performance of all those involved during the lifecycle of EEE

Conventions

This guide uses several types of notice: Note, Caution, ESD.



Note: this notice calls attention to important features or instructions.



Caution: this notice alert you to system damage, loss of data, or risk of personal injury.



ESD: This banner indicates an Electrostatic Sensitive Device.

All numbers are expressed in decimal, except addresses and memory or register data, which are expressed in hexadecimal. The prefix `0x` shows a hexadecimal number, following the `C` programming language convention.

The multipliers `k`, `M` and `G` have their conventional scientific and engineering meanings of $*10^3$, $*10^6$ and $*10^9$ respectively. The only exception to this is in the description of the size of memory areas, when `K`, `M` and `G` mean $*2^{10}$, $*2^{20}$ and $*2^{30}$ respectively.



When describing transfer rates, `k` `M` and `G` mean $*10^3$, $*10^6$ and $*10^9$ *not* $*2^{10}$ $*2^{20}$ and $*2^{30}$.

In PowerPC terminology, multiple bit fields are numbered from 0 to n, where 0 is the MSB and n is the LSB. PCI and CompactPCI terminology follows the more familiar convention that bit 0 is the LSB and n is the MSB.

Signal names ending with an asterisk (*) or a hash (#) denote active low signals; all other signals are active high.

Signal names follow the PICMG 2.0 R3.0 CompactPCI Specification and the PCI Local Bus 2.3 Specification.

For Your Safety

Your new Kontron product was developed and tested carefully to provide all features necessary to ensure its compliance with electrical safety requirements. It was also designed for a long fault-free life. However, the life expectancy of your product can be drastically reduced by improper treatment during unpacking and installation. Therefore, in the interest of your own safety and of the correct operation of your new Kontron product, you are requested to conform with the following guidelines.

High Voltage Safety Instructions



Warning!

All operations on this device must be carried out by sufficiently skilled personnel only.



Caution, Electric Shock!

Before installing a not hot-swappable Kontron product into a system always ensure that your mains power is switched off. This applies also to the installation of piggybacks. Serious electrical shock hazards can exist during all installation, repair and maintenance operations with this product. Therefore, always unplug the power cable and any other cables which provide external voltages before performing work.

Special Handling and Unpacking Instructions



ESD Sensitive Device!

Electronic boards and their components are sensitive to static electricity. Therefore, care must be taken during all handling operations and inspections of this product, in order to ensure product integrity at all times

Do not handle this product out of its protective enclosure while it is not used for operational purposes unless it is otherwise protected.

Whenever possible, unpack or pack this product only at EOS/ESD safe work stations. Where a safe work station is not guaranteed, it is important for the user to be electrically discharged before touching the product with his/her hands or tools. This is most easily done by touching a metal part of your system housing.

It is particularly important to observe standard anti-static precautions when changing piggybacks, ROM devices, jumper settings etc. If the product contains batteries for RTC or memory backup, ensure that the board is not placed on conductive surfaces, including anti-static plastics or sponges. They can cause short circuits and damage the batteries or conductive circuits on the board.

General Instructions on Usage

In order to maintain Kontron's product warranty, this product must not be altered or modified in any way. Changes or modifications to the device, which are not explicitly approved by Kontron and described in this manual or received from Kontron's Technical Support as a special handling instruction, will void your warranty.

This device should only be installed in or connected to systems that fulfill all necessary technical and specific environmental requirements. This applies also to the operational temperature range of the specific board version, which must not be exceeded. If batteries are present, their temperature restrictions must be taken into account.

In performing all necessary installation and application operations, please follow only the instructions supplied by the present manual.

Keep all the original packaging material for future storage or warranty shipments. If it is necessary to store or ship the board, please re-pack it as nearly as possible in the manner in which it was delivered.

Special care is necessary when handling or unpacking the product. Please consult the special handling and unpacking instruction.

Table Of Contents

Chapter 1 - Overview	1
1.1 Structure	1
1.2 Related Documents	1
Chapter 2 - Accessing the SETUP Menu	2
2.1 Working with First Level Menu Items	3
2.2 Boot Manager Menu	3
Chapter 3 - Main Menu	4
3.1 Platform Information	5
3.2 System Language	6
3.3 System Date and Time	6
Chapter 4 - Advanced Menu	7
4.1 USB Configuration	8
4.1.1 Legacy USB Support	9
4.2 Serial Console Redirection	10
4.2.1 COM0/COM1 Console Redirection	11
4.2.2 COM0/COM1 Console Redirection Settings	12
4.2.2.1 Terminal Type	13
4.2.2.2 Bits per second	14
4.2.2.3 Data Bits	15
4.2.2.4 Parity	16
4.2.2.5 Stop Bits	17
4.2.2.6 Flow Control	18
4.2.2.7 Recorder Mode	19
4.2.2.8 Resolution	20
4.2.2.9 Legacy OS Redirection	21
Chapter 5 - Kontron Menu	22
5.1 CPU Configuration	23
5.2 Ethernet Front Panel Configuration	24
5.3 PCI Configuration	25
5.3.1 PCI-Express PEG0 Link Configuration	25
5.3.2 LPC Serial IRQ Configuration	26
5.4 USB Misc Configuration	27
5.5 VPD – VITAL PRODUCT DATA	28
5.6 UUID Configuration	29

5.7	VPX Configuration	30
5.7.1	VPX Maskable Reset	30
5.7.2	VPX Reset Propagation to VPX Backplane	31
5.7.3	VPX SYSRESET Input	32
5.7.4	VPX Switch NT Mode	32
5.7.5	VPX Local Reset	33
5.7.6	VPX Board Delay	33
5.7.7	VPX Common Clock	34
5.8	ALARM Configuration	35
5.9	Serial Configuration	36
5.9.1	COM0 Mode	36
5.9.2	COM1 Mode	36
5.10	Board Misc Configuration	37
5.11	SPD Configuration	38
Chapter 6 -	Chipset Menu	39
6.1	South Bridge & PXE ROM configuration	40
6.2	South Bridge & SATA Configuration	41
6.3	North Bridge & Display Hot Plug configuration	42
Chapter 7 -	Boot Menu	45
7.1	Quiet boot	46
7.2	UEFI boot	46
7.3	Setup Prompt Timeout	46
7.4	Bootup Numlock State	46
7.5	Boot Option Priorities	47
7.6	Network Device BSS Priorities (when PXE ROM Enabled)	48
7.7	Hard Drive BBS Priorities	50
7.8	Delete Boot Option	51
Chapter 8 -	Security Menu	52
8.1	Enter Administrator or user password	53
Chapter 9 -	Save & Exit Menu	55
9.1	Option with Exit or reset	56
9.2	Option to Save Discard Restore SETUP	56
9.3	Saving a user configuration	56
9.4	Boot Override	56

Chapter 10 - EFI SHELL	57
10.1 EFI Shell Command	57
10.1.1 alias	59
10.1.2 amlview	60
10.1.3 bcfg	61
10.1.4 cd	62
10.1.5 cls	63
10.1.6 connect	63
10.1.7 cpuutil	64
10.1.8 date	65
10.1.9 devices	65
10.1.10 dh	66
10.1.11 disconnect	67
10.1.12 drvcfg	68
10.1.13 drivers	70
10.1.14 dumpacpi	71
10.1.15 dumpaml	71
10.1.16 echo	72
10.1.17 exit	72
10.1.18 for	73
10.1.19 goto	74
10.1.20 help	75
10.1.21 if	76
10.1.22 ifconfig	77
10.1.23 kdiag	77
10.1.24 kflash	78
10.1.25 kmac	78
10.1.26 kpld	79
10.1.27 kuuid	80
10.1.28 kvpd	81
10.1.29 kvpx	82
10.1.30 ls	84
10.1.31 map	86
10.1.32 mem	89
10.1.33 memmap	91
10.1.34 mm	92
10.1.35 mv	95
10.1.36 pause	96
10.1.37 pci	97
10.1.38 ping	100
10.1.39 reconnect	100
10.1.40 reset	100
10.1.41 set	101
10.1.42 shift	102
10.1.43 smbiosview	103
10.1.44 smbutil	104
10.1.45 time	104

10.2 Environment Variables	105
10.2.1 Bootcmd	105
10.2.2 StartupAuto	105
10.2.3 StartupDelay	106
Chapter 11 - BIOS Versions Description	107
11.1 Recommendations and Known Limitations	107
11.2 Known Problems Table	108
11.2.1 How to use the table:	108
11.2.2 Detailed description of the problems	109
11.3 BIOS ID12304 VX3030 Release Notes	112
11.4 BIOS ID13077 VX3030 Release Notes	113
11.5 BIOS ID14247 VX3030 Release Notes	114
11.6 BIOS ID15247 VX3030 Release Notes	115
Chapter 12 - Use Cases	116
12.1 DEPLOY: How to deploy VX3030 - BIOS	116
12.1.1 Cloning a board:	116
12.1.2 Managing a pool of VX3030:	117
12.2 DEVEL: How to develop applications with VX3030 - BIOS	117
12.3 EVAL: How to benchmark VX3030 - BIOS	117
12.4 TROUBLESHOOT: How to troubleshoot VX3030 - BIOS	117
Appendix A - How to Update and Restore BIOS	118
A.1 Update BIOS from UEFI Shell using USB device	118
A.2 Restore or Update BIOS from Rescue BIOS	119
A.3 Record BIOS image ROM and setting from UEFI Shell using USB device	119

Chapter 1 - Overview

This manual introduces the SETUP, EFI-SHELL of the AMI BIOS firmware available on Kontron VX3030 boards.

The BIOS SETUP is a ROM-based configuration utility that displays the system's configuration status and provides users with a tool to set their system parameters. These parameters are stored in the non-volatile System Flash which saves this information even when the power is turned off. When the system is turned on, the system is configured with the last saved values. Using easy-to-use pull down menus, users can configure such items as:

- > Date & Time
- > USB routing
- > Serial Port, Terminal Type, Console redirection
- > CPU Frequency
- > Boot method and priority
- > Security password

■ This manual applies to the release ID15247 of the AMI BIOS *

** Enter SETUP/MAIN menu to get BIOS ID*

1.1 Structure

- > Chapter 2 "Accessing SETUP Menu"
- > Chapter 3 to Chapter 9 "Sampling of menu items"
- > Chapter 10 "EFI-SHELL"
- > Chapter 11 "Known Limitations"
- > Chapter 12 "Use Cases"
- > Appendix A "How To Update the BIOS"

1.2 Related Documents

» VX3030 Hardware

- > VX3030 Hardware Release Notes CA.DT.A88
- > VX3030 User's Guide CA.DT.A87

» VX3030 Software

- > VX3030 - Release Notes for BSP Fedora 12 SD.DT.F80
- > VX3030 - PBIT User's Guide SD.DT.F94

2.1 Working with First Level Menu Items

To access the menu of your choice:

- > Use the < → > or < ← > keys to select the desired item Menu
- > Use the < ↑ > or < ↓ > keys to highlight the desired setting or submenu in item
- > Press < Enter > key to validate your choice.

Depending on the menu item selected, one of the following occurs:

- > A pop-up window prompts users to enable/disable the selected item.
- > A window appears with a list of options to choose from.
- > A window appears prompting the user to supply input.
- > Links to the submenu.

While the menu item is highlighted, its corresponding Help text is also displayed to help explain the purpose of the item.

- > Use < ESC > to get out of the current menu item and jump to its parent item

2.2 Boot Manager Menu

To access the Boot Manager menu, press < F7 > during system boot up. The Boot Manager menu is used to select the boot device.



- > Select a device from the list (Use the < ↑ > or < ↓ > to highlight the desired item)
- > Press < ENTER > to boot the selected device or enter setup

Chapter 3 - Main Menu

The Main Menu provides general system information and is the first accessible menu page.

```
Aptio Setup Utility - Copyright (C) 2010 American Megatrends, Inc.
Main Advanced Kontron Chipset Boot Security
-----
BIOS Information
BIOS Vendor      American Megatrends
Core Version     4.6.3.5
Project Version  OABPZ 0.20 x64
Build Date      09/04/2014 15:36:36
BIOS ID         15247

UnCore Information
IGD VBIOS Version 1973
GMCH Version     18
Total Memory     2048 MB (DDR3:1067 MH

Memory Slot0     1024 MB (DDR3)
Memory Slot2     1024 MB (DDR3)

Platform Information
System Language  [English]

^|Platform Information
*|
*|
*|
*|
*|
*|
*|
*|<-----
*|>: Select Screen
*|^v: Select Item
*|Enter: Select
*|+/-: Change Opt.
*|F1: General Help
+|F2: Previous Values
+|F3: Optimized Defaults
+|F4: Save & Exit
v|ESC: Exit
-----
Version 2.01.1204. Copyright (C) 2010 American Megatrends, Inc.
```

Three submenus or settings, described below, are available in the main menu:

- > Platform Information, section 3.1 page 5
- > System Language, section 3.2 page 6
- > System Date and Time, section 3.3 page 6

3.1 Platform Information

```

Aptio Setup Utility - Copyright (C) 2010 American Megatrends, Inc.
Main
-----+-----
Processor              Arrandale              ^|
                      *|
Board Information      *|
Board ID              VX3030                 *|
Fab ID                1                       *|
                      *|
Core Information       *|
Processor Type        Intel(R) Core(TM) i7    *|
EMT64                 Supported             *|
Processor Speed       1999 MHz              *|
Processor Stepping    20655                 *|<-----
Microcode Revision    4                      *|>: Select Screen
Processor Core        Dual                       *| ^v: Select Item
SMT                   Supported                    *| Enter: Select
                      +|+/-: Change Opt.
                      +|F1: General Help
UnCore Information    +|F2: Previous Values
IGD VBIOS Version     1973                  +|F3: Optimized Defaults
GMCH Version          18                     +|F4: Save & Exit
QPI Frequency         4.800 GT/s           v|ESC: Exit
-----+-----
Version 2.01.1204. Copyright (C) 2010 American Megatrends, Inc.
    
```

```

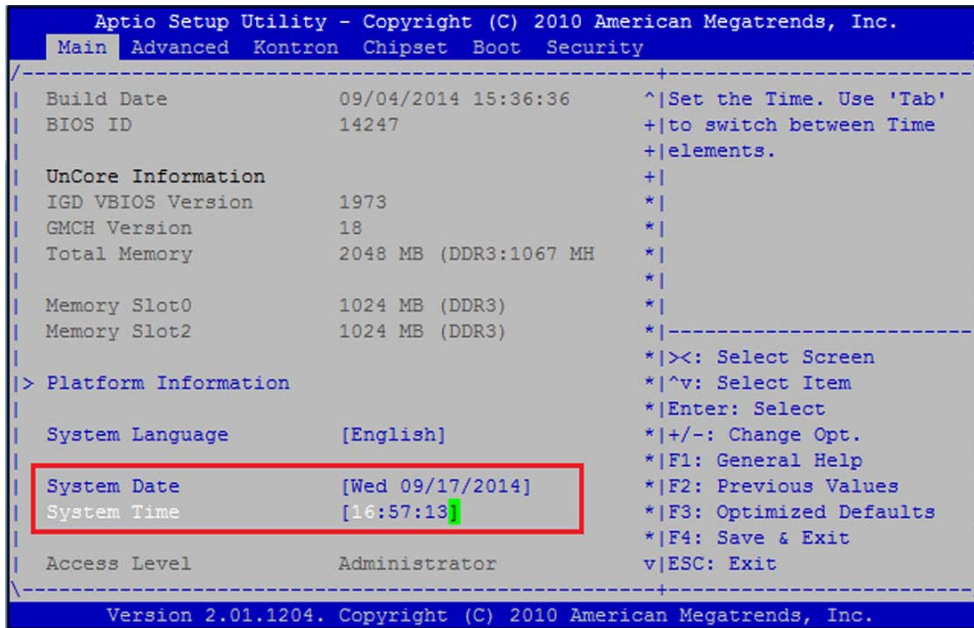
Aptio Setup Utility - Copyright (C) 2010 American Megatrends, Inc.
Main
-----+-----
Processor Speed       1999 MHz              ^|
Processor Stepping    20655                 +|
Microcode Revision    4                      +|
Processor Core        Dual                       +|
SMT                   Supported                    +|
                      +|
UnCore Information    +|
IGD VBIOS Version     1973                  *|
GMCH Version          18                     *|
QPI Frequency         4.800 GT/s           *|<-----
Total Memory          2048 MB (DDR3:1067 MH *|>: Select Screen
                      *| ^v: Select Item
Memory Slot0          1024 MB (DDR3)        *| Enter: Select
Memory Slot2          1024 MB (DDR3)        *|+/-: Change Opt.
                      *|F1: General Help
PCH Information       *|F2: Previous Values
PCH Version           06 (B3 Stepping)    *|F3: Optimized Defaults
                      *|F4: Save & Exit
KSC EC Version        01.00                 v|ESC: Exit
-----+-----
Version 2.01.1204. Copyright (C) 2010 American Megatrends, Inc.
    
```

The platform information Menu displays the processor, graphic, memory and PCH (Platform Controller Hub) specific information. Platform information displays all content by scrolling down using the arrow key <↓>.

3.2 System Language

Nothing can be changed in this menu. Only English language is supported in this version.

3.3 System Date and Time



The submenu is accessible from the Main menu by using <↓> and <↑> arrows keys. The System Date and Time window allows the user to specify the day, month, and year as well as the hour, minute, and second. The clock is represented in a 24-hour format.

To update the System Date, use the <+> or <-> keys to select the Month (<+> to increase / <-> to decrease the number of the month), and press the <Enter> key to validate your choice. Proceed in the same way for the day and finally for the year.

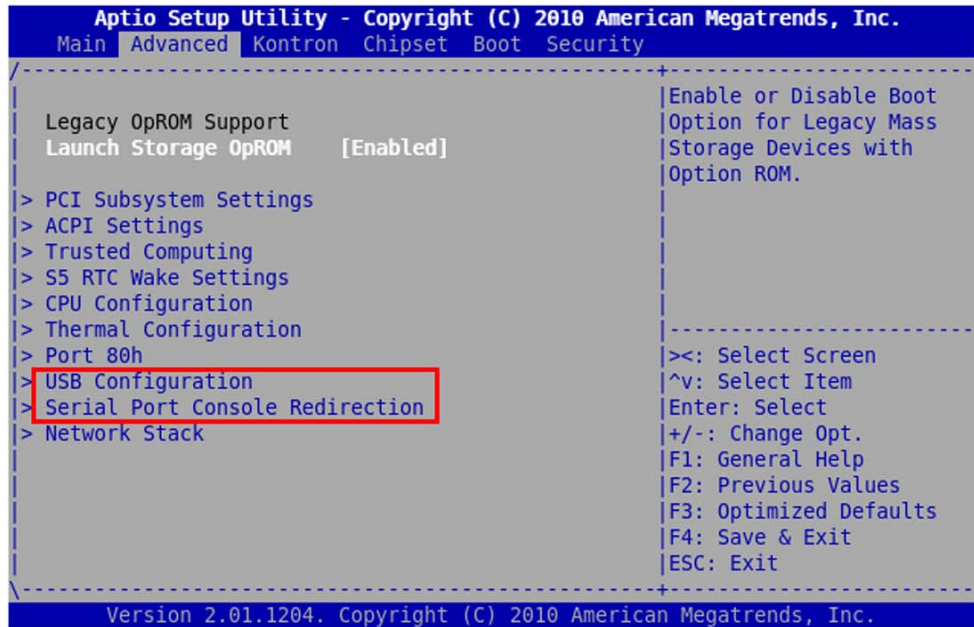
To update the Time, use the <+> or <-> keys to select the Hour (<+> to increase / <-> to decrease the hour), and press the <Enter> key to validate your choice. Proceed in the same way for the minutes and finally for the seconds.

The firmware always reads a RTC to display the date and time at each power-on. This RTC needs to be supplied by the external battery otherwise the firmware will display the last power ON date for the System Date and System Time (the current date is recorded at power ON).

The VX3030 boards can operate safely without a battery fitted. In this case, the non-volatile board settings are managed this way:

- > All BIOS user settings are kept forever (in a specific area of the BIOS Flash)
- > The Date/Time is lost at each Power-Down, and without battery fitted, the BIOS displays the last Power-Down Date/Time instead of the current Date/Time. Note that at the first Power-Up, the BIOS displays the Build Date of the BIOS in Date/Time fields.

Chapter 4 - Advanced Menu



The Advanced Menu provides system-level controls to configure device settings:

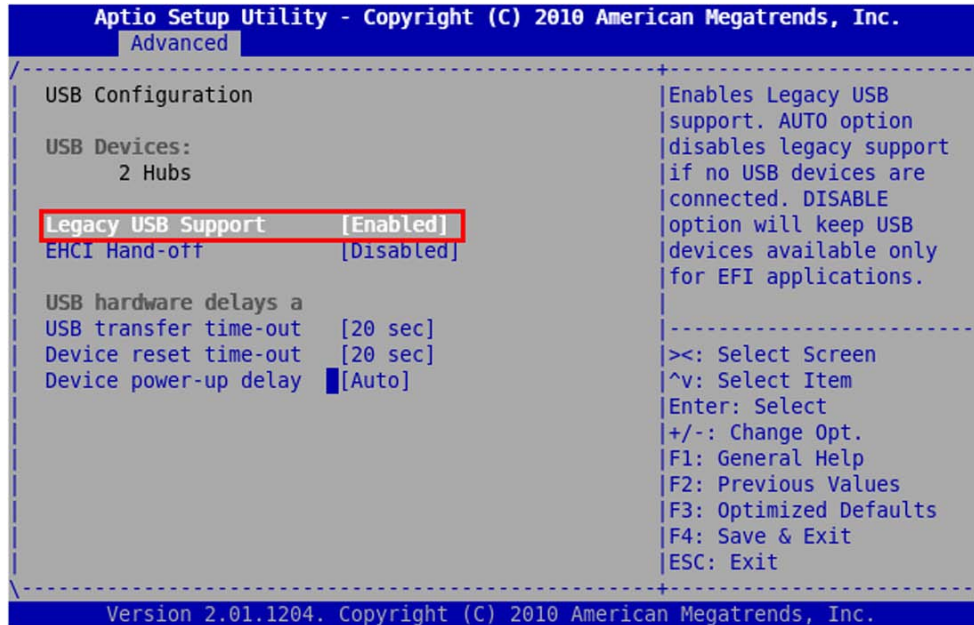
- ▶ USB Configuration (for Legacy support) Section 4.1 page 8
- ▶ Serial Port Console redirection Section 4.2 page 10

Other following submenus are Reserved and Not to be used:

- ▶ PCI Subsystem Settings
- ▶ ACPI Settings
- ▶ Trusted Computing
- ▶ S5 RTC Wake Settings
- ▶ CPU Configuration
- ▶ ME Configuration
- ▶ Thermal Configuration
- ▶ Port 80h

4.1 USB Configuration

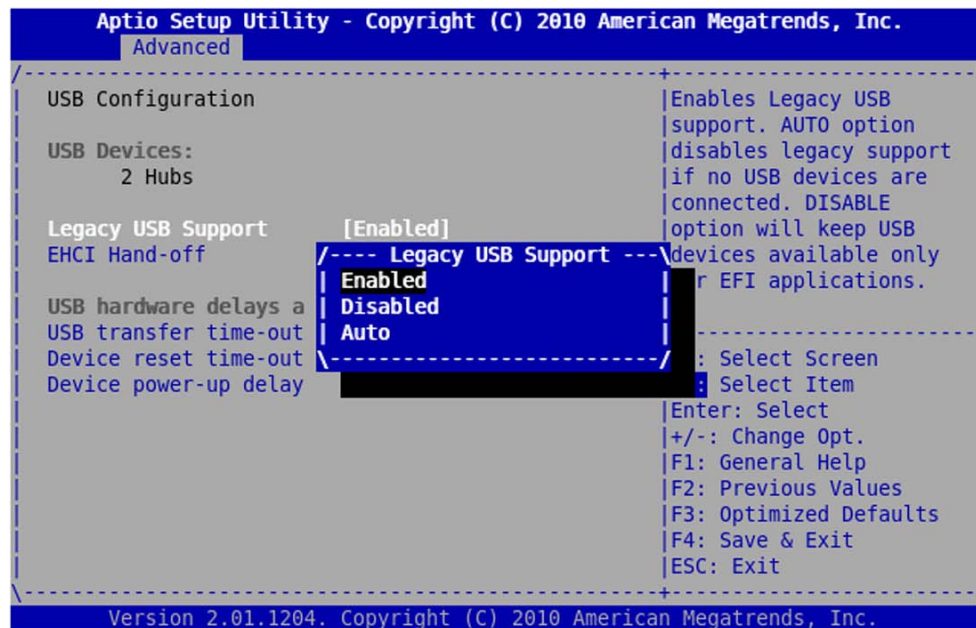
This menu can be used to enable/disable the Legacy USB Support (such as DOS legacy environment) . It can be used to avoid booting on an USB device when an USB device is connected. This is the only option that is not reserved in the menu.



Other following options are Reserved and Not to be used:

- ▶ EHCI Hand-off
- ▶ USB transfer time-out [20 sec]
- ▶ Device reset time-out [20 sec]
- ▶ Device power-up delay [Auto]

4.1.1 Legacy USB Support



Select menu Legacy Usb Support to change it. There is three options to choose from:

- ▶ Enabled
- ▶ Disabled
- ▶ Auto

AUTO option disable Legacy Support if no USB device is connected. Disabled option will keep USB device available for EFI application.

4.2 Serial Port Console Redirection

The BIOS console can be redirected on serial COM0 and/or serial COM1 with the Console Redirection menus. Also the characteristics of COM0 or COM1 serial line can be modified with Console Redirection Settings menus as described after:

```

Aptio Setup Utility - Copyright (C) 2010 American Megatrends, Inc.
  Advanced
-----
COM0
  Console Redirection    [Enabled]
> Console Redirection Settings

COM1
  Console Redirection    [Disabled]
> Console Redirection Settings

Serial Port for Out-of-Band Management/
Windows Emergency Management Services (EMS)
  Console Redirection    [Disabled]
  Out-of-Band Mgmt Port  [COM0]
  Data Bits              8
  Parity                 None
  Stop Bits              1
  Terminal Type          [VT-UTF8]

-----
| Console Redirection
| Enable or Disable.
|
|
|
|-----|
|><: Select Screen
|^v: Select Item
|Enter: Select
|+/-: Change Opt.
|F1: General Help
|F2: Previous Values
|F3: Optimized Defaults
|F4: Save & Exit
|ESC: Exit
|
-----
Version 2.01.1204. Copyright (C) 2010 American Megatrends, Inc.

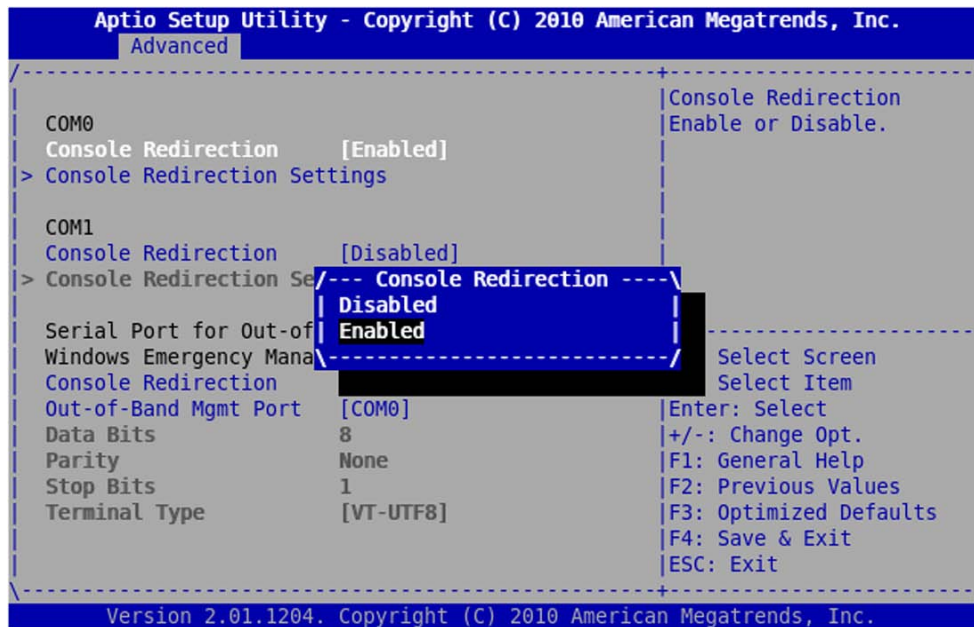
```

Other following options are Reserved and Not to be Used:

- ▶ Serial Port for Out-of-Band Management/Windows Emergency Management Services (EMS)
Console Redirection & Out-of-Band Mgmt Port

4.2.1 COM0/COM1 Console Redirection

User has the option to enable/disable serial Console Redirection on COM0 or on COM1. COM0 is a serial line available on front panel of VX3030 and COM1 is available on backplane. To have SETUP display and EFI shell visible on a serial line it is necessary to enable the Console redirection on it. COM0 Console Redirection is enabled by default and COM1 is disabled by default.

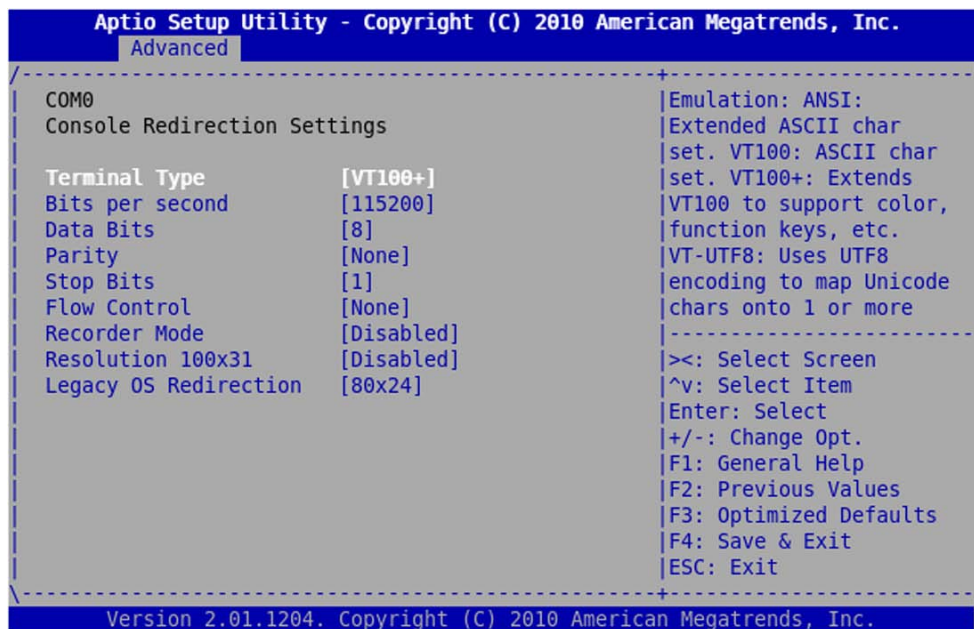


In case of the user would like to display the PXE messages on serial COM1 instead of serial COM0, serial COM0 redirection must be disabled because only one serial port is selected by PXE.

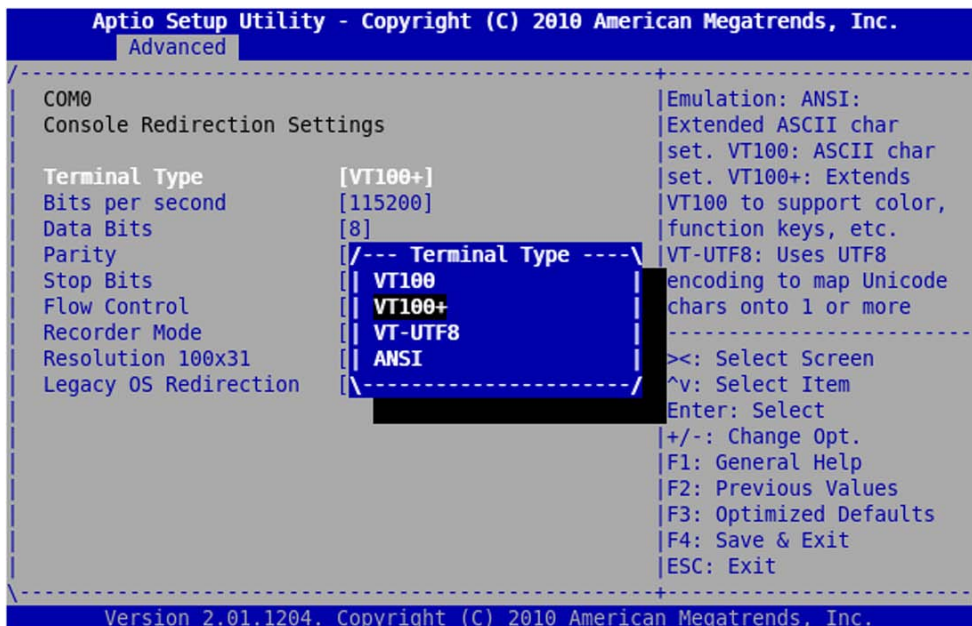
4.2.2 COM0/COM1 Console Redirection Settings

This menu allows to configure several parameters for a serial line on which the console redirection has been enabled. Configurable parameters are:

- ▶ Terminal Type
- ▶ Bits per second
- ▶ Data Bits
- ▶ Parity
- ▶ Stop Bits
- ▶ Flow Control
- ▶ Recorder Mode
- ▶ Resolution 100x31
- ▶ Legacy OS Redirection



4.2.2.1 Terminal Type

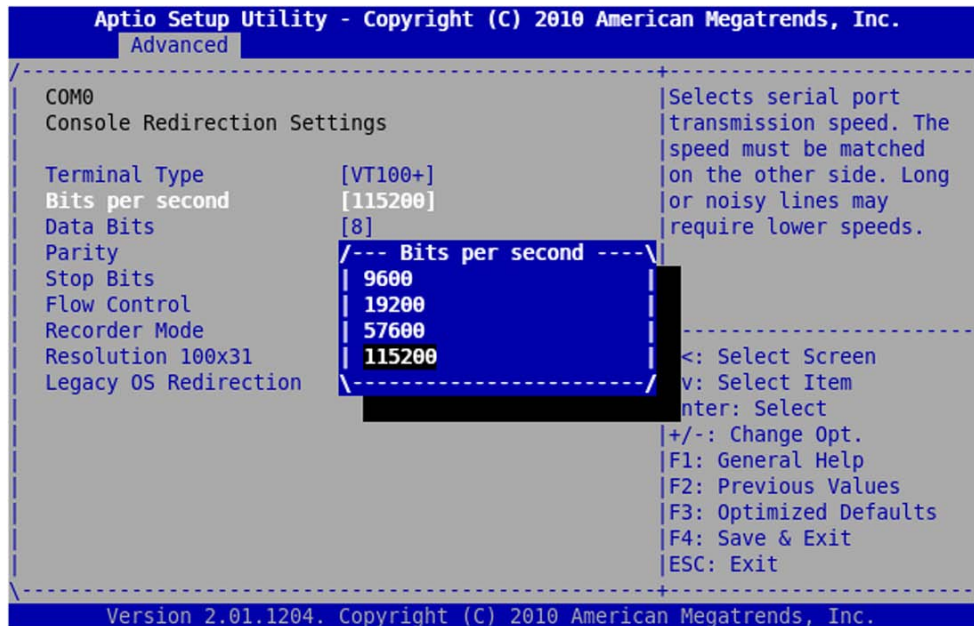


Set Terminal Type:

- ▶ VT100 ASCII Char set
- ▶ VT100+ Extends VT100 to support colours, functions keys
- ▶ VT-UTF8 Uses UTF8 encoding to map Unicode onto 1 or more
- ▶ ASCII Extended ASCII char set

Default is VT100+

4.2.2.2 Bits per second

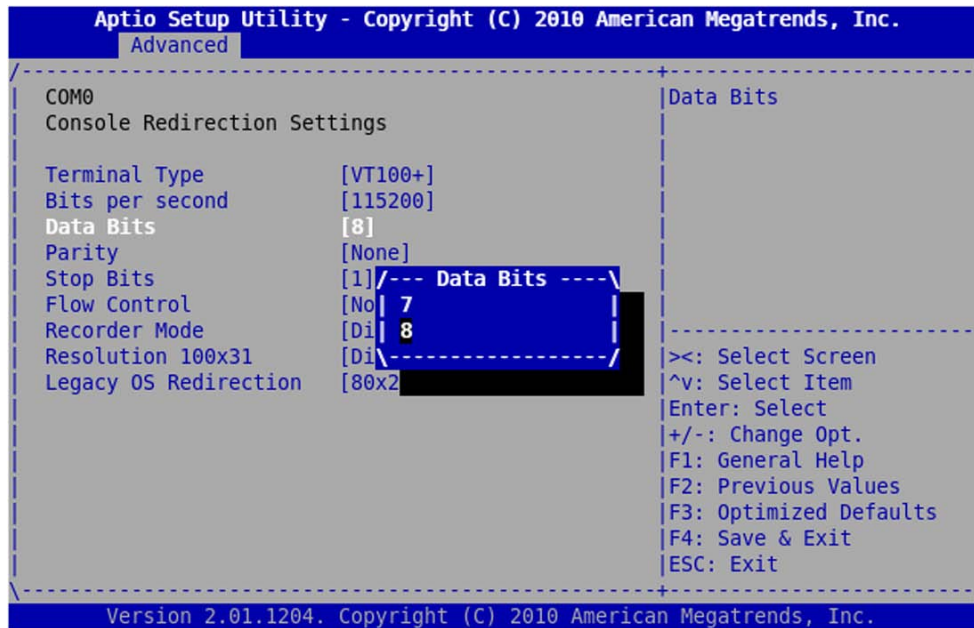


Set bits per second

- ▶ 9600
- ▶ 19200
- ▶ 57600
- ▶ 115200

Default and recommended value is 115200 bits per second for serial line baud rate on COM0 and COM1

4.2.2.3 Data Bits



Set Data bit number for serial line COM0 or COM1

- ▶ 7
- ▶ 8

Default value is 8

4.2.2.4 Parity

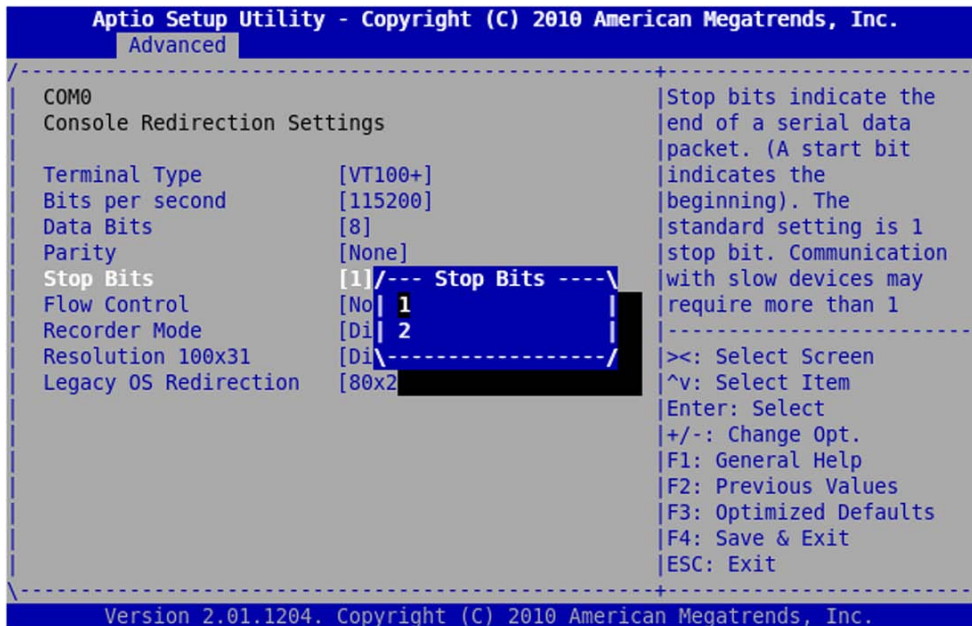


Set Parity bit

- ▶ None
- ▶ Even
- ▶ Odd
- ▶ Mark
- ▶ Space

Default for parity bit is None

4.2.2.5 Stop Bits

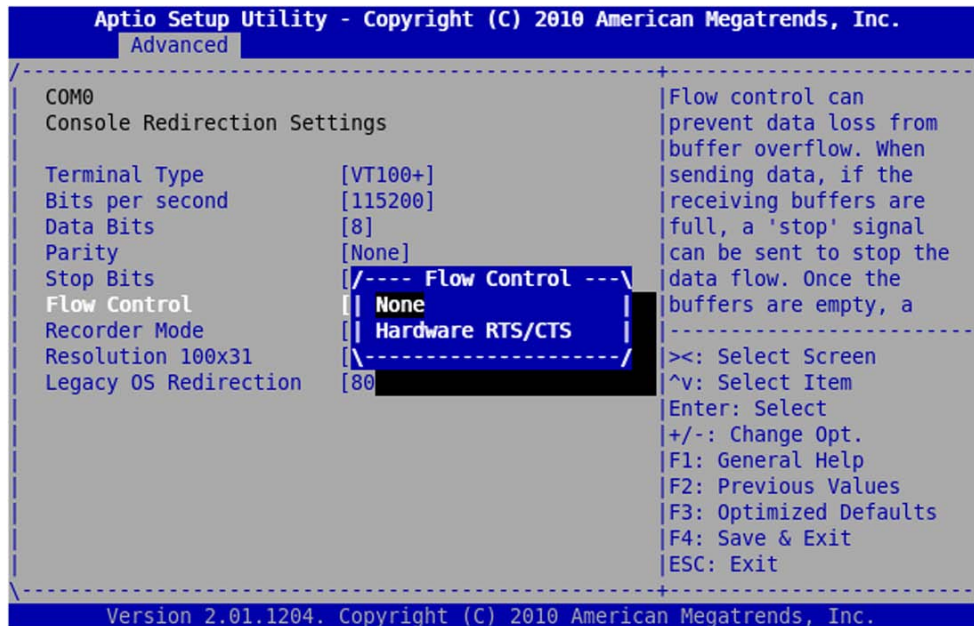


Set Parity bit

- ▶ 1
- ▶ 2

Default for stop bit is 1

4.2.2.6 Flow Control

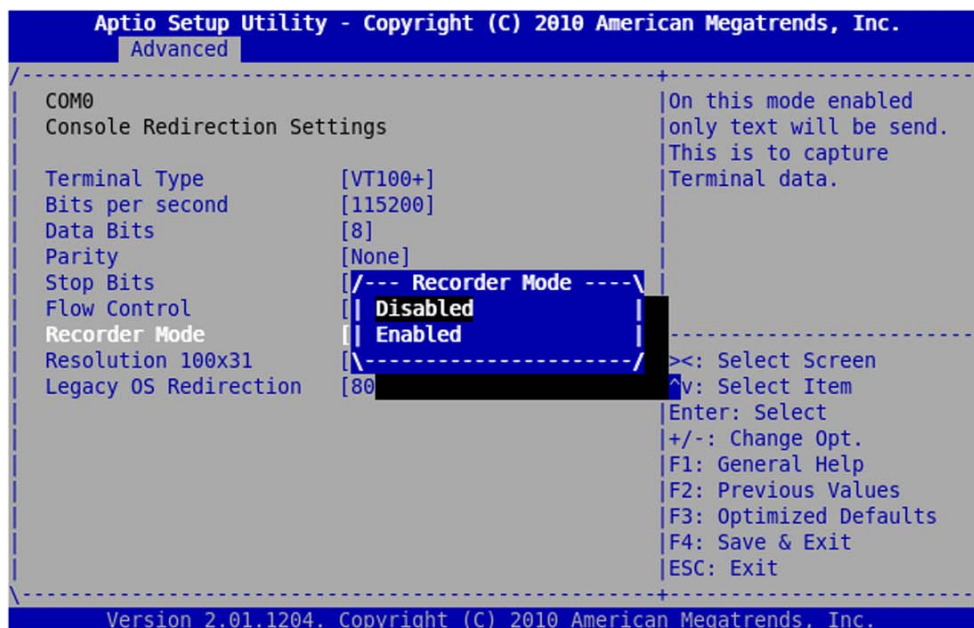


Set Flow Control or modem signals

- ▶ None
- ▶ Hardware RTS/CTS

Default for Flow Control setting is None

4.2.2.7 Recorder Mode



Set Recorder Mode. On this mode only text will be sent on the line. This allows to capture terminal data.

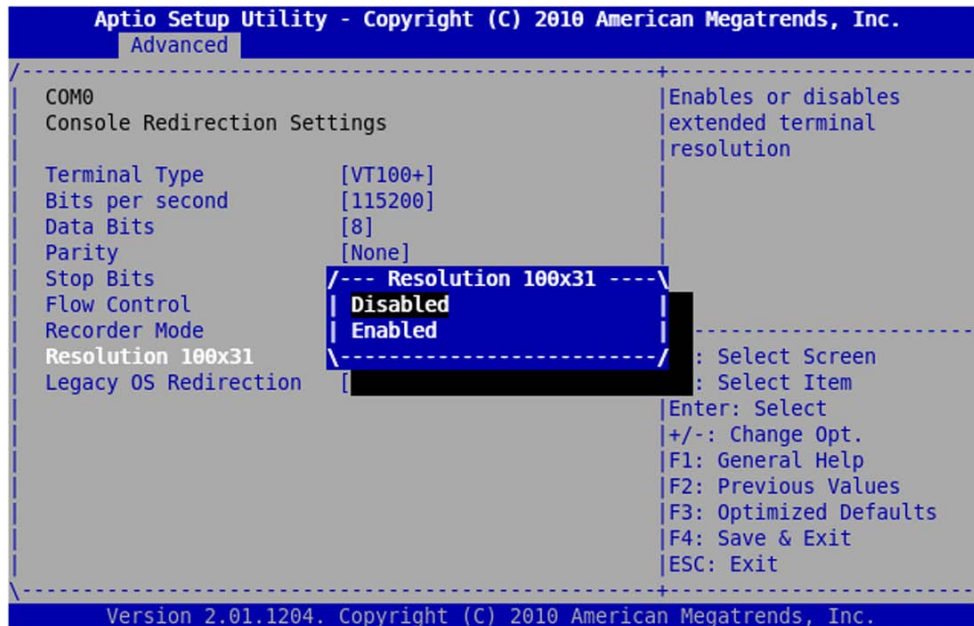
- ▶ Disabled
- ▶ Enabled

Default is Disabled



When this option is enabled it could be very delicate to control the SETUP menu from the serial line. In case of difficulty graphical interface could be used to control SETUP menu.

4.2.2.8 Resolution

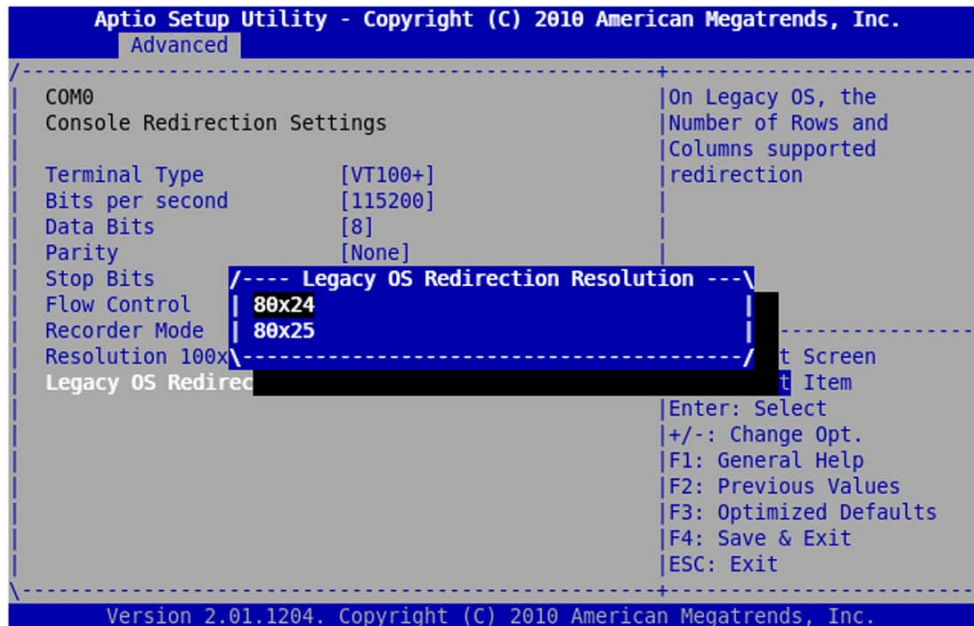


Set Resolution. This enable or disable the extended Terminal Resolution

- ▶ Disabled
- ▶ Enabled

Default is Disabled

4.2.2.9 Legacy OS Redirection



On Legacy OS configure supported number of Rows and Columns.

- ▶ 80x24
- ▶ 80x25

Default is 80x24 for resolution

Chapter 5 - Kontron Menu

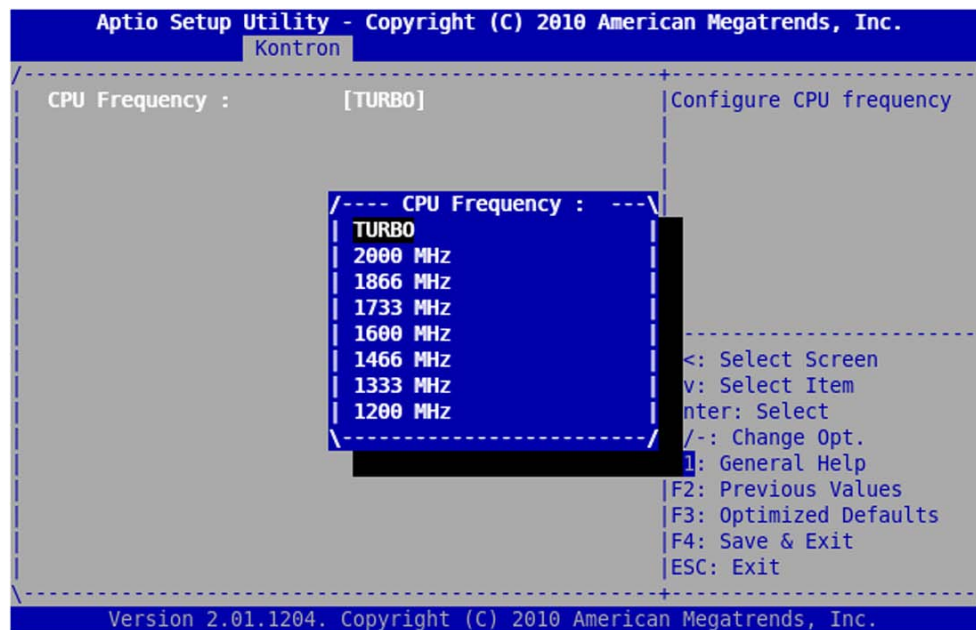
The Kontron Menu provides system-level controls to configure specific VX3030 hardware design.

The different parameters are described in following sections:

- ▶ CPU Configuration - Section 5.1 page 23
- ▶ Ethernet Front Panel Configuration - Section 5.2 page 24
- ▶ PCI Configuration - Section 5.3 page 25
- ▶ USB Misc Configuration - Section 5.4 page 27
- ▶ VPD – VITAL PRODUCT DATA - Section 5.5 page 28
- ▶ UUID Configuration - Section 5.6 page 29
- ▶ VPX Configuration - Section 5.7 page 30
- ▶ ALARM Configuration - Section 5.8 page 35
- ▶ Serial Configuration - Section 5.9 page 36
- ▶ Board Misc Configuration - Section 5.10 page 37
- ▶ SPD Configuration - Section 5.11 page 38

```
Aptio Setup Utility - Copyright (C) 2010 American Megatrends, Inc.
Main Advanced Kontron Chipset Boot Security
-----
| Kontron Specific configuration menu | Configure CPU specific
|                                     | features
|> CPU Configuration                |
|> Ethernet Front Panel Configuration |
|> PCI Configuration                 |
|> USB Misc Configuration            |
|> UUID Configuration                |
|> VPD (Vital Product Data)          |
|> VPX Configuration                 |
|> ALARM Configuration               |
|> Serial Configuration              |>: Select Screen
|> Board Misc Configuration          |^v: Select Item
|> SPD Configuration                 |Enter: Select
|                                     |+/-: Change Opt.
|                                     |F1: General Help
|                                     |F2: Previous Values
|                                     |F3: Optimized Defaults
|                                     |F4: Save & Exit
|                                     |ESC: Exit
-----
Version 2.01.1204. Copyright (C) 2010 American Megatrends, Inc.
```

5.1 CPU Configuration

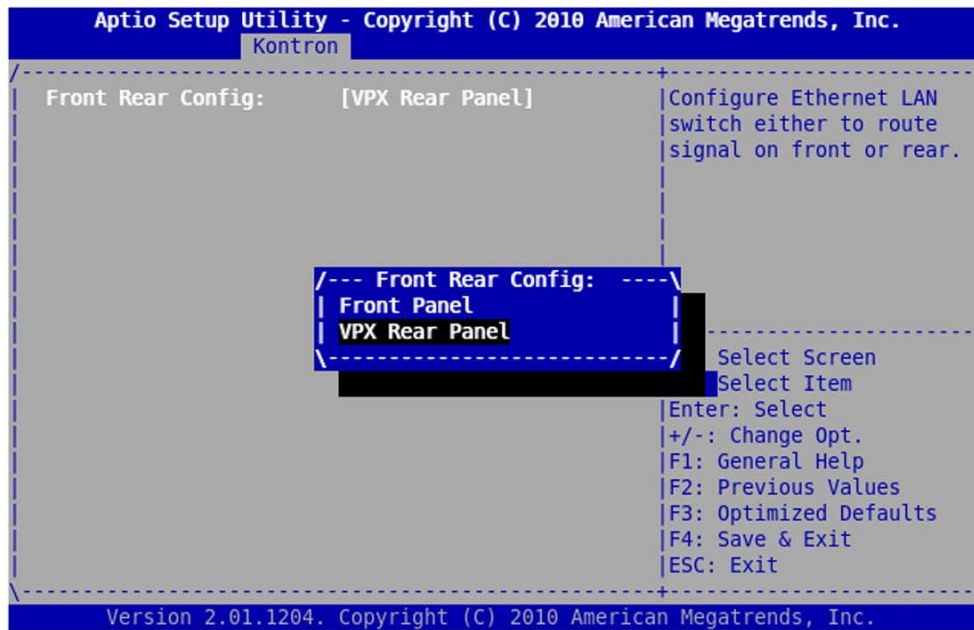


Set the CPU configuration. This option allows to configure the CPU frequency mode. The TURBO mode allows the CPU to boost its frequency between 2 and 3 GHz according to the CPU load and temperature. Other mode will force the CPU frequency to the indicated value.

- ▶ TURBO
- ▶ 2000 MHz
- ▶ 1866 MHz
- ▶ 1733 MHz
- ▶ 1600 MHz
- ▶ 1466 MHz
- ▶ 1333 MHz
- ▶ 1200 MHz

Default is TURBO

5.2 Ethernet Front Panel Configuration



Set LAN switch routing:

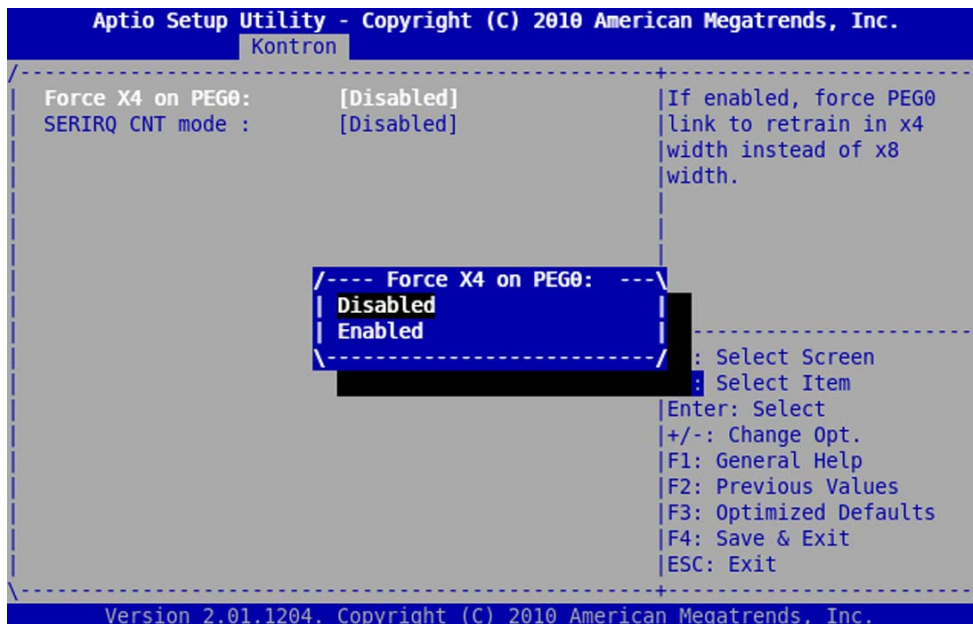
- ▶ Front Panel
- ▶ VPX Rear Panel

Default is Front Panel

This menu allows user to change LAN Ethernet Switch to route signal either on front panel or VPX Rear Panel using RTM (Rear Transition Module).

5.3 PCI Configuration

5.3.1 PCI-Express PEG0 Link Configuration



Force x4 on PEG0

- ▶ Disabled
- ▶ Enabled

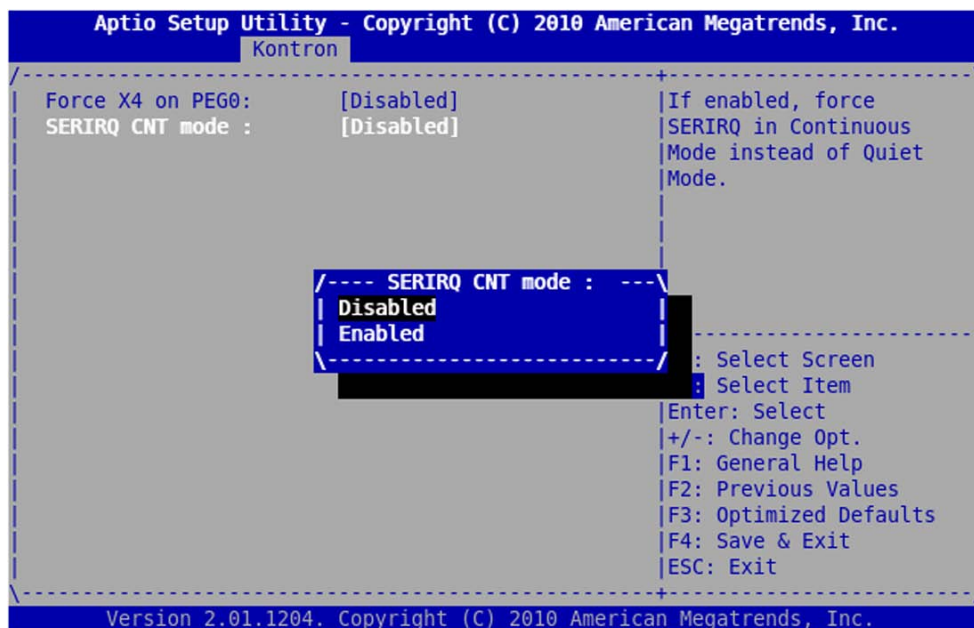
Default is Disabled

This setting allows to force the PCI express link to PMC/XMC bus to x4. By default (disabled) this link size is x8. This option can be used to support specific XMC device.



To take into account this feature, user should have to set this setting before using the XMC and should have to save changes before exiting Setup; then, plug the XMC device and power-up the board with the XMC and the correct setting.

5.3.2 LPC Serial IRQ Configuration



The serial IRQ protocol has two modes of operation which affect the start frame of the LPC interface in the PCH. These two modes are:

- ▶ Continuous, where the PCH is solely responsible for generating the start frame; and
- ▶ Quiet, where a serial IRQ peripheral is responsible for beginning the start frame.

The parameter "SERIRQ CNT mode" allows to select Continuous mode or Quiet mode:

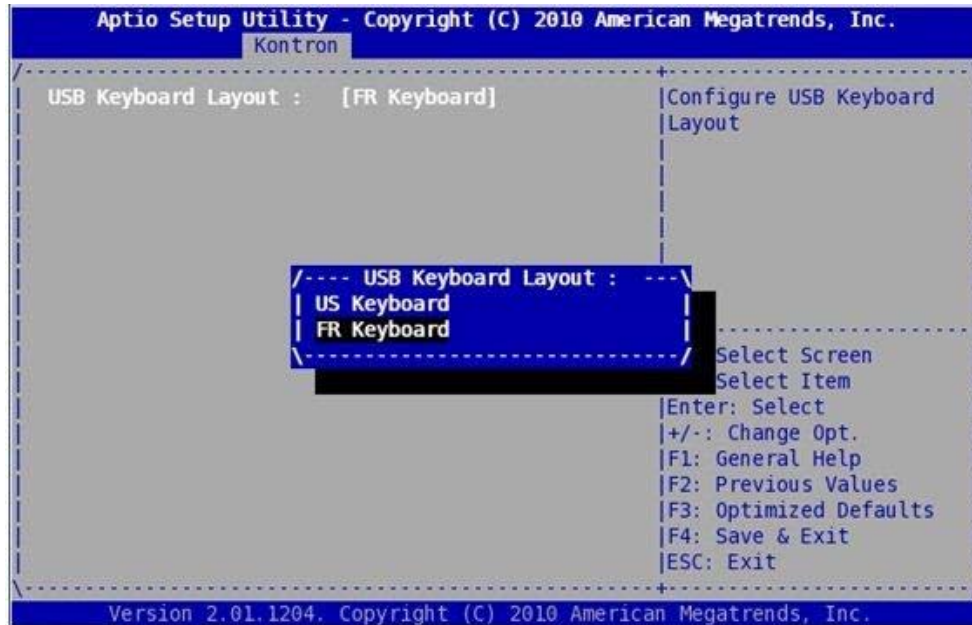
- ▶ if set to Enabled (Default), Continuous mode is selected and allows faster operation;
- ▶ if set to Disabled, Quiet mode is selected and allows less power consumption.



OS like VxWorks do not support the Quiet Mode for polling interrupts (see Item # 4 - CRP 4020 page 109)

5.4 USB Misc Configuration

The following option is displayed :



Set the USB Keyboard Layout:

- ▶ US Keyboard
- ▶ FR Keyboard

Default is US Keyboard.

This option allows to set the type of USB keyboard used, Qwerty or Azerty.



As only the English language is supported under BIOS, then accented characters are not managed. Moreover, the characters ° £ ¤ μ and § are not displayed either.

5.5 VPD – VITAL PRODUCT DATA

```
Aptio Setup Utility - Copyright (C) 2010 American Megatrends, Inc.
Kontron
-----
Order Code   :      VX3030-SA22-01000
EC Level     :      01000
Serial Number :      1110431010001
Variant      :      0010042010020001
Checksum     :      021a1ef9

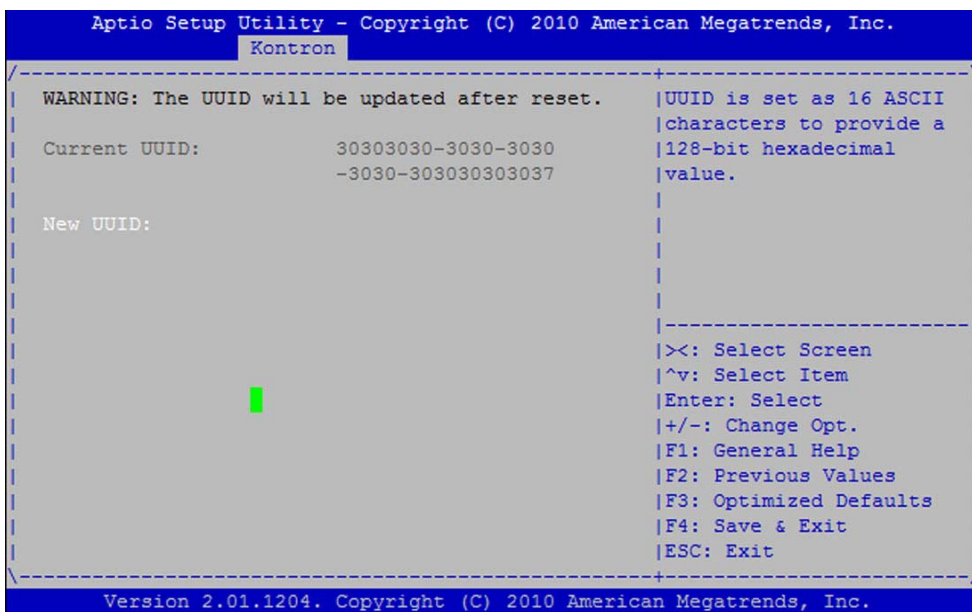
                                     ><: Select Screen
                                     ^v: Select Item
                                     Enter: Select
                                     +/-: Change Opt.
                                     F1: General Help
                                     F2: Previous Values
                                     F3: Optimized Defaults
                                     F4: Save & Exit
                                     ESC: Exit

-----
Version 2.01.1204. Copyright (C) 2010 American Megatrends, Inc.
```

This menu only displays the Vital Product Data (VPD) information for VX3030. VPD are stored in VX3030 EEPROM.

- ▶ **Order Code:** Ordering code defining the type of Board
- ▶ **EC Level:** Engineering Change Level, gives the hardware level identification
- ▶ **Serial Number:** Board Serial Number
- ▶ **Variant:** A define coding the exact hardware configuration
- ▶ **Checksum:** Checksum value of VPD area

5.6 UUID Configuration



UUID stands for Universally Unique Identifier also known as GUIDs (Globally Unique Identifier). A UUID is 128 bits long, and can guarantee uniqueness across space and time. Please refer to RFC4122 documentation for more details about UUID.

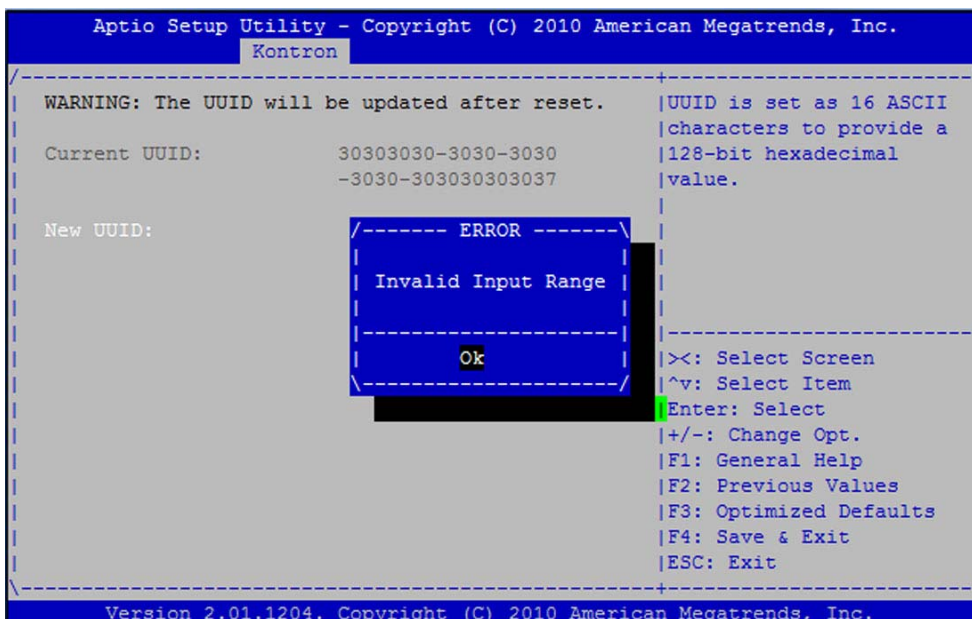
The BIOS provides UUID to fill SMBIOS table and for PXE protocol. Default value of the UUID is set as an ASCII number equal to the Geographical Address of the board on the backplane.

This submenu provides ability to user to modify the default value of the UUID (see picture above).



Once the UUID is modified, it must be equal to **exactly sixteen** ASCII characters. If not, an Error pop-up message appears on the screen (see picture below).

To cancel entering of a new UUID, type ESC key then enter key to close the pop-up message.



5.7 VPX Configuration

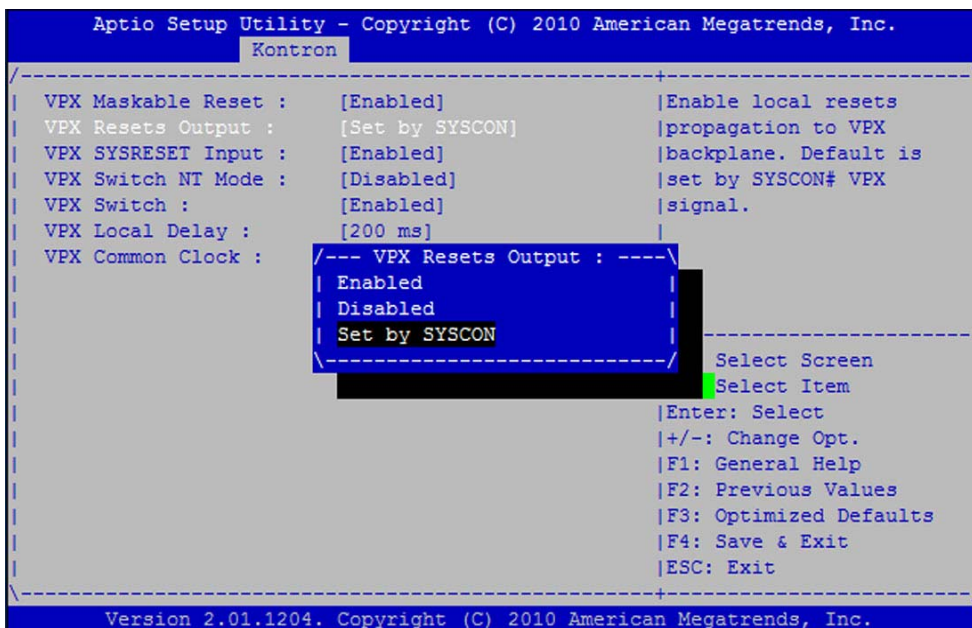
```
Aptio Setup Utility - Copyright (C) 2010 American Megatrends, Inc.
Kontron
-----+-----
| VPX Maskable Reset : [Enabled] | Propagation of VPX
| VPX Resets Output : [Set by SYSCON] | Maskable Reset to Local
| VPX SYSRESET Input : [Enabled] | Reset or GPIO2 use if
| VPX Switch NT Mode : [Disabled] | set to disabled.
| VPX Switch : [Enabled] | Default is VPX Maskable
| VPX Local Delay : [200 ms] | reset propagated to
| VPX Common Clock : [No clock] | Local Reset.
|
|
|>: Select Screen
|^v: Select Item
|Enter: Select
|+/-: Change Opt.
|F1: General Help
|F2: Previous Values
|F3: Optimized Defaults
|F4: Save & Exit
|ESC: Exit
-----+-----
Version 2.01.1204. Copyright (C) 2010 American Megatrends, Inc.
```

5.7.1 VPX Maskable Reset

```
Aptio Setup Utility - Copyright (C) 2010 American Megatrends, Inc.
Kontron
-----+-----
| VPX Maskable Reset : [Enabled] | Propagation of VPX
| VPX Resets Output : [Set by SYSCON] | Maskable Reset to Local
| VPX SYSRESET Input : [Enabled] | Reset or GPIO2 use if
| VPX Switch NT Mode : [Disabled] | set to disabled.
| VPX Switch : [Enabled] | Default is VPX Maskable
| VPX Local Delay : [200 ms] | reset propagated to
| VPX Common Clock : [No clock] | Local Reset.
|
| /--- VPX Maskable Reset : ---\
| Enabled
| Disabled
|
|-----+-----| Select Screen
|
|-----+-----| Select Item
|Enter: Select
|+/-: Change Opt.
|F1: General Help
|F2: Previous Values
|F3: Optimized Defaults
|F4: Save & Exit
|ESC: Exit
-----+-----
Version 2.01.1204. Copyright (C) 2010 American Megatrends, Inc.
```

The VPX Maskable Reset parameter allows to propagate the VPX maskable reset signal to the local reset of the board if set to Enabled, which is the default behaviour. However, if set to Disabled, this signal is used as GPIO.

5.7.2 VPX Reset Propagation to VPX Backplane



The VPX Resets Output parameter allows to propagate the local resets of the board to the VPX backplane disregarding the state of the VPX SYSCON# signal.

Default is "Set by SYSCON": in this case, the board will propagate its local reset to VPX SYSRESET only when it is System Controller (SYSCON).

If set to Enabled, the VPX board, independently of its slot, will propagate its local resets to the VPX SYSRESET# signal on VPX backplane.

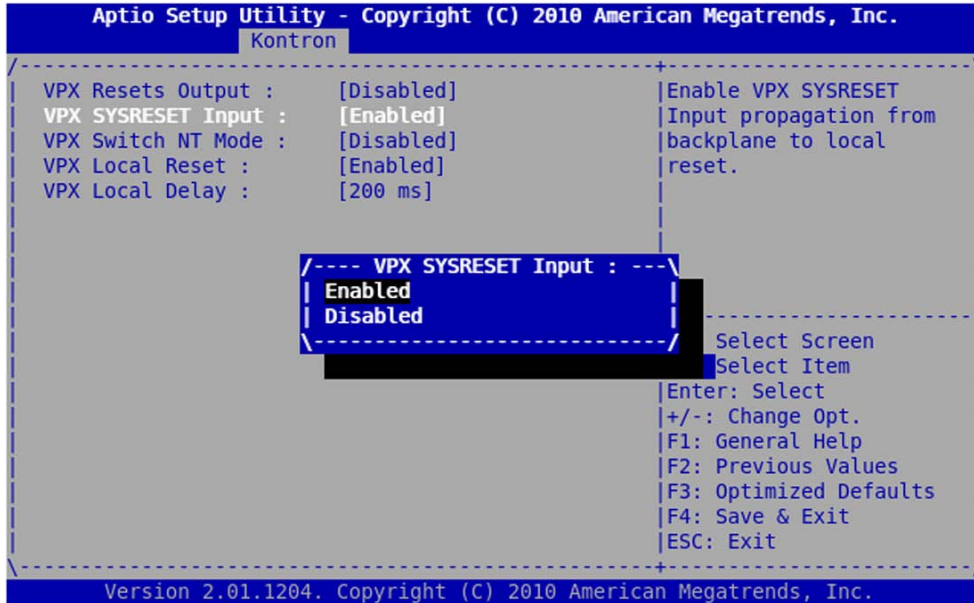
If set to Disabled, local resets are NOT propagated to VPX SYSRESET# signal on VPX backplane.



Caution must be taken using this parameter in a multi-boards system because ALL boards plugged on VPX backplane can be affected by the VPX SYSRESET# signal.

This parameter can be used in conjunction with the parameter VPX SYSRESET Input.

5.7.3 VPX SYSRESET Input

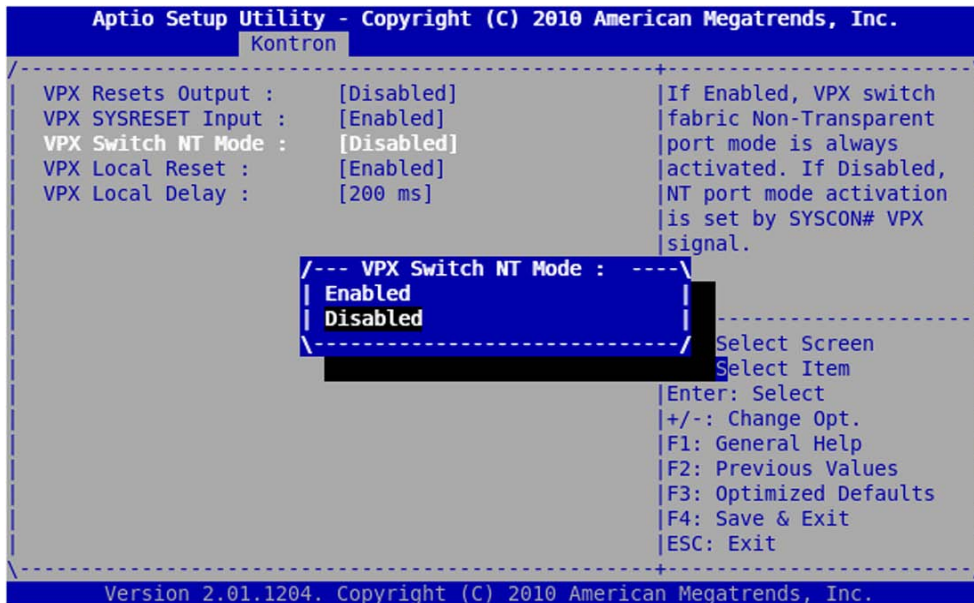


The VPX SYSRESET Input parameter allows to propagate or not the VPX SYSRESET# signal from the VPX backplane to the board.

If this parameter is set to Disabled, VPX backplane reset has no effect on the board.

In a multi-boards configuration system, this parameter can be used in conjunction with the VPX Resets Output parameter.

5.7.4 VPX Switch NT Mode

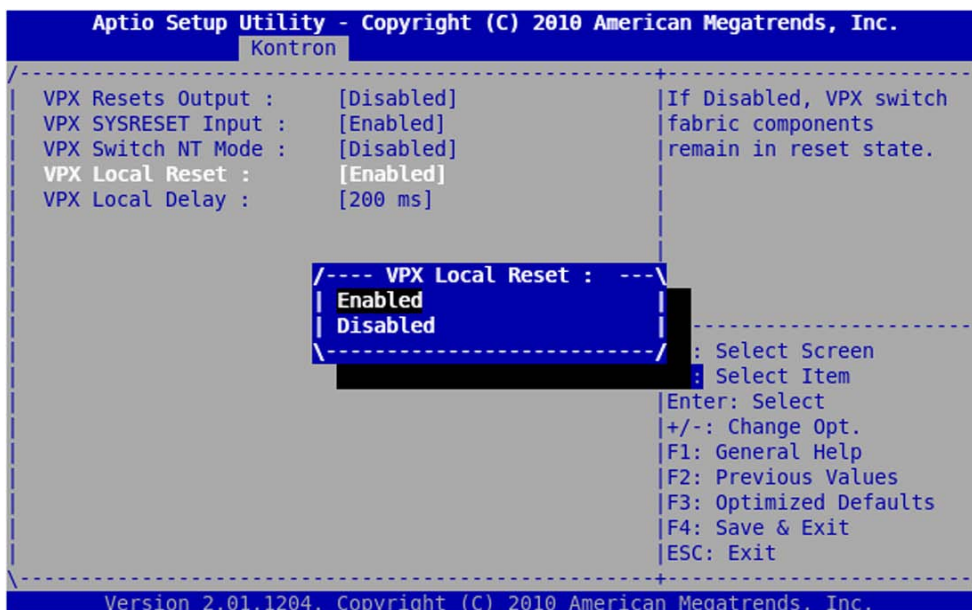


The VPX Switch NT mode allows to set the VPX switch fabric devices in NT (Non-Transparent) mode disregarding the state of the VPX SYSCON# signal.

Default is that VPX system controller board uses Transparent mode for VPX switch fabric devices; in this case, the EEPROM device connected to VPX switch devices is not accessible from BIOS.

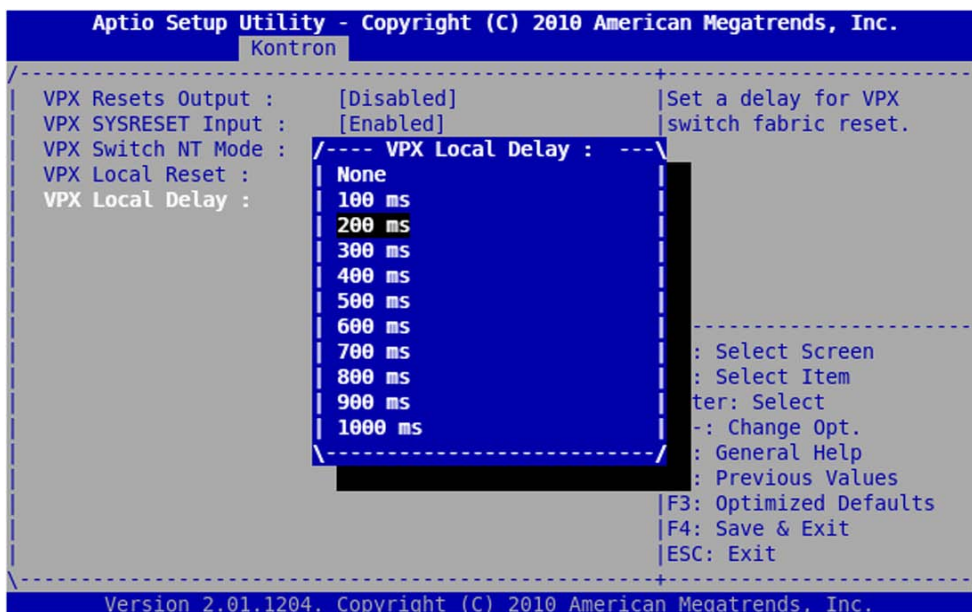
Enabling this parameter allows BIOS to access to the EEPROM device even if the board is system controller on a VPX multi-boards system.

5.7.5 VPX Local Reset



The VPX Local Reset parameter allows VPX switch fabric devices to be enabled for VPX fabric connection. If this parameter is set to Disabled, no VPX fabric connections are possible and the board will not appear in VPX discovery mechanism under OS.

5.7.6 VPX Board Delay



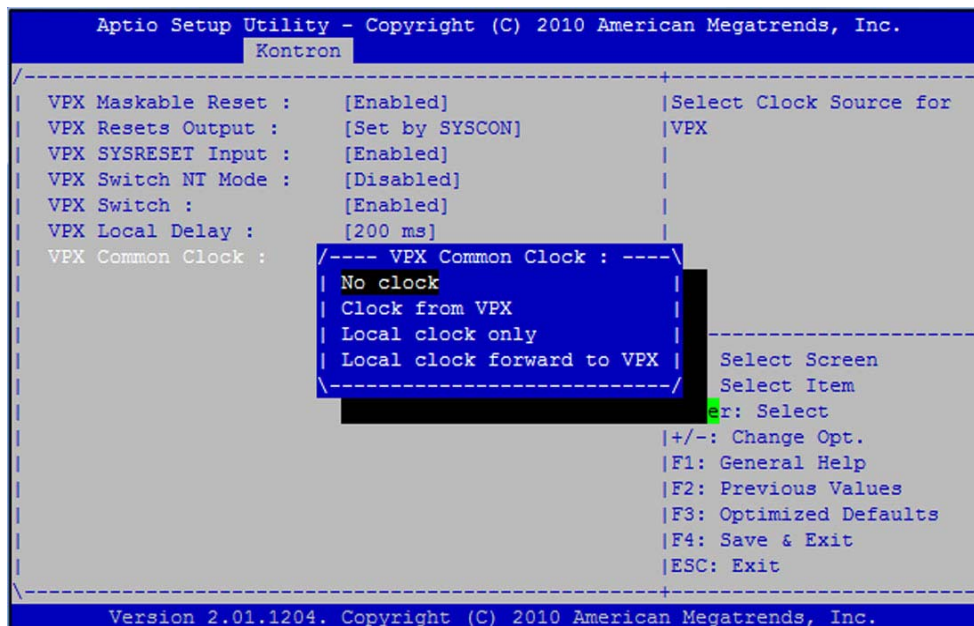
Set VPX Board delay

- ▶ Value are: none, 100 ms, 200 ms, ..., 1000 ms

Default is 200 ms.

This value should be tuned to delay the PCI-Express reset for VPX fabric discovery during boot process.

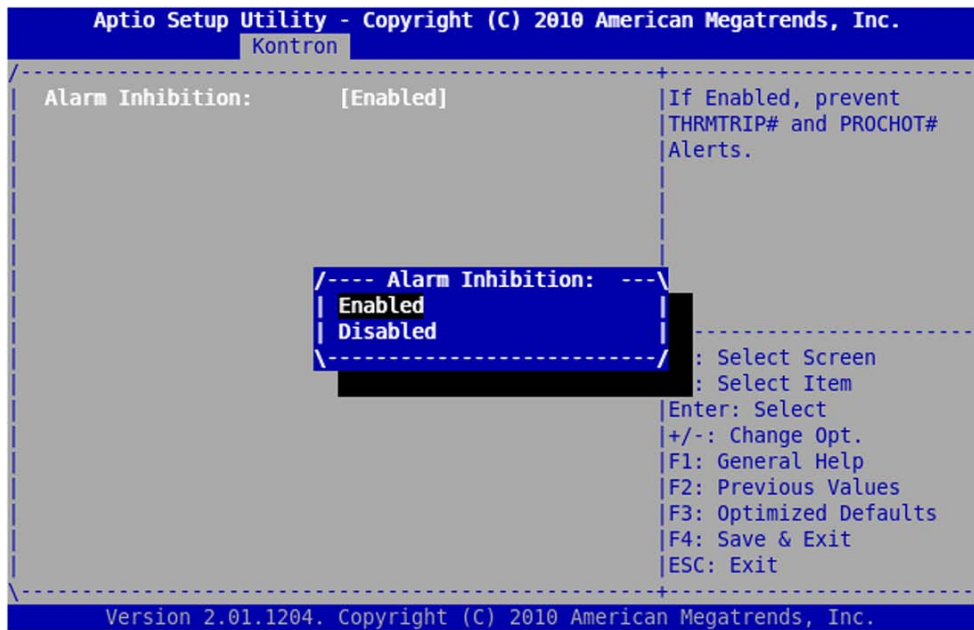
5.7.7 VPX Common Clock



The VPX common clock is a new feature to allow VPX PCIe common clock management (signal PCIe_CLK+/-).

- ▶ No clock (default): no clock generated nor received
- ▶ Clock from VPX: clock received from VPX
- ▶ Local clock only: clock on board
- ▶ Local clock forward to VPX: clock generated to VPX

5.8 ALARM Configuration



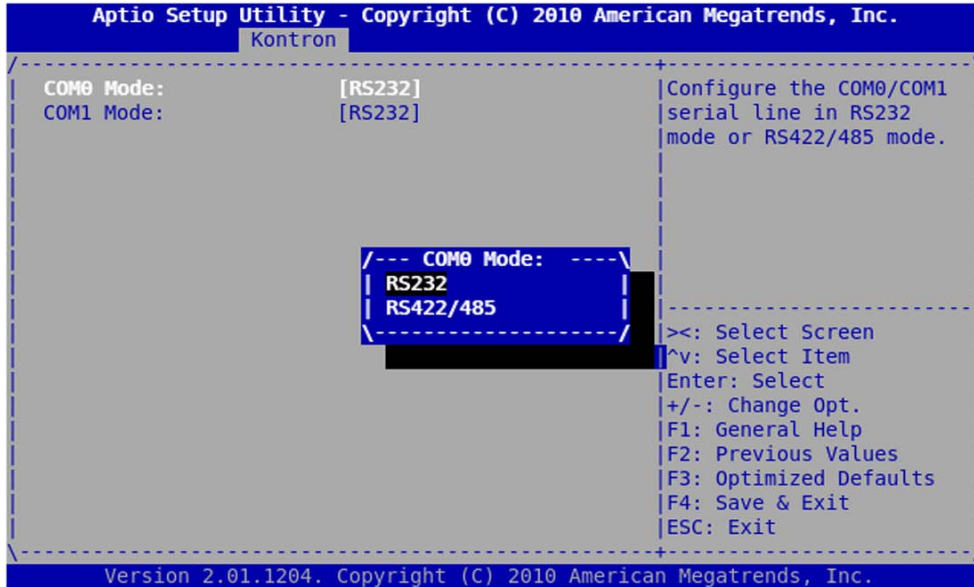
This menu allows user to prevent cPLD logic to turn off automatically the system in case of assertion of THRMTRIP# or PROCHOT# alerts.



It is strongly recommended not to disable this parameter for normal use. This parameter must be used with caution.

5.9 Serial Configuration

5.9.1 COM0 Mode

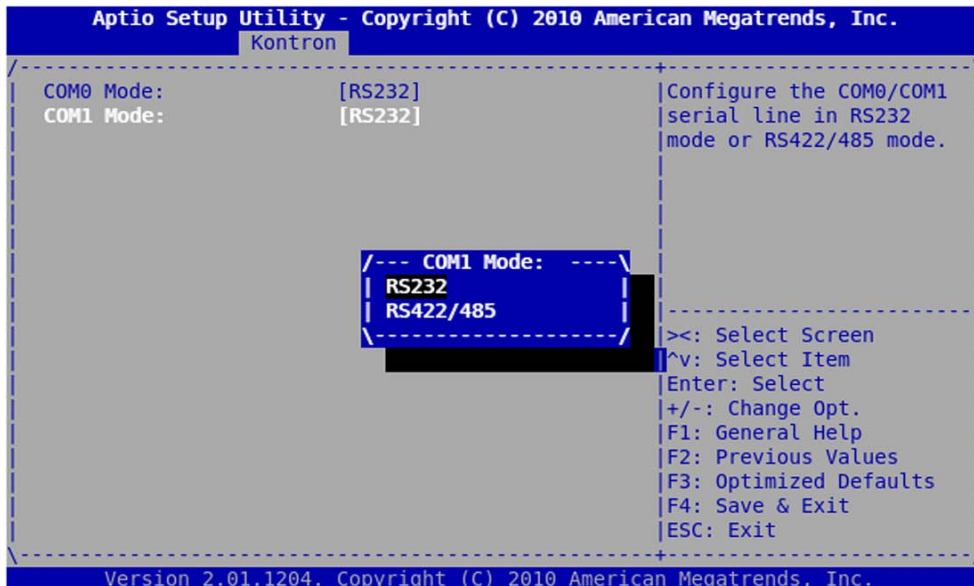


This menu allows user to select the mode for the COM0 serial port: the supported mode are RS232 and RS422/485.



User must turn off the system to have the new Serial configuration taken into account.

5.9.2 COM1 Mode

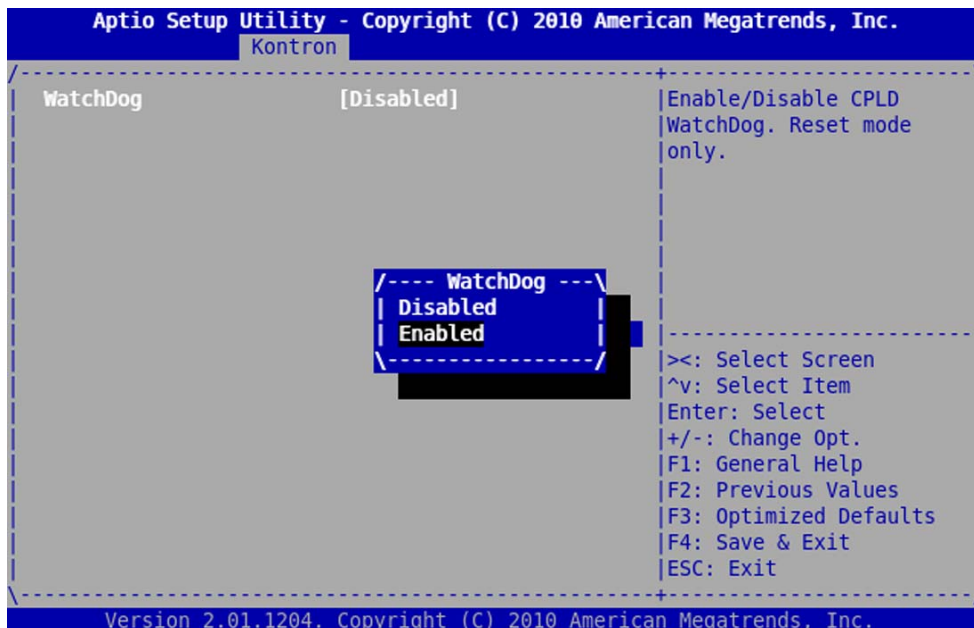


This menu allows user to select the mode for the COM1 serial port: the supported mode are RS232 and RS422/485.



User must turn off the system to have the new Serial configuration taken into account.

5.10 Board Misc Configuration



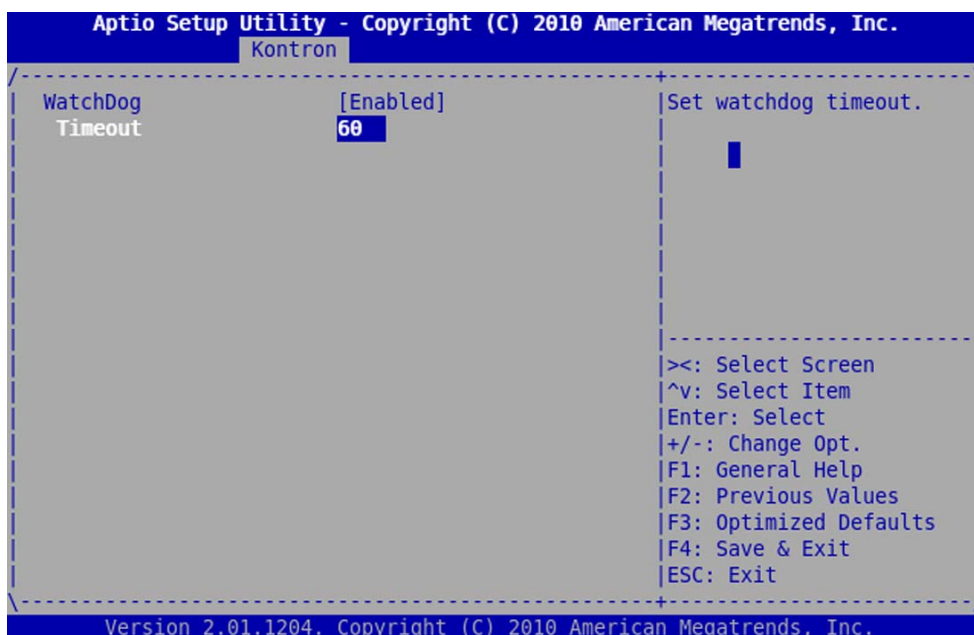
The WatchDog option allows to disable (default setting) or enable the CPLD Watchdog Timer and to define the timeout value.

If Enabled, the timer will be started at device boot time.

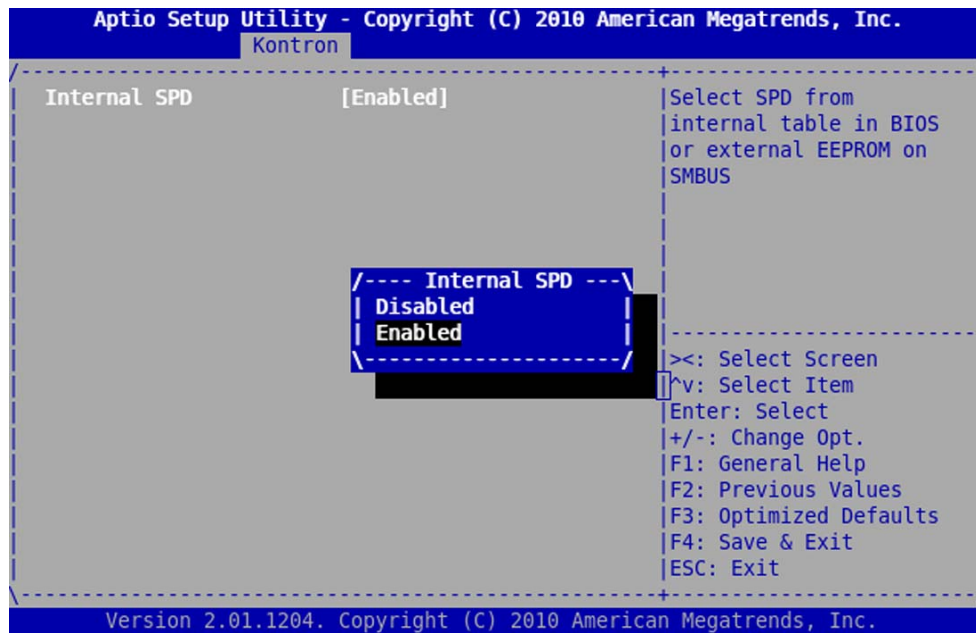
Only the Reset mode is handled.



The WatchDog setting is kept even after a timeout has occurred.



5.11 SPD Configuration

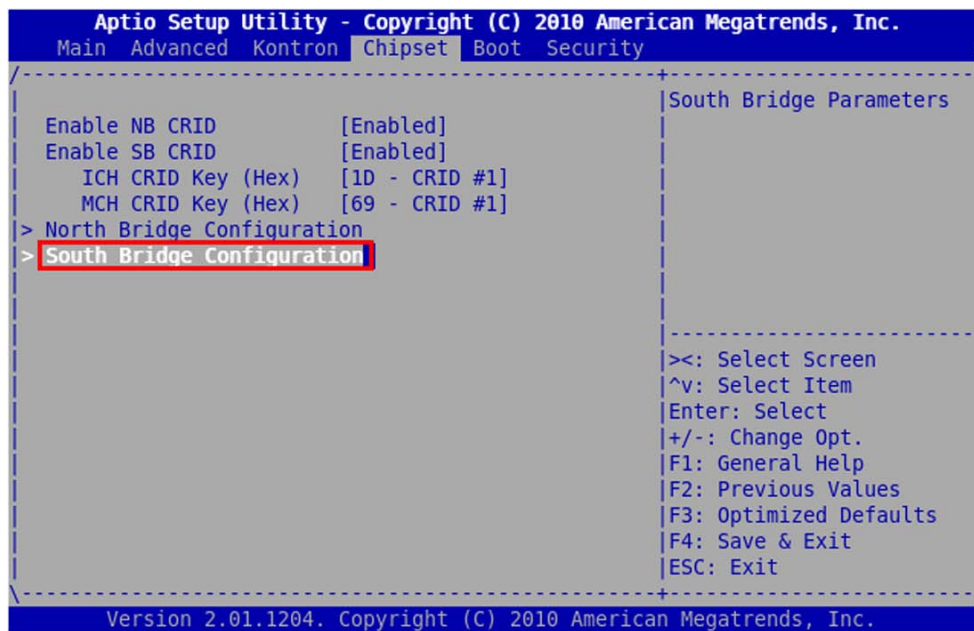


The Internal SPD item allows user to select either SPD from internal tables in BIOS or from EEPROM reading on PCH SMBus.

The internal tables in BIOS are based on Hardware Configuration and VPD (Vital Product Data).

This feature allows user to bypass SMBus access on PCH in order to speed up and secure the boot process in case of reset during I2C EEPROM reads or writes.

Chapter 6 - Chipset Menu



The Chipset Menu provides system-level controls to configure device settings:

- ▶ South Bridge Configuration Section 6.1 page 40

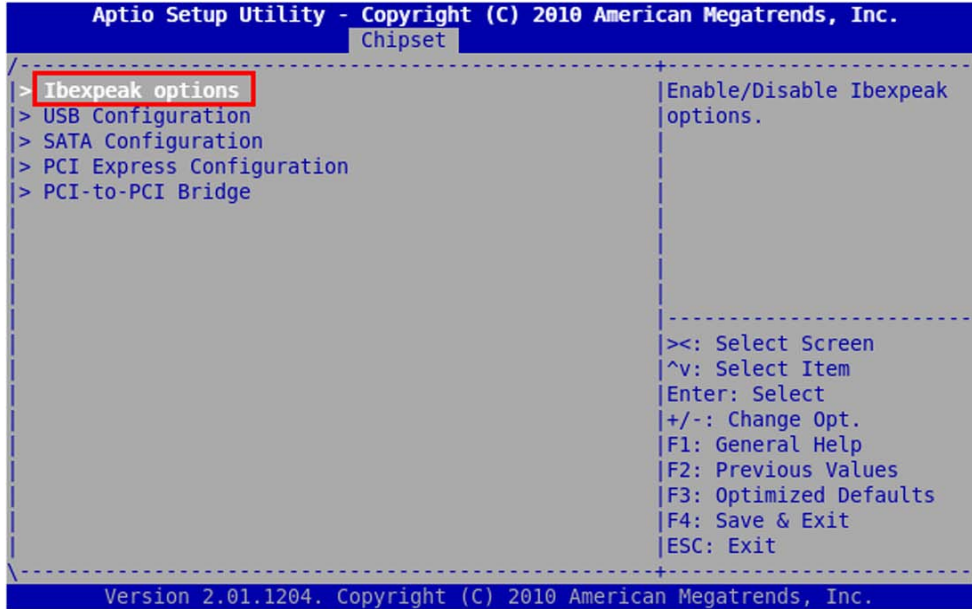
In particular South Bridge menu will be used to enable the Pre-boot Execution Environment (PXE) ROM

Other following submenus are Reserved and Not to be used !

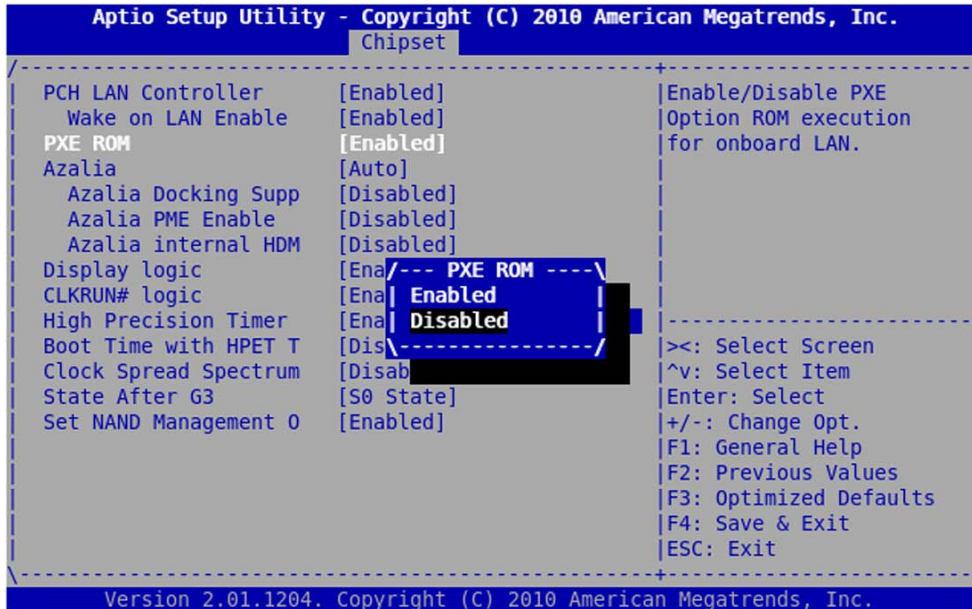
- ▶ Enable CRID
- ▶ North Bridge Configuration

6.1 South Bridge & PXE ROM configuration

To reach PXE ROM setting, select South Bridge Configuration setting in Chipset menu then select Ibexpeak Options.



Then select PXE ROM. This option allows to enable/disable the PXE ROM. Other settings are reserved and not to be used.



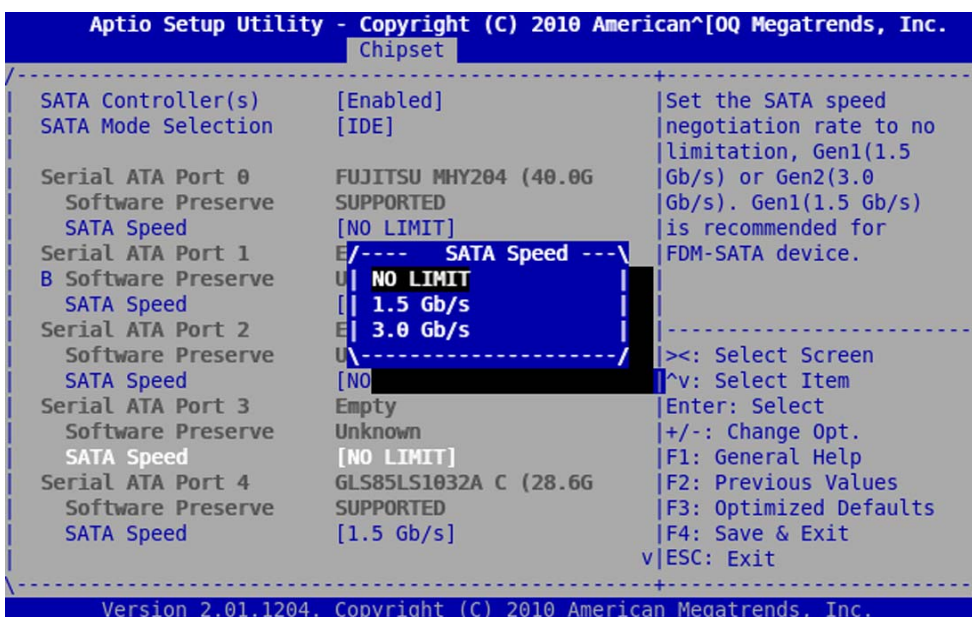
Set PXE ROM

- ▶ Disabled
- ▶ Enabled

Default is Disabled

6.2 South Bridge & SATA Configuration

To manage the SATA configuration select the sub-menus South Bridge Configuration and then SATA Configuration.



By default, the SATA controllers are enabled and the SATA mode is IDE. No speed limitation is selected.



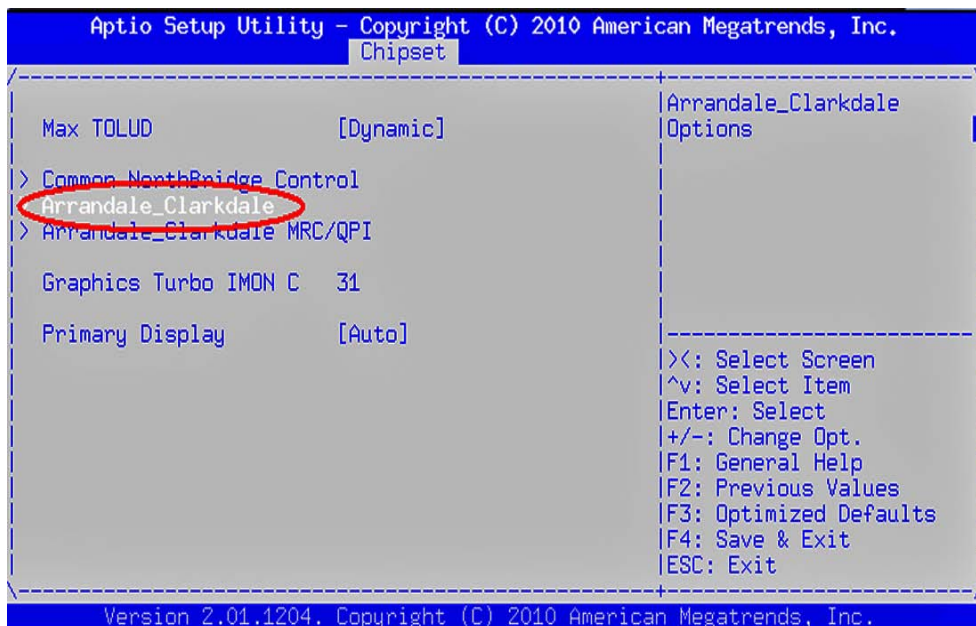
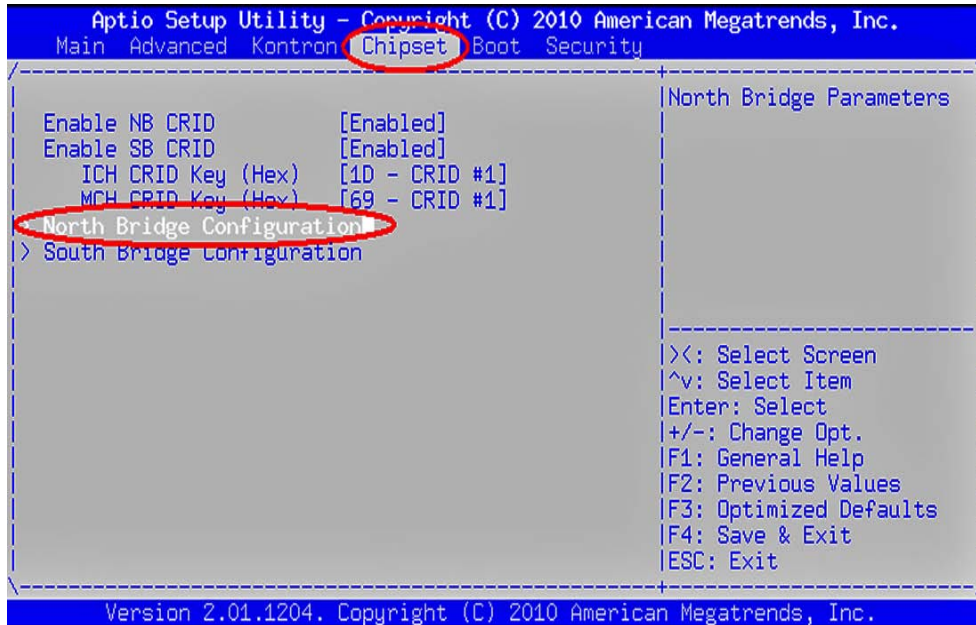
- ▶ The SATA speed port #4 for FDM-SATA is set to GEN1 (1.5 GT/s) by default in setup.
- ▶ In AHCI mode, usually the operating system re-negotiate the SATA speed based on the capabilities registers. It is possible to force the SATA speed by using the libata.force option at the kernel command line to boot Linux.

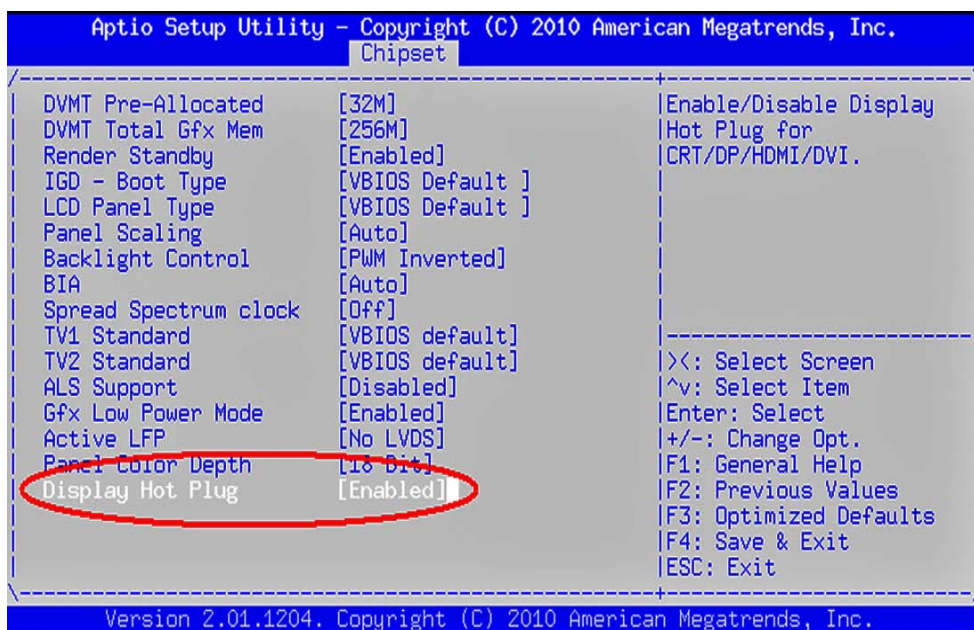
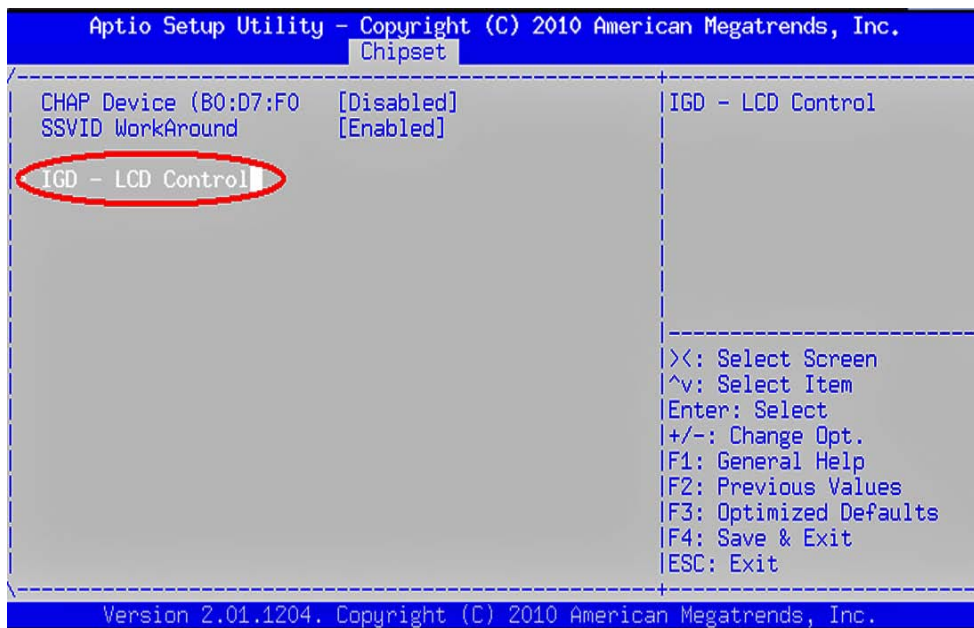


The AHCI mode is mandatory to boot Linux for some new devices like SSD SATA Flash FDM-SATA-8GB. See Item # 5 - CRP 4028 page 109.

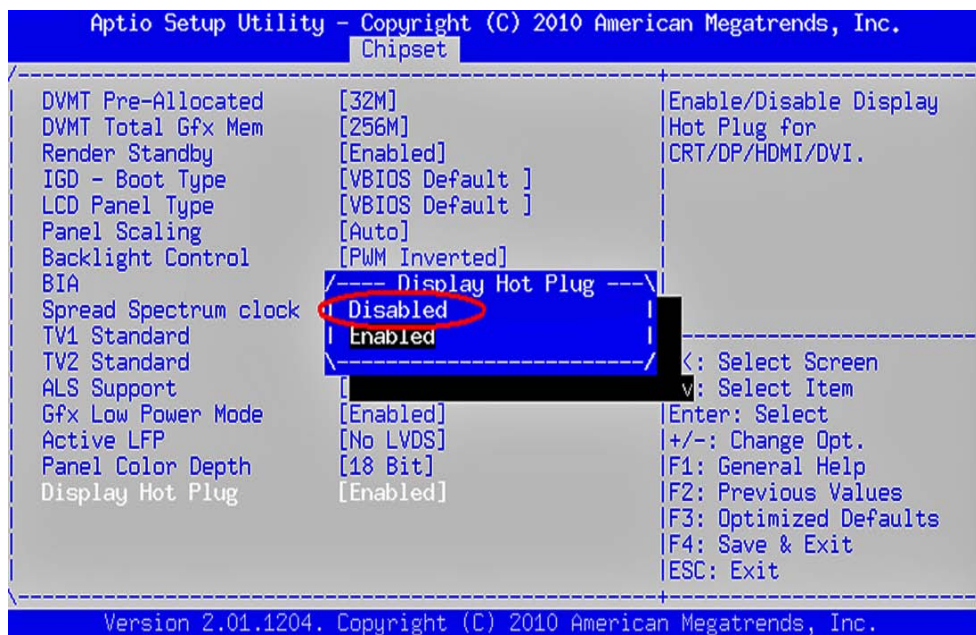
6.3 North Bridge & Display Hot Plug configuration

To manage display hot plug (for fixing CRP #4072), a new menu has been added in North Bridge Configuration
 -> Arrandale_Clarkdale -> IGD - LCD Control -> Display Hot Plug

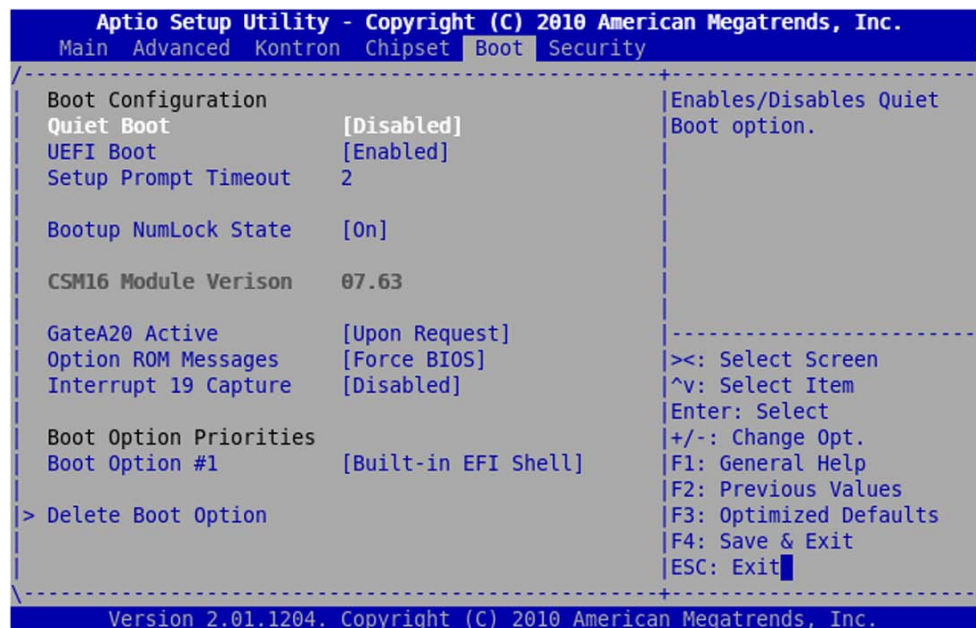




To fix CRP #4072, we have to disable display hot plug in order to not generate IRQ that causes USB 2.0 unworkable as shown in following picture:



Chapter 7 - Boot Menu



The Boot Menu allows user to configure the boot mode and to select the boot sequence of the available boot devices. Possible Boot settings are:

- ▶ Quiet boot: Section 7.1 page 46
- ▶ UEFI boot: Section 7.2 page 46
- ▶ Setup prompt timeout: Section 7.3 page 46
- ▶ Bootup NumLock State: Section 7.4 page 46
- ▶ Boot Option Priorities: Section 7.5 page 47
- ▶ Network Device BBS Priorities: Section 7.6 page 48
- ▶ Hard Drive BBS Priorities: Section 7.7 page 50
- ▶ Delete Boot Option: Section 7.8 page 51

Other following submenus are Reserved and Not to be used !

- ▶ GateA20 Active
- ▶ Option ROM Messages
- ▶ Interrupt 19 Capture
- ▶ Add New Boot Option



The VX3030 boot time is about 5 seconds after a reset and 8 seconds after a power on boot.

7.1 Quiet boot

Quiet Boot setting when enabled allows to hide BIOS boot message such as:

Version 2.00.1204. Copyright (C) 2010 American Megatrends, Inc.

Press or <F2> to enter setup. Press <F7> for BBS POPUP Menu.

Set Quiet boot

- ▶ Disabled
- ▶ Enabled

Default is Disabled

7.2 UEFI boot

UEFI Boot setting allows to enable or disable UEFI boot from disk

Set UEFI Boot

- ▶ Disabled
- ▶ Enabled

Default is Enabled

7.3 Setup Prompt Timeout

Setup Prompt Timeout menu sets the number of tenth of a second for setup up activation key.

Setup Prompt Timeout

- ▶ Enter the number of tenth of a second. For example 60 for 6 seconds.

7.4 Bootup Numlock State

This menu selects the keyboard numlock state

Set Bootup NumLock State

- ▶ On
- ▶ Off

Default is 0n

7.5 Boot Option Priorities

This menu specifies the boot sequence from the available boot devices. The first device into the list is the primary device that will be boot first. If the boot is rejected (for example unsuccessful PXE boot) then the second device will be used for boot and so on. Here is a example of boot device list:

```

Aptio Setup Utility - Copyright (C) 2010 American Megatrends, Inc.
Main Advanced Kontron Chipset Boot Security
-----
Boot Configuration
Quiet Boot          [Disabled]      ^ Enables/Disables Quiet
UEFI Boot           [Enabled]       * Boot option.
Setup Prompt Timeout 2
Bootup NumLock State [On]
CSM16 Module Verison 07.63
GateA20 Active      [Upon Request]
Option ROM Messages [Force BIOS]
Interrupt 19 Capture [Disabled]
Boot Option Priorities
Boot Option #1      [Built-in EFI Shell] * +/ -: Change Opt.
Boot Option #2      [SATA: WDC WD800JD-...] * F1: General Help
Boot Option #3      [IBA GE Slot 00C8 v...] * F2: Previous Values
Hard Drive BBS Priorities
v ESC: Exit
-----
Version 2.01.1204. Copyright (C) 2010 American Megatrends, Inc.

```

To change the boot device ordering

- ▶ Select a device from the list (Use the <↑> or <↓> to highlight the desired item)
- ▶ Use <+> or <-> control keys to move up/down the selected device item into the list



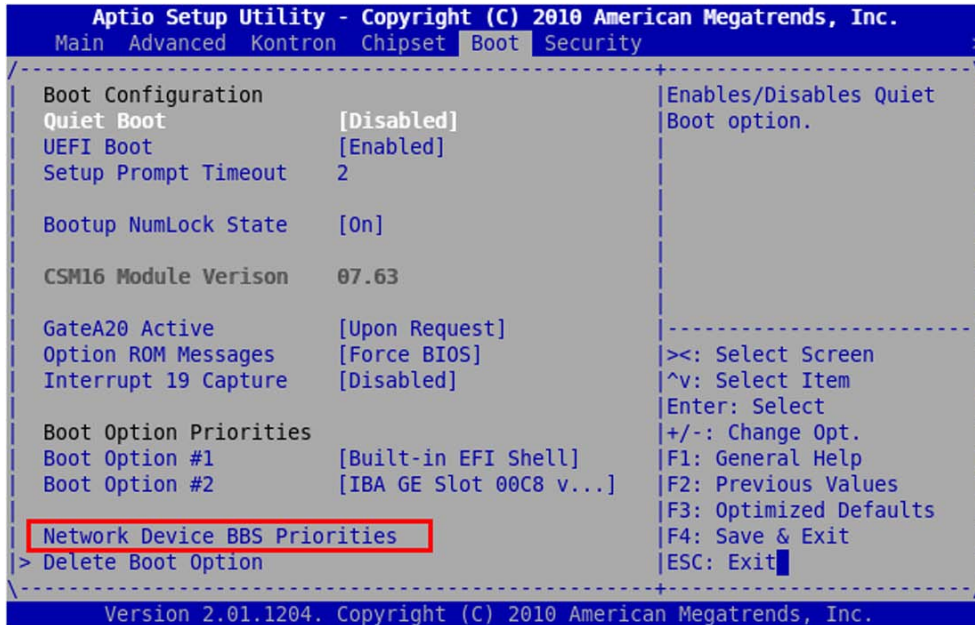
The possible family boot device can be SATA-USB or Gigabyte Ethernet (Gbe). In the boot device item list only one item per family will appear. If more than one device is available for booting (for example 2 SATA disk or 3 Ethernets for PXE) then 2 new submenus can appear below the item list. So it can be:

- ▶ Hard Drive BBS Priorities → This is the submenu for setting a SATA or USB boot order or deleting a SATA & USB boot possibility.
- ▶ Network Device BSS Priorities → This is the submenu for setting a Gbe boot order or deleting a Gbe boot possibility

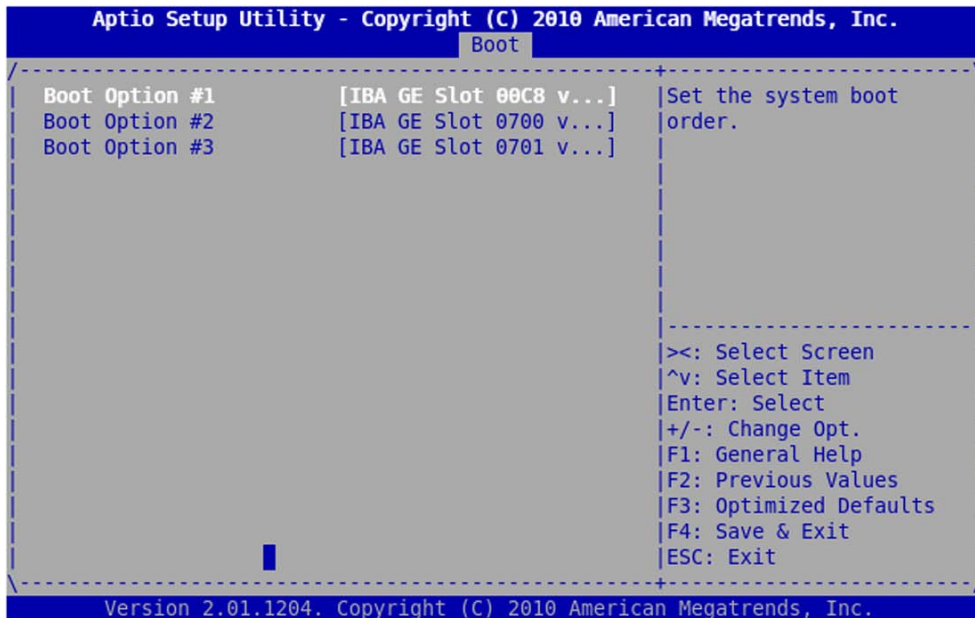
7.6 Network Device BSS Priorities (when PXE ROM Enabled)

The setting allows to configure the Ethernet boot device sequence for PXE.

When PXE ROM has been enabled, Ethernet devices become available for PXE booting (3 Ethernet interfaces). In this case a new submenu is displayed in Boot Setup menu. See image below:



Select this parameter to display available Ethernet Device.



The Network Device "IBA GE Slot 00C8" is related to the Ethernet Interface of the Intel(R) 82577 device.

The Network Devices "IBA GE Slot 0700" and "IBA GE Slot 0701" are related to the Ethernet Interface of the Intel(R) 82580 Dual Port device.



The numeric value in the above example 0700 or 0701 may change depending on the PCI/PCI-Express devices connected to the board.

To change the PXE boot device ordering

- ▶ Select a device from the list (Use the <↑> or <↓> to highlight the desired item)
- ▶ Use <+> or <-> control keys to move up/down the selected device item in the list

To disable one of the PXE boot device

- ▶ Select a device from the list (Use the <↑> or <↓> to highlight the desired item)
- ▶ <Enter> to validate the choice

A new submenu appears (see image) , select Disabled to disable the PXE device

```

Aptio Setup Utility - Copyright (C) 2010 American Megatrends, Inc.
  Boot
-----
Boot Option #1      [IBA GE Slot 00C8 v...]  Set the system boot
Boot Option #2      [IBA GE Slot 0700 v...]  order.
Boot Option #3      [IBA GE Slot 0701 v...]
-----
/---- Boot Option #3 ----\
| IBA GE Slot 00C8 v1353 |
| IBA GE Slot 0700 v1353 |
| IBA GE Slot 0701 v1353 |
| Disabled               |
\-----/
|<: Select Screen
|v: Select Item
|Enter: Select
|+/-: Change Opt.
|F1: General Help
|F2: Previous Values
|F3: Optimized Defaults
|F4: Save & Exit
|ESC: Exit
-----
Version 2.01.1204. Copyright (C) 2010 American Megatrends, Inc.

```



When a PXE boot device is disabled this does not disable the PXE OpROM loading for the concerned boot device. So this following message will appear 3 times in any case when PXE ROM is enabled for South Bridge:

```

      Initializing Intel(R) Boot Agent GE v1.3.53
      PXE 2.1 Build 089 (WfM 2.0)

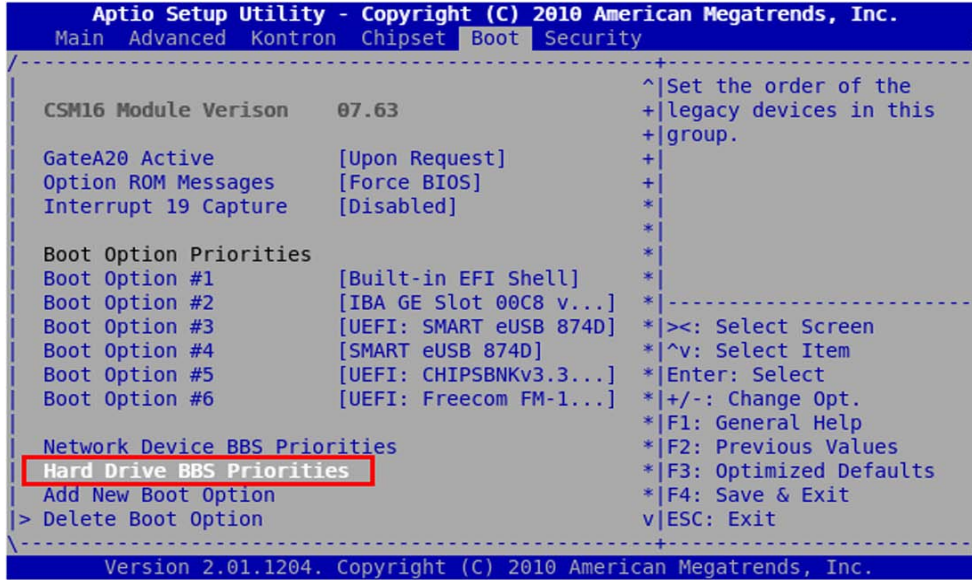
```

Press <Ctrl>+<S> to enter the Setup Menu..

7.7 Hard Drive BBS Priorities

The setting allows to configure the SATA, USB boot device sequence.

This submenu appears when several SATA disk or USB device are present. See image:



Select this menu to see the available SATA & USB boot device and be able to disable it or to reorganize the boot sequence.

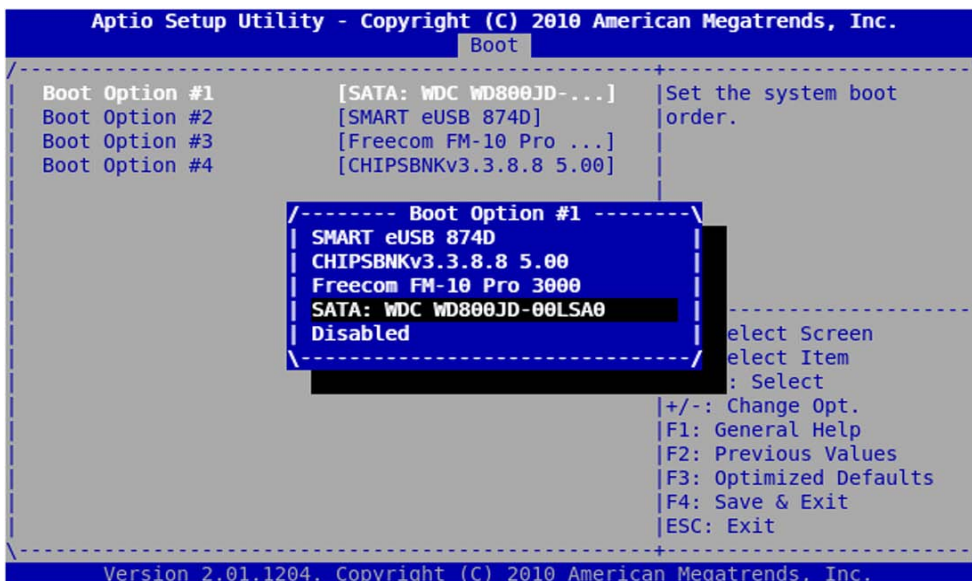
To change the boot device ordering

- ▶ Select a device from the list (Use the <↑> or <↓> to highlight the desired item)
- ▶ Use <+> or <-> control keys to move up/down the selected device item in the list

To disable one of the boot device

- ▶ Select a device from the list (Use the <↑> or <↓> to highlight the desired item)
- ▶ <Enter> to validate the choice

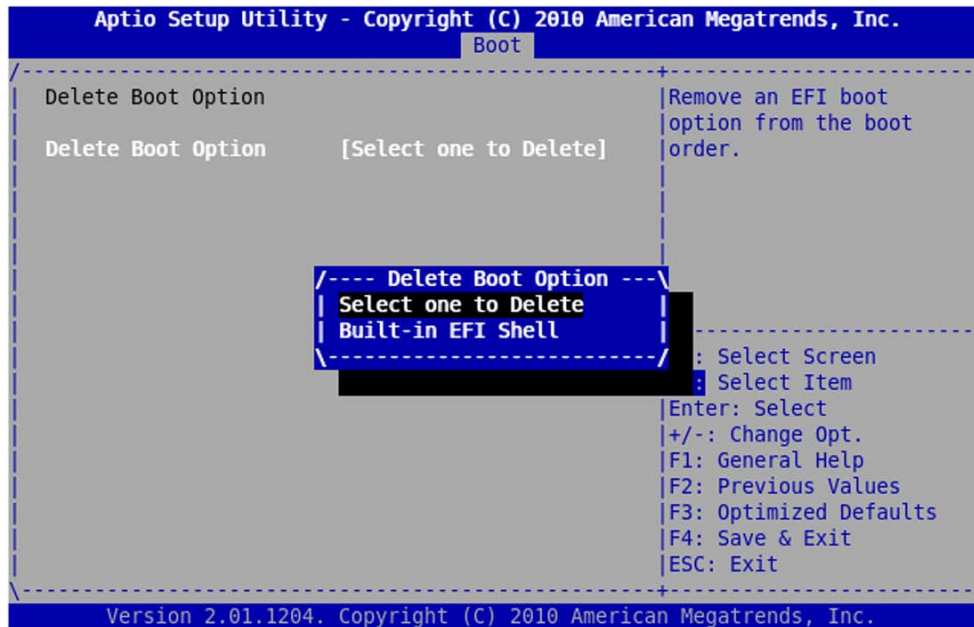
A new submenu appears (see image) , select Disabled to disable the SATA or USB device



7.8 Delete Boot Option

The setting allows to delete a boot device from the available boot device list.

In particular Built-In EFI shell can be deleted.



To delete a boot device like EFI Shell

- ▶ Select a device from the list (Use the <↑> or <↓> to highlight the desired item)
- ▶ <Enter> to validate the choice

Chapter 8 - Security Menu



The security Menu allows the user to set a password for SETUP or boot access.



If ONLY the Administrator's password is set, then this only limits access to Setup and is only asked for when entering Setup. If ONLY the User's password is set, then this is a power on password and must be entered both to boot or enter Setup. In Setup, the User will have Administrator rights.

A HDD Security Configure submenu can appear when a SATA disk is connected.

This submenu is Reserved and Not To Be Used

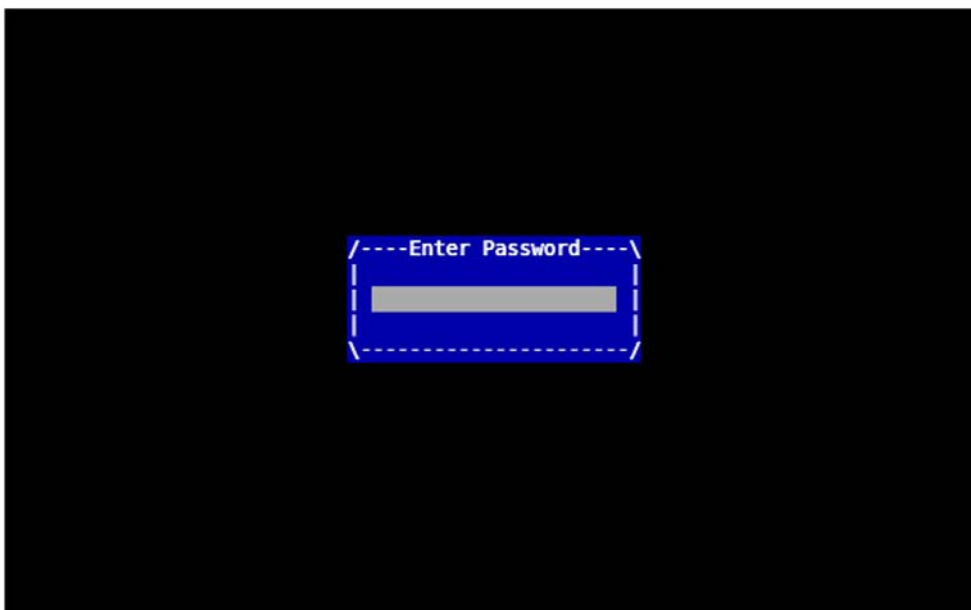
8.1 Enter Administrator or user password



To enter password:

- ▶ Select the administrator or user password item
- ▶ A pop-up window appears and proposes to you to create a new password
- ▶ Enter a password from 1 to 20 characters
- ▶ Confirm password
- ▶ Then the new password will be recorded if save change is launch in Save & Exit Menu.

At next reboot if <F2> key is pressed then entering password is mandatory to enter SETUP



When User password has been set the password will be required to entering SETUP and to to execute the BIOS boot device selection .

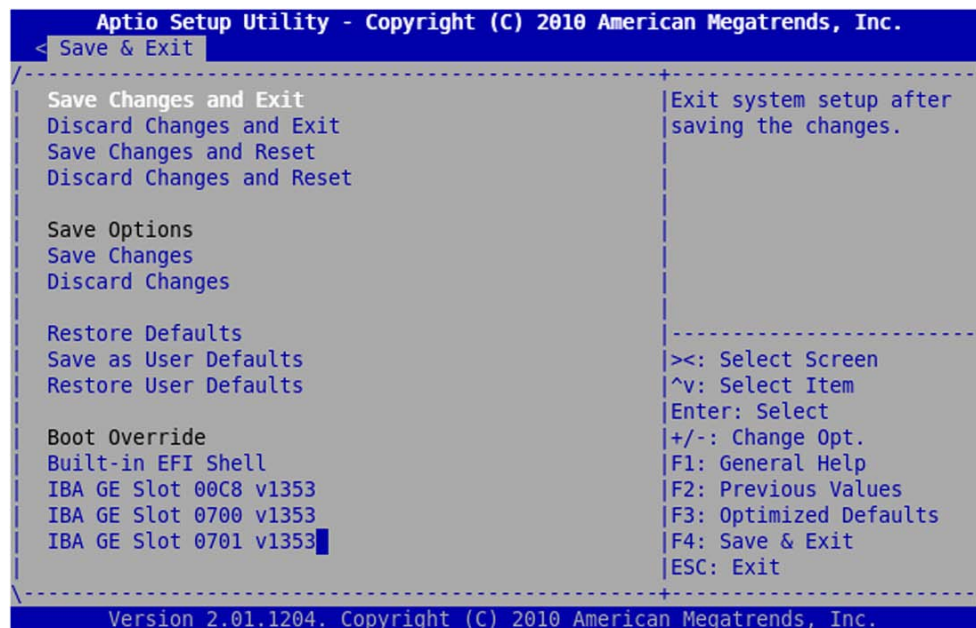
To suppress password

- ▶ Select the administrator or user password item
- ▶ A pop-up window appears and proposes to you to enter a password
- ▶ Enter previous password
- ▶ A pop-up window appears and proposes to you to enter a new password
- ▶ Then type an empty password
- ▶ Confirm empty password
- ▶ Password will be deleted if save change is launch in Save & Exit Menu.



If password is lost the solution to unlock it will be to flash the BIOS or to flash the SETUP BIOS part.

Chapter 9 - Save & Exit Menu



This Menu is used to save a new SETUP configuration, discard changes, restore default SETUP values, record a customized SETUP and override the boot device sequence. This menu does not appear as the first window when entering SETUP. It is necessary to navigate from the main menu to find it.

Available submenus are

- ▶ Save Changes and Exit: section 9.1 page 56
- ▶ Discard Changes and Exit: section 9.1 page 56
- ▶ Save Changes and Reset: section 9.1 page 56
- ▶ Discard Changes and Reset: section 9.1 page 56
- ▶ Save Changes: section 9.2 page 56
- ▶ Discard Changes: section 9.2 page 56
- ▶ Restore Defaults: section 9.2 page 56
- ▶ Save as User Defaults: section 9.3 page 56
- ▶ Restore User Defaults: section 9.3 page 56
- ▶ Boot Override: section 9.4 page 56

9.1 Option with Exit or reset

With one of the following options the user can choose to save or record the changes in SETUP and to reset or exit SETUP. Reset will perform a complete board reset while Exit will execute the Boot Device Selection for booting. To apply SETUP parameter modifications a reset is mandatory.

Select desired item and <Enter>

- ▶ Save Changes and Exit
- ▶ Discard Changes and Exit
- ▶ Saving the changes and reset
- ▶ Save Changes and Reset

9.2 Option to Save Discard Restore SETUP

SETUP modification can simply be Saved or Discarded without exiting BIOS SETUP. Also manufacturing default SETUP parameters can be restored with Restore Defaults menu.

Select desired item and <Enter>

- ▶ Save Changes
- ▶ Discard Changes
- ▶ Restore Defaults

9.3 Saving a user configuration

Current SETUP configuration can be saved as user configuration and can be restored the same way the default configuration.

Select desired item and <Enter>

- ▶ Save as User Defaults
- ▶ Restore User Defaults

9.4 Boot Override

Current sequence of boot devices can be overridden by this menu.

- ▶ Select a device from the list (Use the <↑> or <↓> to highlight the desired item
- ▶ <Enter> to immediately Boot on this device

Chapter 10 - EFI SHELL

EFI Shell is a boot shell available on the VX3030 that is accessible in the boot device list. EFI Shell is launched automatically if no other boot device is connected to the VX3030. If EFI shell is not the primary boot device then it is necessary to enter the SETUP menu to access it. For this, enter <F2> during boot process to enter SETUP. Then navigate to Save & Exit Menu and select UEFI shell in Boot override menu.

EFI SHELL is available by default on the graphical display or serial line COM0 configured at 115200 bauds.

EFI SHELL implements a set of command utilities and can be used to access or display various resources, to flash a new BIOS image or execute a start-up script.

10.1 EFI Shell Command

The Help command or (?) displays all the available command. Use option -b to display command screen by screen. Use help + command (like VX3030> help help) to have the detail of a command syntax

» VX3030> help

Command Name	Description	See Section
?	Displays the EFI Shell command list or verbose command help	10.1.20 page 75
alias	Displays, creates, or deletes EFI Shell aliases	10.1.1 page 59
amlview	AML view utility	10.1.2 page 60
bcfg	Boot configuration utility	10.1.3 page 61
cd	Displays or changes the current directory	10.1.4 page 62
cls	Clears standard output and optionally changes background color	10.1.5 page 63
connect	Connects one or more EFI drivers to a device	10.1.6 page 63
cpuutil	CPU information utility	10.1.7 page 64
date	Displays or changes the current system date.	10.1.8 page 65
devices	Displays the list of devices managed by EFI drivers	10.1.9 page 65
dh	Displays EFI handle information	10.1.10 page 66
disconnect	Disconnects one or more EFI drivers from a device	10.1.11 page 67
drvcfg	Invokes the Driver Configuration Protocol	10.1.12 page 68
drivers	Displays the EFI driver list	10.1.13 page 70
dumpacpi	Print ACPI Tables	10.1.14 page 71
dumpaml	Print AML dump	10.1.15 page 71
echo	Controls batch file command echoing or displays a message	10.1.16 page 72
exit	Exits the EFI Shell environment	10.1.17 page 72
for	Executes commands for each item in a set of items	10.1.18 page 73
goto	Forces batch file execution to jump to specified location	10.1.19 page 74
help	Displays the EFI Shell command list or verbose command help	10.1.20 page 75

Command Name	Description	See Section
if	Executes commands in specified conditions	10.1.21 page 76
ifconfig	UEFI network modification utility	10.1.22 page 77
kdiag	Perform board diagnostics - Available ONLY if ordered.	10.1.23 page 77
kflash	Kontron SPI flasher	10.1.24 page 78
kmac	Kontron MAC Address viewer	10.1.25 page 78
kp1d	Kontron PLD Commands	10.1.26 page 79
kuuid	Kontron UUID Configurator	10.1.26 page 70
kvpd	Kontron VPD Information	10.1.28 page 81
kvpx	Kontron VPX Configurator	10.1.29 page 82
ls	Displays a list of files and subdirectories in a directory	10.1.30 page 84
map	Displays or defines mappings	10.1.31 page 86
mem	Displays the contents of memory	10.1.32 page 89
memmap	Displays the memory map	10.1.33 page 91
mm	Displays or modifies MEM/MMIO/IO/PCI/PCIE address space	10.1.34 page 92
mv	Moves one or more files or directories to another location	10.1.35 page 95
pause	Prints a message and waits for keyboard input	10.1.36 page 96
pci	Displays PCI device list or PCI function configuration space	10.1.37 page 97
ping	Target IP ping utility	10.1.38 page 100
reconnect	Reconnects one or more EFI drivers to a device	10.1.39 page 100
reset	Resets the system	10.1.40 page 100
set	Displays or modifies EFI Shell environment variables	10.1.41 page 101
shift	Shifts batch file input parameter positions	10.1.42 page 102
smbiosview	Displays SMBIOS information	10.1.43 page 103
smbutil	SMBus utility	10.1.44 page 104
time	Displays or changes the current system time.	10.1.45 Page 104

10.1.1 alias

Displays, creates, or deletes aliases in the EFI Shell environment.

```
ALIAS [-d|-v] [sname] [value]
```

-d	Deletes an alias
-v	Volatile variable
sname	Alias name
value	Original name



1. 'sname' should not be an internal EFI Shell command.
2. 'value' can be an internal EFI Shell command, a script, or an EFI application. However, any other values are also acceptable.
3. ALIAS values are stored in EFI NVRAM and will be retained between boots unless the '-v' option is specified.
4. ALIAS will not add a nonvolatile alias when a volatile alias of the same name already exists, or vice versa.

> Examples:

- ▶ To display all aliases in the EFI Shell environment:

```
Shell> alias
      md      : mkdir
      rd      : rm
```

- ▶ To create an alias in the EFI Shell environment:

```
Shell> alias myguid guid
Shell> alias
      md      : mkdir
      rd      : rm
      myguid  : guid
```

- ▶ To delete an alias in the EFI Shell environment:

```
Shell> alias -d myguid
Shell> alias
      md      : mkdir
      rd      : rm
```

- ▶ To add a volatile alias in the current EFI environment, which has a star * at the line head. This volatile alias will disappear at next boot.

```
Shell> alias -v fs0 floppy
Shell> alias
      md      : mkdir
      rd      : rm
      * fs0   : floppy
```

10.1.2 amlview

View ACPI1.0b, ACPI2.0, or ACPI3.0 AML in EFI Shell Environment.

```
usage: AmlView [<AML file>]
```

Also AmlView propose its own shell syntax

```
fs0:\> AmlView
Welcome to AmlView on EFI Shell (Version 0.01)
DefinitionBlock ("Dsdtd.aml", "DSDT", 1, "ALASKA", "A M I", 0)
```

AmlView > help

```
EXEC    <NodeName>          : Print the result of the method node.
CAT     <NodeName>          : Print the node content.
LS [-R] [<NodeName>]        : List the node name. (-R means recursive)
CD      [<NodeName>]        : Change current node dir.
QUIT                                         : Quit Current Command Prompt.
HELP                                         : Print Help Information.
(NodeName format - [\]AAAA[.BBBB[...]])
```

10.1.3 bcfg

bcfg is an utility for boot configuration.

```
bcfg driver|boot [dump [-v]][add # file "desc"][rm #] [mv # #]

driver  selects boot driver list
boot    selects boot option list
dump    dumps selected list
-v      dumps verbose (includes load options)
add     add 'file' with 'desc' at position #
addp    add 'file' with 'desc' at position #.Use hard drive path
addh    add 'handle' with 'desc' at position #.Use Handle
rm      remove #
mv      move # to #
```

> Example:

The following example shows the ability to change boot device order without entering in BIOS setup.

```
Shell> bcfg boot dump
The boot option list is:
01.VenMedia(5023B95C-DB26-429B-A648-BD47664C8012)/C57AD6B7-0515-40A8-9D21-
551652854E37 "Built-in EFI Shell"
02. BBS-Net() "Network Card" OPT
03. Acpi(PNP0A03,0)/Pci(1D|0)/Usb(1, 0)/Usb(2, 0)/HD(Part1,SigBB2FF4E4) "UEFI: SMART eUSB 874D"
04. BBS-Harddrive() "Hard Drive" OPT
05. Acpi(PNP0A03,0)/Pci(1D|0)/Usb(1, 0)/Usb(1, 0)/HD(Part1,Sig00A94D6E) "UEFI: CHIPSBNKv3.3.8.8 5.00"
06. Not Found

Shell> bcfg boot mv 4 2
bcfg: boot option 4 moved to 2

Shell> bcfg boot dump
The boot option list is:
01.VenMedia(5023B95C-DB26-429B-A648-BD47664C8012)/C57AD6B7-0515-40A8-9D21-
551652854E37 "Built-in EFI Shell"
02. BBS-Harddrive() "Hard Drive" OPT
03. BBS-Net() "Network Card" OPT
04. Acpi(PNP0A03,0)/Pci(1D|0)/Usb(1, 0)/Usb(2, 0)/HD(Part1,SigBB2FF4E4) "UEFI: SMART eUSB 874D"
05. Acpi(PNP0A03,0)/Pci(1D|0)/Usb(1, 0)/Usb(1, 0)/HD(Part1,Sig00A94D6E) "UEFI: CHIPSBNKv3.3.8.8 5.00"
06. Not Found
```

10.1.4 cd

Displays or changes the current directory.

```
CD [path]
```

path The relative or absolute directory path



1. Type CD without parameters to display the current fs and directory.
2. There must be at least one blank space between CD and path.
3. The 'path' parameter supports certain special characters:
 - ▶ '.' refers to the current directory.
 - ▶ '..' refers to the parent directory.
 - ▶ '\' used at the beginning of the path refers to the root directory of the current filesystem.
4. CD can only be used to change directories in the current file system.

> Examples:

- ▶ To change the current filesystem to the mapped fs0 filesystem:

```
Shell> fs0:
```

- ▶ To change the current directory to subdirectory 'efi':

```
fs0:\> cd efi
```

- ▶ To change the current directory to the parent directory (fs0:\):

```
fs0:\efi\> cd ..
```

- ▶ To change the current directory to 'fs0:\efi\tools':

```
fs0:\> cd efi\tools
```

- ▶ To change the current directory to the root of the current fs (fs0):

```
fs0:\efi\tools\> cd \  
fs0:\>
```

- ▶ To change volumes with cd will not work!! For example:

```
fs0:\efi\tools\> cd fs1:\ !!!! will not work !!!!  
must first type fs1: then cd to desired directory
```

- ▶ To move between volumes and maintain the current path.

```
fs0:\> cd \efi\tools  
fs0:\efi\tools\> fs1:  
fs1:\> cd tmp  
fs1:\tmp> cp fs0:*. * .  
copies all of files in fs0:\efi\tools into fs1:\tmp directory  
fs0:\>
```

10.1.5 cls

Clears the standard output and optionally changes the background color.

CLS [color]

color	New background color
0	Black
1	Blue
2	Green
3	Cyan
4	Red
5	Magenta
6	Yellow
7	Light gray



1. If no parameters are specified, this command clears the standard output device. The background color is not changed.

> Examples:

- ▶ To clear standard output without changing the background color:

```
fs0:\> cls
```

- ▶ To clear standard output and change the background color to cyan:

```
fs0:\> cls 3
```

- ▶ To clear standard output and change the background to the default color:

```
fs0:\> cls 0
```

```
fs0:\>
```

10.1.6 connect

Reserved - Not To be Used

10.1.7 cpuutil

Cpuutil is an utility to know the CPU configuration.

```
EFI CpuUtil Display Utility
Copyright (c) Intel Corporation 2001
Version: v0.03

Usage: CpuUtil /cpuid x: where x is Processor ID Number in hex
       CpuUtil /cache : prints cache information
       CpuUtil /msr x: where x is the MSR number to read
       CpuUtil /bu x: where x is the microcode filename to load
       CpuUtil /info: prints CPU Information
NOTE: Reading reserved MSRs can hang the system
       CpuUtil /? returns the help info
       CpuUtil -? returns the help info
```

> Example:

```
VX3030> cpuutil /info
Vendor Id String = GenuineIntel
Highest supported input to CPUID (Basic) = 0xB
Highest supported input to CPUID (Extended) = 0x80000008
=====
Processor Family = 0x6
Processor Model = 0x25
Processor Stepping = 0x5
CPU Feature Info (ECX) = 0x009AE3FD
CPU Feature Info (EDX) = 0xBFEBFBFF
=====

Displaying CPU Cache and TLB Descriptors
-- Data TLB0: 2 MByte or 4 MByte pages, 4-way associative, 32 entries
-- Data TLB: 4 KByte pages, 4-way set associative, 64 entries
-- Instruction TLB: 2-MByte or 4-MByte pages, fully associative, 7 entries
-- 3rd-level cache: 4 MByte, 16-way set associative, 64 byte line size
-- Instruction TLB: 4 KByte pages, 4-way set associative, 64 entries
-- 64-Byte prefetching
-- 1st-level data cache: 32 KBytes, 8-way set associative, 64 byte line size
-- 2nd-level cache: 256 KBytes, 8-way set associative, 64 byte line size
-- Shared 2nd-level TLB: 4 KByte pages, 4-way set associative, 512 entries
-- 1st-level instruction cache: 32 KBytes, 4-way set associative, 64 byte line size

...waiting for 500 ms
Approx. CPU Speed = 2232 MHz
Processor Update Revision = 0x4
```

10.1.8 date

Displays or changes the current system date.

```
date [mm/dd/[yy]yy]
```

mm	Month of date to set, range: 1 - 12
dd	Day of date to set, range: 1 - 31
yyyy	Year of date to set, range: 1998 - 2099



1. Short year format:
yy: 98=1998, 99=1999, 00=2000, 01=2001, ..., 97=2097.
2. Long year format:
yyyy: 1998 - 2099, other values are invalid.
3. EFI may behave unpredictably if illegal date values are used.

10.1.9 devices

Displays the list of devices managed by EFI drivers.

```
DEVICES [-b] [-l XXX]
```

-b	Display one screen at a time
l XXX	Display devices using the specified ISO 639-2 language

Display Format:

CTRL	The handle number of the EFI device
TYPE	The device type: [R] Root Controller [B] Bus Controller [D] Device Controller
CFG	A managing driver supports the Driver Configuration Protocol
DIAG	A managing driver supports the Driver Diagnostics Protocol
#P	The number of parent controllers for this device
#D	The number of drivers managing the device
#C	The number of child controllers produced by this device
DEVICE NAME	The name of the device from the Component Name Protocol

10.1.10 dh

Displays EFI handle information.

```
DH [-l lang] [handle | -p prot_id] [-d] [-v]
```

handle	Handle number in hexadecimal format
-p	Protocol ID
-d	Display EFI Driver Model related information
-l	Display information in the specified ISO 639-2 language
-v	Display verbose information



1. When neither 'handle' nor 'prot_id' is specified, a list of all the device handles in the EFI environment is displayed.
2. The '-d' option displays EFI Driver Model related information including parent handles, child handles, all drivers installed on the handle, etc.
3. The '-v' option displays verbose information for the specified handle including all the protocols on the handle and their details.
4. If the '-p' option is specified, all handles containing the specified protocol will be displayed. Otherwise, the 'handle' parameter has to be specified for display. In this case, the '-d' option will be enabled automatically if the '-v' option is not specified.

> Examples:

- ▶ To display all handles one screen at a time:

```
Shell> dh -b
```

Handle dump

```
1: Image(DXE Core)
2: FwVol FwFileSys FwVolBlk DevPath(MemMap(11:1B50000-1D4FFC8))
3: Image(Ebc)
4: DevPath(MemMap(11:1CA0000-1CB0000))
5: Image(WinNtThunk)
6: WinNtThunk DevPath(..76F3-11D4-BCEA-0080C73C8881))
7: Image(WinNtBusDriver) DriverBinding
```

...

- ▶ To display detailed information for handle 0x30:

```
Shell> dh 30
```

Handle 30 (01AF5308)

Isalo

ROM Size.....: 00000000

ROM Location...: 00000000

ISA Resource List :

IO : 000003F8-000003FF Attr : 00000000

INT : 00000004-00000000 Attr : 00000000

dpath

PNP Device Path for PnP

HID A0341D0, UID 0

Hardware Device Path for PCI

PNP Device Path for PnP

HID 50141D0, UID 0

AsStr: 'Acpi(PNP0A03,0)/Pci(1F|0)/Acpi(PNP0501,0)'

- ▶ To display all handles associated with the 'diskio' protocol:

```
Shell> dh -p diskio
```

Handle dump by protocol 'Diskio'

15: Disklo Blklo DevPath(..i(3|1)/Ata(Secondary,Master))

16: Disklo Blklo DevPath(..,1)/PCI(0|0)/Scsi(Pun0,Lun0))

44: Disklo Blklo fs DevPath(..ABD0-01C0-507B-9E5F8078F531)) ESP

45: Disklo Blklo fs DevPath(..i(Pun0,Lun0)/HD(Part4,SigG0)) ESP

17: Disklo Blklo DevPath(..PCI(3|1)/Ata(Primary,Master))

- ▶ To display all handles associated with the 'Image' protocol and break when the screen is full:

```
Shell> dh -p Image -b
```

Handle dump by protocol 'image'

1: Image(DXE Core)

5: Image(WinNtThunk)

7: Image(WinNtBusDriver) DriverBinding

8: Image(Metronome)

A: Image(IsaBus) DriverBinding

B: Image(WinNtConsole) DriverBinding ...

10.1.11 disconnect

Reserved - Not To Be Used

10.1.12 drvcfg

Invokes the Driver Configuration Protocol.

```
DRVCFG [-l XXX] [-c] [-f Type|-v|-s]
        [DriverHandle [DeviceHandle [ChildHandle]]]
```

-l	Configure using the specified ISO 639-2 language
-c	Configure all child devices
-f	Force defaults
-v	Validate options
-s	Set options
Type	The type of default configuration options to force on the controller specified by ControllerHandle and ChildHandle: 0 - Safe Defaults. 1 - Manufacturing Defaults. 2 - Custom Defaults. 3 - Performance Defaults.
DriverHandle	Handle of the driver to configure
DeviceHandle	Handle of a device that DriverHandle is managing
ChildHandle	Handle of a device that is a child of DeviceHandle

Note:



1. Default Type.

0. Safe Defaults. Places a controller in a safe configuration with the greatest probability of functioning correctly in a platform.
1. Manufacturing Defaults. Optional type that places the controller in a configuration suitable for a manufacturing and test environment.
2. Custom Defaults. Optional type that places the controller in a custom configuration.
3. Performance Defaults. Optional type that places the controller in a configuration that maximizes the controller's performance in a platform.

Other Value - Depends on the driver's implementation.

> Examples:

- ▶ To display the list of devices available for configuration:

```
Shell> drvcfg
```

- ▶ To display the list of devices and child devices available for configuration:

```
Shell> drvcfg -c
```

- ▶ To force defaults on all devices:

```
Shell> drvcfg -f 0
```

- ▶ To force defaults on all devices managed by driver 0x17:

```
Shell> drvcfg -f 0 17
```

- ▶ To force defaults on device 0x28 which is managed by driver 0x17:

```
Shell> drvcfg -f 0 17 28
```

- ▶ To force defaults on all child devices of device 0x28 which is managed by driver 0x17:

```
Shell> drvcfg -f 0 17 28 -c
```

- ▶ To force defaults on child device 0x30 of device 0x28 which is managed by driver 0x17:

```
Shell> drvcfg -f 0 17 28 30
```

- ▶ To validate options on all devices:

```
Shell> drvcfg -v
```

- ▶ To validate options on all devices managed by driver 0x17:

```
Shell> drvcfg -v 17
```

- ▶ To validate options on device 0x28 which is managed by driver 0x17:

```
Shell> drvcfg -v 17 28
```

- ▶ To validate options on all child devices of device 0x28 which are managed by driver 0x17:

```
Shell> drvcfg -v 17 28 -c
```

- ▶ To validate options on child device 0x30 of device 0x28 which is managed by driver 0x17:

```
Shell> drvcfg -v 17 28 30
```

- ▶ To set options on device 0x28 which is managed by driver 0x17:

```
Shell> drvcfg -s 17 28
```

- ▶ To set options on child device 0x30 of device 0x28 which is managed by driver 0x17:

```
Shell> drvcfg -s 17 28 30
```

- ▶ To set options on device 0x28 which is managed by driver 0x17, in English:

```
Shell> drvcfg -s 17 28 -l eng
```

- ▶ To set options on device 0x28 which is managed by driver 0x17, in Spanish:

```
Shell> drvcfg -s 17 28 -l spa
```

10.1.13 drivers

Displays the EFI driver list.

DRIVERS [-1 XXX]	
-1	Display drivers using the specified ISO 639-2 language
Display Format:	
DRV	Handle number of the EFI driver
TYPE	Driver type: [B] - Bus Driver [D] - Device Driver
CFG	Driver supports the Driver Configuration Protocol
DIAG	Driver supports the Driver Diagnostics Protocol
#D	Number of devices managed by the driver
#C	Number of child devices produced by the driver
DRIVER NAME	Name of the driver from the Component Name Protocol
IMAGE NAME	File path from which the driver was loaded

> Examples:

- ▶ To display the list:

```
Shell> drivers
          T  D
D         Y C I
R         P F A
V  VERSION  E G G #D #C  DRIVER NAME  IMAGE NAME
== ===== = = = = = =====
39 00000010 D - - 1 -   Platform Console Management Driver  ConPlatform
3A 00000010 D - - 1 -   Platform Console Management Driver  ConPlatform
3B 00000010 B - - 1 1   Console Splitter Drive  ConSplitter
3C 00000010 ? - - - -   Console Splitter Driver  ConSplitter
3D 00000010 B - - 1 1   Console Splitter Driver  ConSplitter
3E 00000010 ? - - - -   Console Splitter Driver  ConSplitter
42 00000010 D - - 1 -   UGA Console Driver  GraphicsConsole
43 00000010 ? - - - -   Serial Terminal Driver  Terminal
44 00000010 D - - 1 -   Generic Disk I/O Driver  DiskIo
45 00000010 D - - 1 -   FAT File System Driver  Fat
48 00000010 ? - - - -   ISA Bus Driver  IsaBus
49 00000010 ? - - - -   ISA Serial Driver  IsaSerial
4C 00000010 B - - 1 1   PCI Bus Driver  PciBus
55 00000010 D X X 1 -   Windows Block I/O Driver  WinNtBlockIo
56 00000010 ? - - - -   Windows Text Console Driver  WinNtConsole
57 00000010 ? - - - -   Windows Serial I/O Driver  WinNtSerialIo
58 00000010 D - - 1 -   Windows Simple File System Driver  WinNtSimpleFileSystem
59 00000010 B - - 1 3   Windows Bus Driver  WinNtBusDriver
5F 00000010 D - - 1 -   Windows Universal Graphics Adapter  WinNtUga
```

10.1.14 dumpacpi

Dumps ACPI1.0b, ACPI2.0, or ACPI3.0 Table in EFI Shell Environment.

Usage:

```
DumpACPI [-d] [-v] [-p] [-b]
```

- d Dumps ACPI Table Raw Data.
- v Dumps ACPI Table Verbose Data.
- s Dumps ACPI Table with signature being <SIGN>.
The signature should be defined value in ACPI spec.
One exception is RSDP, please use RSDP instead of 'RSD PTR'.
- p Dumps the parsed AML Code.
- b Displays one screen at a time.

10.1.15 dumpaml

Dumps ACPI1.0b, ACPI2.0, or ACPI3.0 AML in EFI Shell Environment.

Usage:

```
DumpAML [-b] <AML file>
```

```
DumpAML <AML file> -e <AML Method Name> [<Argument>...]
```

- b Displays one screen at a time.
 - e Execute AML method.
- <AML Method Name> format: \AAAA.BBBB.CCCC.
- <Argument> format: memory content in string. (eg. 34120000 means 0x1234)

10.1.16 echo

Controls batch file command echoing or displays a message.

```
ECHO [-on|-off]
```

```
ECHO [message]
```

-on	Enable echo when executing batch file commands
-off	Disable echo when executing batch file commands
message	Display a message string



1. Echo -off disables the echo feature when executing batch file commands. This command is not like the MS-DOS echo command.
2. Echo without a parameter shows the current echo setting.

> Examples:

- ▶ To display the current echo setting:

```
fs0:\> echo  
Echo is off
```

- ▶ To enable command echoing:

```
fs0:\> echo -on
```

- ▶ To disable command echoing:

```
fs0:\> echo -off
```

- ▶ To execute HelloWorld.nsh batch file and echo commands when executing:

```
fs0:\> HelloWorld.nsh  
+HelloWorld.nsh> echo Hello World  
Hello World
```

- ▶ To display a message string of 'Hello World':

```
fs0:\> echo Hello World  
Hello World
```

10.1.17 exit

Exits the EFI Shell environment and returns control to the parent process. This command allows to exit the EFI shell and boot the next or first boot device in the boot list.

10.1.18 for

Executes one or more commands for each item in a set of items.

```

        FOR %indexvar IN set
command [arguments]
[command [arguments]]      ...
        ENDFOR
        FOR %indexvar RUN (start end[ step])
command [arguments]
[command [arguments]]      ...
        ENDFOR

```

%indexvar	Variable name used to index a set
set	Set to be searched
command [arguments]	Command to be executed with optional arguments



1. The FOR command is only available in batch script files.
2. FOR shall be matched with ENDFOR.
3. Start and end can be any integer. Up to 6 digits allowed.
4. Step can be any integer but zero. Up to 6 digits allowed.
5. step is optional, if step is not specified, step will be automatically determined as below:
 - if start <= end, then step = 1
 - if start > end, then step = -1

> Examples:

```

#
# Sample for loop type contents of all *.txt files
#
for %a in *.txt
    type %a
    echo ===== %a done =====
endfor
#
# To repeat operations, supporting multiple loop:
#
    for %a in 1 2 3 4 5 6 7 8 9
        for %b in a b c d e f g h i j k l m n o p q r s t u v w x y z
            alias %a a%a
            alias %b %b%a
        endfor
    endfor

    for %a run (1 3)
        echo %a
    endfor

Output:
1
2
3

    for %a run (3 1)
        echo %a
    endfor

Output:
3
2
1

```

10.1.19 goto

Forces batch file execution to unconditionally jump to specified location.

```
GOTO label
```

label Specifies a location in batch file



1. The GOTO command is only available in batch script files.
2. Execution of batch file will jump to the line immediately following the specified label name.
3. GOTO cannot jump from outside into a FOR cycle block.

> **Examples:**

```
                  #  
# Example script for "goto" command  
#  
goto Done  
...  
:Done  
cleanup.nsh
```

10.1.20 help

Displays the EFI Shell command list or verbose help for specific commands.

```
HELP [cmd | pattern]
```

cmd	Shell command name
pattern	Wildmatch pattern



1. 'cmd -?' also displays the verbose help of cmd, the same as 'help cmd'.
2. If the specified command has no verbose help, its line help will be displayed instead.

> Examples:

- ▶ To display the EFI Shell command list and break after one screen:

```
Shell> help -b
```

?	Displays the EFI Shell command list or verbose command help
alias	Displays, creates, or deletes aliases in the EFI Shell
attrib	Displays or changes the attributes of files or directories
cd	Displays or changes the current directory
cls	Clears the standard output with an optional background color
connect	Connects one or more EFI drivers to a device
copy	Copies one or more files or directories to another location
...	

- ▶ To display help information for the ls shell command:

```
Shell> help ls
Shell> ? ls
Shell> ls -?
```

- ▶ To display the list of commands starting with the character 'p'

```
Shell> help p*
pause      Prints a message and waits for keyboard input
pci
```

10.1.21 if

Executes one or more commands in specified conditions.

```

IF [NOT] EXIST file THEN
    command [arguments]
[ELSE
    command [arguments]]
ENDIF
IF [NOT] string1 == string2 THEN
    command [arguments]
    [command [arguments]]    ...
[ELSE
    command [arguments]
    [command [arguments]]    ...]
ENDIF

```

EXIST file	TRUE if file exists in the directory
string1 == string2	TRUE if the two strings are same



1. The IF command is only available in batch script files.
2. If condition is TRUE, commands between IF and ELSE will be executed.
3. If condition is FALSE but keyword 'NOT' is not prefixed, commands between ELSE and ENDIF will also be executed.

> Examples:

```

#
# Example script for "if" command
#
if exist fs0:\myscript.sc then
myscript myarg1 myarg2
endif
if %myvar% == runboth then
myscript1
myscript2
endif

```

10.1.22 ifconfig

IfConfig © Intel Corporation 2006

Modify the default IP address of UEFI network stack

- ▶ To list the current address:

```
IfConfig -l [Name]
```

Show the configuration for all or the interface

- ▶ To set the default address use:

```
IfConfig -s <Name> dhcp [perment]
```

Use the EFI_DHCP4_PROTOCOL to request address dynamically

```
IfConfig -s <Name> <static> <IP> <Mask> <Gateway> [perment]
```

Use the static IP4 address configuration

perment is optional. If present, the configuration survives the network stack reload. Otherwise, it is for this time only

- ▶ To clear the current address:

```
IfConfig -c [Name]
```

Clear the configuration for all or the interface although the configure is cleared, the network stack will fall back to the DHCP as default

- ▶ Other:

```
IfConfig -?
```

Show this help message

> Example:

```
IfConfig -s eth0 dhcp
```

```
IfConfig -l eth0
```

```
IfConfig -s eth0 static 192.168.0.5 255.255.255.0 192.168.0.1 perment
```



User have to enable "Network stack" in Advanced menu to have this command available.

10.1.23 kdiag

This command is fully described in document SD.DT.F94 "VX3030 PBIT User's Guide".

10.1.24 kflash

Kontron SPI flasher

Usage:

```
kflash [-ver] [ -p|-i|-v|-s|-h|-? ] [-f] [-r] [file]
```

▶ Operation mode

- ver display current BIOS ID
- p program flash
- i show information string and check CRC
- v verify flashed image
- s save current ROM image to file
- c clone flash content to second flash (Only in RESCUE mode)
- h Show this help

▶ Options

- f force write

▶ Expert options: Not recommended for standard use

- r raw image mode (.bin, .rom)

10.1.25 kmac

Kontron MAC Address writer/viewer

Usage:

```
kmac [ -h | -r ] [-w value] [-prog] [-dump] [[-save|-load] [filename]]
```

▶ Operation mode

- h Show this help
- r | --read Show MAC Address (82577 and 82580 chipsets)
- w | --write value Update MAC Address of the 82577 chipset and set adjacent addresses for 82580 chipset
value format = 0x0000DEaabbcc
- prog Program the 82580 EEPROM with a predefined image (not fully tested)
- dump Dump the first 1024 words of the 82580 EEPROM
- save filename Save the 82580 EEPROM contents to <filename>
- load filename Load the 82580 EEPROM with the contents of <filename>

> Example

```
VX3030> kmac -r
Dual link Gbe 82580 configuration
MAC Address of Intel 82577 = 00:00:DE:52:06:6A
MAC Address of Intel 82580 LAN0 = 00:00:DE:52:06:6B
MAC Address of Intel 82580 LAN1 = 00:00:DE:52:06:6C
```

10.1.26 kpld

Kontron PLD Commands: this command allows basics accesses to internal PLD registers and I2C device (EEPROM, Thermal sensors)

Usage:

```
kpld [ -h|-? ]
```

▶ Operation mode

- h Show this help
- v Show cpld revision
- m Memory information protection -r : Read cpld register
-> kpld -r Offset
- w Write cpld register
-> kpld -w Offset Value
- i2cr Read Access to I2C bus
-> kpld -i2cr busNum Add Offset Type
- i2cw Write Access to I2C bus
-> kpld -i2cw busNum Add Offset Type Data

10.1.27 kuuid

Kontron UUID configurator: this command allows user to change the default UUID value of the board and overcome the value set on the setup (See section 5.6 page 29).

Usage:

```
kuuid [ -a|-r|-p|-h ]
```

▶ Operation mode

-a | --ascii : Store UUID in ASCII format

-r | --raw : Store UUID in RAW format

-p | --print : Print UUID

-h | --help : Show this help

> Example:

```
VX3030> kuuid -r

Enter UUID[15-8]:0000000000000000
Enter UUID[7-0]:0000000000000003

Current UUID: 30303030-3030-3030-3030-303030303037
New      UUID: 00000000-0000-0000-0000-000000000003

Is this correct ?
[n] No (re-enter UUID)
[y] Yes
[q] Exit no change
y
WARNING: The UUID will be updated after a reset of the board.

VX3030> kuuid -p

Current UUID: 30303030-3030-3030-3030-303030303037

VX3030> reset

...

VX3030> kuuid -p

Current UUID: 00000000-0000-0000-0000-000000000003

VX3030>
```



It is mandatory to perform a reset at the end of the process to update UUID in SMBIOS table.

10.1.28 kvpd

Kontron VPD Information: display Vital Product Information

Usage:

```
kvpd [ -p|-m|-h ]
```

▶ Operation mode

- p Display VPD information
- m Modify or enter VPD information (Rescue Only)
- h Show this help

> Example

```
VX3030> kvpd -p
```

```
Current      configuration:
              Order Code   : VX3030-SA22-01000
              EC Level     : 01000
              Serial Number : 1110431010001
              Variant      : 0010042010020001
              Check Sum    : 021A1EF9
```

10.1.29 kvpx

Kontron VPX Configurator

Usage:

```
kvpx [-b|-h|-?] [-plx_eeprom [parameter]] [filename]
```

-b: enable page break
-h|-?: Show this help
-plx_eeprom: program PEX8609 Serial EEPROM

Parameter list:

BPx1: PEX8609 backplane PCIe Link Width Configuration x1
BPx4: PEX8609 backplane PCIe Link Width Configuration x4
BPdump: dump PEX8609 backplane Serial EEPROM

Options:

filename: custom configuration filename in binary format
or content of EEPROM filename in binary format

> Example:

```
VX3030> kvpx -plx_eeprom BPx1
Writing Backplane PEX8609 serial EEPROM in mode 4x1 OK
fs0:\> kvpx -plx_eeprom BPdump config_BP1x.dmp
Writing data to config_BP1x.dmp
fs0:\> kvpx -plx_eeprom BPx4
Writing Backplane PEX8609 serial EEPROM in mode 1x4 OK
```

```
fs0:\> kvpx -p1x_eeprom BPdump
@0x0000 = 0x0084005A
@0x0004 = 0x00800077
@0x0008 = 0x00773134
@0x000C = 0x31340000
@0x0010 = 0x00080435
@0x0014 = 0x0436FC00
@0x0018 = 0xFFE00008
@0x001C = 0x00080437
@0x0020 = 0x0438C000
@0x0024 = 0x00000000
@0x0028 = 0x0000070F
@0x002C = 0x43100400
@0x0030 = 0x04000000
@0x0034 = 0x00004311
@0x0038 = 0x43120400
@0x003C = 0x04000000
@0x0040 = 0x00084361
@0x0044 = 0x4362FC00
@0x0048 = 0xFFE00008
@0x004C = 0x00084363
@0x0050 = 0x4364C000
@0x0054 = 0x00000000
@0x0058 = 0x00004365
@0x005C = 0x040B8000
@0x0060 = 0x91001059
@0x0064 = 0x0000431A
@0x0068 = 0xC03A1000
@0x006C = 0xFC000008
@0x0070 = 0x0000C30F
@0x0074 = 0xC36D0400
@0x0078 = 0x00000001
@0x007C = 0x1059C00B
@0x0080 = 0x008F9100
@0x0084 = 0x00149C80
```

10.1.30 ls

Displays a list of files and subdirectories in a directory.

```
LS [-b] [-r] [-a[attrib]] [file]
```

-b	Display one screen at a time
-r	Display recursively (including subdirectories)
-a	Display files with attributes of type attrib
attrib	File attribute list:
a	Archive
s	System
h	Hidden
r	Read-only
d	Directory
file	Name of file or directory (wildcards are permitted)



- Files and directories with the system and hidden attributes are not displayed unless the 's' and 'h' attributes are specified.

> Examples:

- ▶ To hide files by adding the hidden and system attributes:

```
fs0:\> attrib +h +s *.efi
ASH fs0:\IsaBus.efi
ASH fs0:\IsaSerial.efi
```

- ▶ To display all files in the current directory:

```
fs0:\> ls
Directory of: fs0:\
06/18/01 09:32p          153 for.nsh
06/18/01 01:02p <DIR>    512 efi
06/18/01 01:02p <DIR>    512 test1
06/18/01 01:02p <DIR>    512 test2
06/18/01 08:04p           29 temp.txt
06/18/01 08:05p <DIR>    512 test
01/28/01 08:24p      r          29 readme.txt
      3 File(s)          211 bytes
      4 Dir(s)
```

- ▶ To display all files in the current directory:

```
fs0:\> ls -a
Directory of: fs0:\
06/18/01 09:32p          153  for.nsh
06/18/01 01:02p <DIR>     512  efi
06/18/01 01:02p <DIR>     512  test1
06/18/01 01:02p <DIR>     512  test2
06/18/01 10:59p       28,739  IsaBus.efi
06/18/01 10:59p       32,838  IsaSerial.efi
06/18/01 08:04p          29  temp.txt
06/18/01 08:05p <DIR>     512  test
01/28/01 08:24p      r          29  readme.txt
          5 File(s)      61,788 bytes
          4 Dir(s)
```

- ▶ To display all read-only files in the current directory:

```
fs0:\> ls -ar
Directory of: fs0:\
06/18/01 11:14p      r          29  readme.txt
          1 File(s)      29 bytes
          0 Dir(s)
```

- ▶ To display the file 'isabus.efi' with the system attribute:

```
fs0:\> ls -as isabus.efi
Directory of: fs0:\
06/18/01 10:59p       28,739  IsaBus.efi
          1 File(s)      28,739 bytes
          0 Dir(s)
```

- ▶ To display all files in the fs0:\efi directory recursively:

```
fs0:\> ls -r -a efi
```

- ▶ To display all files with the '*.efi' extension recursively one screen at a time:

```
fs0:\> ls -b -r -a *.efi
```

10.1.31 map

Displays or defines mappings between user defined names and device handles.

```
MAP [-d <sname>]
MAP [[-r][-v][-c][-f][-t <type[,type...]>][sname]]
MAP [sname handle | mapname]
```

-d	Delete a mapping
-r	Reset to default mappings
-v	Display verbose mapping information
sname	User defined mapping name (wildcards are permitted)
handle	The number of handle, which is same as dumped from 'dh' command
-c	Display the consistent mapping name
-f	Display the normal mapping name(not consistent mapping)
-t	Display the device mapping name according to the device type:
fp	Floppy
hd	Hard Disk
cd	CD-ROM
	Types can be combined by putting a comma between two types.
	Spaces are not allowed between types.
mapname	Mapped name for the device followed by a postfix '!'.



1. The consistent mapping is persistent across the mapping reset and the system reboot.
2. Only characters and numbers are allowed inside of sname.
3. Redirection is not allowed when running map because we do not know the file system before mapping is done.
4. Output redirection is not supported for 'map -r' usage.

> Examples:

- ▶ To reset the mapping table to the default mappings:

```
shell> map -r
Device mapping table
f4          UnknownDevice - Alias fs0 blk0
           Device Path  VenHw(58C518B1-76F3-11D4-BCEA-0080C73C8881)/VenHw(0C95A92F
-A006-11D4-BCFA-0080C73C8881)
fs0:       UnknownDevice - Alias f4 blk0
           Device Path  VenHw(58C518B1-76F3-11D4-BCEA-0080C73C8881)/VenHw(0C95A92F
-A006-11D4-BCFA-0080C73C8881)
blk0:      UnknownDevice - Alias f4 fs0
           Device Path  VenHw(58C518B1-76F3-11D4-BCEA-0080C73C8881)/VenHw(0C95A92F
-A006-11D4-BCFA-0080C73C8881)
```

- ▶ To display all mappings in the device mapping table:

```
Shell> map
Device mapping table
  f4      :UnknownDevice - Alias fs0 blk0
           Device Path VenHw(58C518B1-76F3-11D4-BCEA-0080C73C8881)/VenHw(0C95A92F
-A006-11D4-BCFA-0080C73C8881)
  fs0    :UnknownDevice - Alias f4 blk0
           Device Path VenHw(58C518B1-76F3-11D4-BCEA-0080C73C8881)/VenHw(0C95A92F
-A006-11D4-BCFA-0080C73C8881)
  blk0   :UnknownDevice - Alias f4 fs0
           Device Path VenHw(58C518B1-76F3-11D4-BCEA-0080C73C8881)/VenHw(0C95A92F
-A006-11D4-BCFA-0080C73C8881)
```

- ▶ To display verbose mapping table information:

```
Shell> map -v
Device mapping table
  f4      Consist Name  f4
           Other Name   fs0 blk0
           Handle       5F: Fs DiskIo BlkIo WinNtDriverIo
           Media Type   UnknownDevice
           Removable    NO
           Current Dir  \
           Device Path  VenHw(58C518B1-76F3-11D4-BCEA-0080C73C8881)/VenHw(0C95A92F
-A006-11D4-BCFA-0080C73C8881)
  fs0    Consist Name  f4
           Other Name   blk0
           Handle       5F: Fs DiskIo BlkIo WinNtDriverIo
           Media Type   UnknownDevice
           Removable    NO
           Current Dir  \
           Device Path  VenHw(58C518B1-76F3-11D4-BCEA-0080C73C8881)/VenHw(0C95A92F
-A006-11D4-BCFA-0080C73C8881)
  blk0   Consist Name  f4
           Other Name   fs0
           Handle       5F: Fs DiskIo BlkIo WinNtDriverIo
           Media Type   UnknownDevice
           Removable    NO
           Current Dir  \
           Device Path  VenHw(58C518B1-76F3-11D4-BCEA-0080C73C8881)/VenHw(0C95A92F
-A006-11D4-BCFA-0080C73C8881)
```

- ▶ To assign fs0 another name:

```
Shell> map floppy fs0:
  floppy:UnknownDevice - Alias f4 fs0 blk0
    Device Path VenHw(58C518B1-76F3-11D4-BCEA-0080C73C8881)/VenHw(0C95A92F
-A006-11D4-BCFA-0080C73C8881)
```

* To display information about the mapped name:

```
Shell> map floppy
  floppy:UnknownDevice - Alias f4 fs0 blk0
    Device Path VenHw(58C518B1-76F3-11D4-BCEA-0080C73C8881)/VenHw(0C95A92F
-A006-11D4-BCFA-0080C73C8881)
```

- ▶ To operate with the mapped name:

```
Shell> floppy:
floppy:\> ls
```

- ▶ To delete a mapped name:

```
Shell> map -d floppy
Shell> map
Device mapping table
  f4      :UnknownDevice - Alias fs0 blk0
    Device Path VenHw(58C518B1-76F3-11D4-BCEA-0080C73C8881)/VenHw(0C95A92F
-A006-11D4-BCFA-0080C73C8881)
  fs0    :UnknownDevice - Alias f4 blk0
    Device Path VenHw(58C518B1-76F3-11D4-BCEA-0080C73C8881)/VenHw(0C95A92F
-A006-11D4-BCFA-0080C73C8881)
  blk0   :UnknownDevice - Alias f4 fs0
    Device Path VenHw(58C518B1-76F3-11D4-BCEA-0080C73C8881)/VenHw(0C95A92F
-A006-11D4-BCFA-0080C73C8881)
```

- ▶ To display all the mapped names starting with 'f':

```
Shell> map f*
Device mapping table
  f4      :UnknownDevice - Alias fs0 blk0
    Device Path VenHw(58C518B1-76F3-11D4-BCEA-0080C73C8881)/VenHw(0C95A92F
-A006-11D4-BCFA-0080C73C8881)
  fs0    :UnknownDevice - Alias f4 blk0
    Device Path VenHw(58C518B1-76F3-11D4-BCEA-0080C73C8881)/VenHw(0C95A92F
-A006-11D4-BCFA-0080C73C8881)
```

10.1.32 mem

Displays the contents of system or device memory.

```
MEM [-b] [Address] [Size] [-MMIO]
```

- b Display one screen at a time
- address Starting address in hexadecimal format
- size Number of bytes to display in hexadecimal format
- MMIO Forces address cycles to the PCI bus



1. All units are in hexadecimal format.
2. Address must be aligned on an even processor address boundary.
3. If the 'address' parameter is not specified, DMEM will display the all system table pointer entries by default.

> **Examples:**

- ▶ To display the EFI system table pointer entries:

```
fs0:\> mem
Memory Address 000000003FF7D808 200 Bytes
3FF7D808: 49 42 49 20 53 59 53 54-02 00 01 00 78 00 00 00 *IBI SYST....x...*
3FF7D818: 5C 3E 6A FE 00 00 00 00-88 2E 1B 3F 00 00 00 00 *\>j.....?....*
3FF7D828: 26 00 0C 00 00 00 00 00-88 D3 1A 3F 00 00 00 00 *&.....?....*
3FF7D838: A8 CE 1A 3F 00 00 00 00-88 F2 1A 3F 00 00 00 00 *...?.....?....*
3FF7D848: 28 EE 1A 3F 00 00 00 00-08 DD 1A 3F 00 00 00 00 *(..?.....?....*
3FF7D858: A8 EB 1A 3F 00 00 00 00-18 C3 3F 3F 00 00 00 00 *...?.....*
3FF7D868: 00 4B 3F 3F 00 00 00 00-06 00 00 00 00 00 00 00 *.K.....*
3FF7D878: 08 DA F7 3F 00 00 00 00-70 74 61 6C 88 00 00 00 *...?....ptal....*
3FF7D888: 00 00 00 00 00 00 00 00-00 00 00 00 00 00 00 00 *.....*
3FF7D898: 00 00 00 00 00 00 00 00-00 00 00 00 00 00 00 00 *.....*
3FF7D8A8: 00 00 00 00 00 00 00 00-00 00 00 00 00 00 00 00 *.....*
3FF7D8B8: 00 00 00 00 00 00 00 00-00 00 00 00 00 00 00 00 *.....*
3FF7D8C8: 00 00 00 00 00 00 00 00-00 00 00 00 00 00 00 00 *.....*
3FF7D8D8: 00 00 00 00 00 00 00 00-00 00 00 00 00 00 00 00 *.....*
3FF7D8E8: 00 00 00 00 00 00 00 00-00 00 00 00 00 00 00 00 *.....*
3FF7D8F8: 00 00 00 00 00 00 00 00-70 68 06 30 88 00 00 00 *.....ph.0....*
3FF7D908: 65 76 6E 74 00 00 00 00-02 02 00 60 00 00 00 00 *evnt.....`....*
3FF7D918: 18 6F 1A 3F 00 00 00 00-10 E0 3F 3F 00 00 00 00 *.o?.....*
3FF7D928: 10 00 00 00 00 00 00 00-40 C0 12 3F 00 00 00 00 *.....@..?....*
3FF7D938: 10 80 13 3F 00 00 00 00-00 00 00 00 00 00 00 00 *...?.....*
3FF7D948: 00 00 00 00 00 00 00 00-40 7D 3F 3F 00 00 00 00 *.....@.....*
3FF7D958: 50 6F 1A 3F 00 00 00 00-00 00 00 00 00 00 00 00 *Po?.....*
3FF7D968: 00 00 00 00 00 00 00 00-00 00 00 00 00 00 00 00 *.....*
3FF7D978: 00 00 00 00 00 00 00 00-70 74 61 6C 88 00 00 00 *.....ptal....*
```

```

3FF7D988: 00 00 00 00 00 00 00 00 00-00 00 00 00 00 00 00 00 *.....*
3FF7D998: 00 00 00 00 00 00 00 00 00-00 00 00 00 00 00 00 00 *.....*
3FF7D9A8: 00 00 00 00 00 00 00 00 00-00 00 00 00 00 00 00 00 *.....*
3FF7D9B8: 00 00 00 00 00 00 00 00 00-00 00 00 00 00 00 00 00 *.....*
3FF7D9C8: 00 00 00 00 00 00 00 00 00-00 00 00 00 00 00 00 00 *.....*
3FF7D9D8: 00 00 00 00 00 00 00 00 00-00 00 00 00 00 00 00 00 *.....*
3FF7D9E8: 00 00 00 00 00 00 00 00 00-00 00 00 00 00 00 00 00 *.....*
3FF7D9F8: 00 00 00 00 00 00 00 00 00-70 68 06 30 A0 00 00 00 *.....ph.0....*
Valid EFI Header at Address 000000003FF7D808

```

```

-----
System: Table Structure size 00000078 revision 00010002
ConIn (3F1AD388) ConOut (3F1AF288) StdErr (3F1ADD08)
Runtime Services 000000003F3FC318
Boot Services    000000003F3F4B00
SAL System Table 000000003FF22760
ACPI Table       000000003FFD9FC0
ACPI 2.0 Table   00000000000E2000
MPS Table        000000003FFD0000
SMBIOS Table     0000000000F0020

```

- ▶ To display memory contents from 1af3088 with size of 16 bytes:

```

Shell> mem 1af3088 16
Memory Address 000000001AF3088 16 Bytes
01AF3088: 49 42 49 20 53 59 53 54-00 00 02 00 18 00 00 00 *IBI SYST.....*
01AF3098: FF 9E D7 9B 00 00 *.....*

```

- ▶ To display memory mapped IO contents from 1af3088 with size of 16 bytes:

```

Shell> mem 1af3088 16 -MMIO

```

10.1.33 memmap

Displays the memory map maintained by the EFI environment.

MEMMAP [-b]

-b Display one screen at a time



1. The EFI environment keeps track all the physical memory in the system and how it is currently being used.
2. Total memory is the physical memory size not including the MemMapIO and MemPortIO size
3. Refer to the EFI specification for memory type definitions.

> Examples:

- ▶ To display the system memory map:

```

fs0:\> memmap
Type      Start      End          # Pages    Attributes
available 00000000075000-0000000001841FFF 0000000000010F2 0000000000000009
LoaderCode 0000000001842000-00000000018A3FFF 000000000000062 0000000000000009
available 00000000018A4000-00000000018C1FFF 00000000000001E 0000000000000009
LoaderData 00000000018C2000-00000000018CAFFF 000000000000009 0000000000000009
BS_code    00000000018CB000-0000000001905FFF 00000000000003B 0000000000000009
BS_data    0000000001906000-00000000019C9FFF 0000000000000C4 0000000000000009 ...
RT_data    0000000001B2B000-0000000001B2BFFF 000000000000001 8000000000000009
BS_data    0000000001B2C000-0000000001B4FFFF 000000000000024 0000000000000009
reserved   0000000001B50000-0000000001D4FFFF 000000000000200 0000000000000009

reserved  :    512 Pages (2,097,152)
LoaderCode:    98 Pages (401,408)
LoaderData:   32 Pages (131,072)
BS_code   :   335 Pages (1,372,160)
BS_data   :   267 Pages (1,093,632)
RT_data   :    19 Pages (77,824)
available :  4,369 Pages (17,895,424)
Total Memory: 20 MB (20,971,520) Bytes

```

10.1.34 mm

Displays or modifies MEM/MMIO/IO/PCI/PCIE address space.

```
MM Address [Value] [-w 1|2|4|8] [-MEM | -MMIO | -IO | -PCI | -PCIE] [-n]
```

Address	Starting address
Value	The value to write
-MEM	Memory Address type
-MMIO	Memory Mapped IO Address type
-IO	IO Address type
-PCI	PCI Configuration Space Address type: Address format: 0x000000ssbbddfrr
	ss Segment
	bb Bus
	dd Device
	ff Function
	rr Register
-PCIE	PCIE Configuration Space Address type: Address format: 0x000000ssbbddfrrr
	ss Segment
	bb Bus
	dd Device
	ff Function
	rrr Register
-w	Unit size accessed in bytes:
	1 1 byte
	2 2 bytes
	4 4 bytes
	8 8 bytes
-n	Non-interactive mode



1. If the address type parameter is not specified, address type defaults to the 'MEM' type.
2. If the 'Value' parameter is specified, the '-n' option will be used automatically. In this case, this command will write the value to the specified address in non-interactive mode. If the 'Value' parameter is not specified, only the current contents in the address are displayed.
3. If the '-w' option is not specified, unit size defaults to 1 byte.
4. If the PCI address type is specified, the 'Address' parameter should follow the PCI Configuration Space Address format above. The 'PCI' command can be used to determine the address for a specified device. It is listed in the PCI configuration space dump information, in the following format: "[EFI 0x000000ssbbddfxx]".
5. If the PCIE address type is specified, the 'Address' parameter should follow the PCIE Configuration Space Address format above.
6. In interactive mode, type a hex value to modify, 'q' or '.' to exit. If the '-n' option is specified, it will run in non-interactive mode which supports batch file operation without user intervention.
7. Not all PCI configuration register locations are writable.
8. MM will only write the specified value. Read-modify-write operations are not supported.
9. The 'Address' parameter should be aligned on a boundary of the specified width.
10. Not all addresses are safe to access. Access to any improper address can bring unexpected results.

> Examples:

- ▶ To display or modify memory:

```
Address 0x1b07288, default width=1 byte:
fs0:\> mm 1b07288
MEM 0x000000001B07288 : 0x6D >
MEM 0x000000001B07289 : 0x6D >
MEM 0x000000001B0728A : 0x61 > 80
MEM 0x000000001B0728B : 0x70 > q
fs0:\> mm 1b07288
MEM 0x000000001B07288 : 0x6D >
MEM 0x000000001B07289 : 0x6D >
MEM 0x000000001B0728A : 0x80 > *Modified
MEM 0x000000001B0728B : 0x70 > q
```

- ▶ To modify memory:

```
Address 0x1b07288, width = 2 bytes:
Shell> mm 1b07288 -w 2
MEM 0x000000001B07288 : 0x6D6D >
MEM 0x000000001B0728A : 0x7061 > 55aa
MEM 0x000000001B0728C : 0x358C > q
Shell> mm 1b07288 -w 2
MEM 0x000000001B07288 : 0x6D6D >
MEM 0x000000001B0728A : 0x55AA > *Modified
MEM 0x000000001B0728C : 0x358C > q
```

- ▶ To display IO space:

```
Address 80h, width = 4 bytes:
Shell> mm 80 -w 4 -IO
IO 0x0000000000000080 : 0x000000FE >
IO 0x0000000000000084 : 0x00FF5E6D > q
```

- ▶ To modify IO space using non-interactive mode:

```
Shell> mm 80 52 -w 1 -IO
Shell> mm 80 -w 1 -IO
IO 0x0000000000000080 : 0x52 > FE *Modified
IO 0x0000000000000081 : 0xFF >
IO 0x0000000000000082 : 0x00 >
IO 0x0000000000000083 : 0x00 >
IO 0x0000000000000084 : 0x6D >
IO 0x0000000000000085 : 0x5E >
IO 0x0000000000000086 : 0xFF >
IO 0x0000000000000087 : 0x00 > q
```

- ▶ To display PCI configuration space, ss=00, bb=00, dd=00, ff=00, rr=00:

```
Shell> mm 000000000 -PCI
PCI 0x0000000000000000 : 0x86 >
PCI 0x0000000000000001 : 0x80 >
PCI 0x0000000000000002 : 0x30 >
PCI 0x0000000000000003 : 0x11 >
PCI 0x0000000000000004 : 0x06 >
PCI 0x0000000000000005 : 0x00 > q
```

These contents can also be displayed by 'PCI 00 00 00'.

- ▶ To display PCIE configuration space, ss=00, bb=06, dd=00, ff=00, rrr=000:

```
Shell> mm 00060000000 -PCIE
PCIE 0x0000000060000000 : 0xAB >
PCIE 0x0000000060000001 : 0x11 >
PCIE 0x0000000060000002 : 0x61 >
PCIE 0x0000000060000003 : 0x43 >
PCIE 0x0000000060000004 : 0x00 > q
```

10.1.35 mv

Moves one or more files or directories to another location.

```
MV src [src...] [dst]
```

src Source file/directory name (wildcards are permitted)
dst Destination file/directory name (wildcards not permitted)



1. If the 'dst' parameter is not specified, the current directory is assumed to be the destination.
2. If there is more than one argument in the command line, the last one will be taken as 'dst' unconditionally. If there is more than one source file or directory to move, the 'dst' should be an existing directory.
3. Attempting to move a read-only file or directory is not allowed.
4. Moving a directory that contains read-only file(s) is allowed.
5. You cannot move a directory into itself or its subdirectories.
6. You cannot move a directory if the current directory is itself or its subdirectory.
7. Redirecting output to a file under a directory to be moved is not allowed.
8. If an error occurs, the remaining files or directories will still be moved.

> Examples:

- ▶ To rename a file:

```
fs0:\> mv IsaBus.efi Bus.efi
moving fs0:\IsaBus.efi -> \Bus.efi
- [ok]
```

- ▶ To move a directory to the current directory:

```
fs0:\> mkdir test1\temp
fs0:\> mv test1\temp
moving fs0:\test1\temp -> \.\temp
- [ok]
```

- ▶ To rename a directory:

```
fs0:\> mv efi efi1.1
moving fs0:\efi -> \efi1.1
- [ok]
```

- ▶ To move multiple directories at a time:

```
fs0:\> mv test1 test2 test
moving fs0:\test1 -> \test\test1
- [ok]
moving fs0:\test2 -> \test\test2
- [ok]
```

- ▶ Moving a read-only directory will result a failure:

```
fs0:\test> attrib +r temp1
DA R fs0:\test\temp1
fs0:\test> mv temp1 temp2
moving fs0:\test\temp1 -> \test\temp2
- [error] - Write Protected
```

10.1.36 pause

Prints a message and waits for keyboard input.

```
PAUSE [-q]
```

-q Do not display notification message



1. The PAUSE command is only available in batch script files.
2. The prompt message is "Enter 'q' to quit, any other key to continue".

> Examples:

- ▶ To pause the system after displaying the date and time:

```
fs0:\> type pause.nsh
File: fs0:\pause.nsh, Size 204
#
# Example script for 'pause' command
#
echo pause.nsh begin..
date
time
pause
echo pause.nsh done.
```

- ▶ To execute the script with echo on:

```
+pause.nsh> echo pause.nsh begin..
pause.nsh begin..
+pause.nsh> date
06/19/2001
+pause.nsh> time
00:51:45
+pause.nsh> pause
Enter 'q' to quit, any other key to continue:
+pause.nsh> echo pause.nsh done.
pause.nsh done.
fs0:\> pause.nsh
```

- ▶ To execute the script with echo off:

```
fs0:\> echo -off
fs0:\> pause.nsh
pause.nsh begin..
06/19/2001
00:52:50
Enter 'q' to quit, any other key to continue: q
fs0:\>
```

10.1.37 pci

Displays PCI device list or PCI function configuration space.

```
PCI [Bus Dev [Func] [-s Seg] [-i]]
```

Bus	Bus number
Dev	Device number
Func	Function number
-s	Optional segment number specified
Seg	Segment number
-i	Information interpreted



1. If no parameters are specified all PCI devices will be listed.
2. If the Bus and Device number parameters are specified while the Function or Segment parameters are not, Function or Segment will be set as default value 0.
3. The '-i' option can be used to display verbose information for the specified PCI device. The PCI configuration space for the specified device will be dumped with a detailed interpretation.

> Examples on VX3030:

- ▶ To display all PCI devices in the system:

```
VX3030> pci
  Seg  Bus  Dev  Func
  ---  ---  ---  ----
  00   00   00   00 ==> Bridge Device - Host/PCI bridge
          Vendor 8086 Device 006A Prog Interface 0
  00   00   01   00 ==> Bridge Device - PCI/PCI bridge
          Vendor 8086 Device 0045 Prog Interface 0
  00   00   02   00 ==> Display Controller - VGA/8514 controller
          Vendor 8086 Device 0046 Prog Interface 0
  00   00   06   00 ==> Bridge Device - PCI/PCI bridge
          Vendor 8086 Device 0047 Prog Interface 0
  00   00   16   00 ==> Simple Communications Controllers - Other communicati
          Vendor 8086 Device 3B64 Prog Interface 0
  00   00   16   01 ==> Simple Communications Controllers - Other communicati
          Vendor 8086 Device 3B65 Prog Interface 0
  00   00   16   02 ==> Mass Storage Controller - IDE controller
          Vendor 8086 Device 3B66 Prog Interface 85
  00   00   16   03 ==> Simple Communications Controllers - Serial controller
          Vendor 8086 Device 3B67 Prog Interface 2
  00   00   19   00 ==> Network Controller - Ethernet controller
          Vendor 8086 Device 10EA Prog Interface 0
  00   00   1A   00 ==> Serial Bus Controllers - USB
          Vendor 8086 Device 3B3C Prog Interface 20
  00   00   1C   00 ==> Bridge Device - PCI/PCI bridge
          Vendor 8086 Device 3B42 Prog Interface 0
  00   00   1C   04 ==> Bridge Device - PCI/PCI bridge
          Vendor 8086 Device 3B4A Prog Interface 0
  00   00   1D   00 ==> Serial Bus Controllers - USB
          Vendor 8086 Device 3B34 Prog Interface 20
```

```

00 00 1E 00 ==> Bridge Device - PCI/PCI bridge
Vendor 8086 Device 2448 Prog Interface 1
00 00 1F 00 ==> Bridge Device - PCI/ISA bridge
Vendor 8086 Device 3B07 Prog Interface 0
00 00 1F 02 ==> Mass Storage Controller - IDE controller
Vendor 8086 Device 3B2E Prog Interface 8F
00 00 1F 03 ==> Serial Bus Controllers - System Management Bus
Vendor 8086 Device 3B30 Prog Interface 0
00 00 1F 05 ==> Mass Storage Controller - IDE controller
Vendor 8086 Device 3B2D Prog Interface 85
00 02 00 00 ==> Bridge Device - PCI/PCI bridge
Vendor 10B5 Device 8609 Prog Interface 0
00 02 00 01 ==> Base System Peripherals - Other system peripheral
Vendor 10B5 Device 8609 Prog Interface 0
00 03 01 00 ==> Bridge Device - Other bridge type
Vendor 10B5 Device 8609 Prog Interface 0
00 05 00 00 ==> Network Controller - Ethernet controller
Vendor 8086 Device 1510 Prog Interface 0
00 05 00 01 ==> Network Controller - Ethernet controller
Vendor 8086 Device 1510 Prog Interface 0
    
```

VX3030>

- ▶ To display the configuration space of Bus 0, Device 16, Function 0:

```

VX3030> pci 00 16 00 -i
PCI Segment 00 Bus 00 Device 16 Func 00 [EFI 8000000000000000160000]
00000000: 86 80 64 3B 00 00 10 00-06 00 80 07 00 00 80 00 *.d;.....
00000010: 04 70 E2 F7 00 00 00 00-00 00 00 00 00 00 00 *.p.....
00000020: 00 00 00 00 00 00 00 00-00 00 00 00 86 80 64 3B *......d;
00000030: 00 00 00 00 50 00 00 00-00 00 00 00 0B 01 00 00 *....P.....
00000040: 05 02 11 EA 00 00 01 80-1F 00 0B 00 00 00 00 00 *......
00000050: 01 8C 03 C8 08 00 00 00-00 00 00 00 00 00 00 *......
00000060: 00 00 00 00 00 00 00 00-00 00 00 00 00 00 00 *......
00000070: 00 00 00 00 00 00 00 00-00 00 00 00 00 00 00 *......
00000080: 00 00 00 00 00 00 00 00-00 00 00 00 05 00 80 00 *......
00000090: 00 00 00 00 00 00 00 00-00 00 00 00 00 00 00 00 *......
000000A0: 00 00 00 00 00 00 00 00-00 00 00 00 00 00 00 00 *......
000000B0: 00 00 00 00 00 00 00 00-00 00 00 00 02 00 00 40 *......@
000000C0: DA DA AB 31 43 73 B2 86-57 AF 74 FC 9B FC 20 04 *...1Cs..W.t...
000000D0: 98 B5 AA D7 CD B6 F1 25-F8 0B 26 1E 0D B3 9D 55 *.....%..&....U
PCI Segment 00 Bus 00 Device 16 Func 00 [EFI 8000000000000000160000].....
00000000: 86 80 64 3B 00 00 10 00-06 00 80 07 00 00 80 00 *.d;.....*
00000010: 04 70 E2 F7 00 00 00 00-00 00 00 00 00 00 00 00 *.p.....*
00000020: 00 00 00 00 00 00 00 00-00 00 00 00 86 80 64 3B *......d;*
00000030: 00 00 00 00 50 00 00 00-00 00 00 00 0B 01 00 00 *....P.....*

00000040: 05 02 11 EA 00 00 01 80-1F 00 0B 00 00 00 00 00 *......*
00000050: 01 8C 03 C8 08 00 00 00-00 00 00 00 00 00 00 *......*
00000060: 00 00 00 00 00 00 00 00-00 00 00 00 00 00 00 *......*
00000070: 00 00 00 00 00 00 00 00-00 00 00 00 00 00 00 *......*
00000080: 00 00 00 00 00 00 00 00-00 00 00 00 05 00 80 00 *......*
00000090: 00 00 00 00 00 00 00 00-00 00 00 00 00 00 00 00 *......*
    
```

```

000000A0: 00 00 00 00 00 00 00 00 00-00 00 00 00 00 00 00 00 *.....*
000000B0: 00 00 00 00 00 00 00 00 00-00 00 00 00 02 00 00 40 *.....@*
000000C0: DA DA AB 31 43 73 B2 86-57 AF 74 FC 9B FC 20 04 *...1Cs..W.t... *
000000D0: 98 B5 AA D7 CD B6 F1 25-F8 0B 26 1E 0D B3 9D 55 *.....%..&....U*
000000E0: 00 00 00 00 00 00 00 00 00-00 00 00 00 00 00 00 00 *.....*
000000F0: 00 00 00 00 00 00 00 00 00-00 00 00 00 00 00 00 00 *.....*

Vendor ID(0): 8086                      Device ID(2): 3B64

Command(4): 0000
(00)I/O space access enabled:          0 (01)Memory space access enabled:      0
(02)Behave as bus master:              0 (03)Monitor special cycle enabled:    0
(04)Mem Write & Invalidate enabled:    0 (05)Palette snooping is enabled:      0
(06)Assert PERR# when parity error:    0 (07)Do address/data stepping:         0
(08)SERR# driver enabled:              0 (09)Fast back-to-back transact....:  0

Status(6): 0010
(04)New Capabilities linked list:      1 (05)66MHz Capable:                    0
(07)Fast Back-to-Back Capable:        0 (08)Master Data Parity Error:         0
(09)DEVSEL timing:                    Fast (11)Signaled Target Abort:           0
(12)Received Target Abort:            0 (13)Received Master Abort:           0
(14)Signaled System Error:            0 (15)Detected Parity Error:           0
Revision ID(8): 06                     BIST(0F): Incapable
Cache Line Size(C): 00                 Latency Timer(D): 00
Header Type(0E): 80, Multi-function, PCI device
Class: Simple Communications Controllers - Other communication device -
Base Address Registers(10):
  Start_Address  Type  Space  Prefetchable?  Size  Limit
-----
00000000F7E27000 Mem   64 bits  No             0000000000000010 00000000F7E2700F
-----

Expansion ROM Disabled(30)

Cardbus CIS ptr(28): 00000000
Sub VendorID(2C): 8086      Subsystem ID(2E): 3B64
Capabilities Ptr(34): 50
Interrupt Line(3C): 0B      Interrupt Pin(3D): 01
Min_Gnt(3E): 00           Max_Lat(3F): 00

VX3030>

```

10.1.38 ping

Usage:

```
Ping [-n count] [-l size] TargetIp
```

Options:

- n count Number of echo requests to send.
- l size Send buffer size.



User have to enable "Network stack" in Advanced menu to have this command available.

10.1.39 reconnect

Reserved - Not To Be Used

10.1.40 reset

Resets the system.

```
RESET [-w [string]]
```

```
RESET [-s [string]]
```

- w Performs a warm reset
- s Performs a shutdown
- string String to be passed to reset service



1. Reset will be guaranteed to reset the chipset as well as the processor when cold reset is called.
2. This command does not support output redirection.

10.1.41 set

Displays, creates, changes, or deletes EFI Shell environment variables.

```
SET [-v] [sname [value]]
SET [-d <sname>]
```

-d Deletes the environment variable
 -v Volatile variable
 sname Environment variable name
 value Environment variable value



1. SET values are stored in EFI NVRAM and will be retained between boots unless the option -v is specified.

> Examples:

- ▶ To add an environment variable:

```
Shell> set DiagnosticPath fs0:\efi\diag;fs1:\efi\diag
```

- ▶ To display all environment variables:

```
Shell> set
* path               : .
diagnosticPath : fs0:\efi1.1\diag;fs1:\efi1.1\diag
```

- ▶ To delete an environment variable:

```
Shell> set -d diagnosticpath
Shell> set
* path               : .
```

- ▶ To change an environment variable:

```
fs0:\> set src efi
fs0:\> set
* path : .;fs0:\efi\tools;fs0:\efi\boot;fs0:\
src : efi
fs0:\> set src efi1.1
fs0:\> set
* path : .;fs0:\efi\tools;fs0:\efi\boot;fs0:\
src : efi1.1
```

- ▶ To append an environment variable:

```
Shell> set
* path               : .
Shell> set path %path%;fs0:\efi\tools;fs0:\efi\boot;fs0:\
Shell> set
* path               : .;fs0:\efi\tools;fs0:\efi\boot;fs0:\
```

- ▶ To set a volatile variable that will disappear at the next boot:

```
Shell> set -v EFI_SOURCE c:\project\EFI1.1
Shell> set
* path               : .;fs0:\efi\tools;fs0:\efi\boot;fs0:\
* EFI_SOURCE : c:\project\EFI1.1
```

10.1.42 shift

Shifts batch file input parameter positions.

SHIFT



1. The SHIFT command is only available in batch script files.
2. Each time the SHIFT command is executed the parameters are shifted one position higher, giving you access to more than ten parameters.

> Examples:

- ▶ To execute a batch file named `MyScript.nsh`:

```
fs0:\> MyScript.nsh X1 X2 X3 X4 X5 X6 X7 X8 X9 X10
```

The parameters available when `MyScript.nsh` initially begins execution will be set as follows:

```
%1 = X1  
%2 = X2  
%3 = X3  
%4 = X4  
%5 = X5  
%6 = X6  
%7 = X7  
%8 = X8  
%9 = X9
```

- ▶ To shift the parameters one position inside the batch file:

```
shift
```

The parameters available in `MyScript.nsh` are changed as follows:

```
%1 = X2  
%2 = X3  
%3 = X4  
%4 = X5  
%5 = X6  
%6 = X7  
%7 = X8  
%8 = X9  
%9 = X10
```

10.1.43 smbiosview

Displays SMBIOS information.

```
SMBIOSVIEW [-t SmbiosType] | [-h SmbiosHandle] | [-s] | [-a]
```

-t	Display all structures of SmbiosType
SmbiosType	SMBIOS structure type
-h	Display structure of SmbiosHandle
SmbiosHandle	SMBIOS structure unique 16-bit handle
-s	Display statistics table
-a	Display all information



- The SmbiosType parameter supports the following types:
 - 0 - BIOS Information
 - 1 - System Information
 - 3 - System Enclosure
 - 4 - Processor Information
 - 5 - Memory Controller Information
 - 6 - Memory Module Information
 - 7 - Cache Information
 - 8 - Port Connector Information
 - 9 - System Slots
 - 10 - On Board Devices Information
 - 15 - System Event Log
 - 16 - Physical Memory Array
 - 17 - Memory Device
 - 18 - 32-bit Memory Error Information
 - 19 - Memory Array Mapped Address
 - 20 - Memory Device Mapped Address
 - 21 - Built-in Pointing Device
 - 22 - Portable Battery
 - 34 - Management Device
 - 37 - Memory Channel
 - 38 - IPMI Device Information
 - 39 - System Power Supply
- The SmbiosHandle parameter can be specified in either decimal or hexadecimal format. Use the '0x' prefix format for hexadecimal values.
- Internal commands:
 - :q ----- quit smbiosview
 - :0 ----- Change smbiosview display NONE info
 - :1 ----- Change smbiosview display OUTLINE info
 - :2 ----- Change smbiosview display NORMAL info
 - :3 ----- Change smbiosview display DETAIL info
 - /? ----- Show help

10.1.44 smbutil

EFI SMBUS Utility . NOT RECOMMENDED

Usage:

```
smbutil /rspd [/pec]
smbutil /rdbyte Address Length Command [/pec]
smbutil /rdword Address Length Command [/pec]
smbutil /rdblock Address Length Command [/pec]
smbutil /wtbyte Address Length Command /o FileName [/pec]
smbutil /wtword Address Length Command /o FileName [/pec]
smbutil /wtblock Address Length Command /o FileName [/pec]
smbutil /testrw Address Length Command /o TestFileName [/pec]
Address, Length, Command in HEX
```

Address is the device address on SMBUS

Length is the amount of data to transfer

Command is the offset to reach into the device



wbyte wword wblock will change and the EEPROM contents of the device. They are not RECOMMENDED and can cause a malfunction of the board.



testrw can corrupt the EEPROM contents of the device and can cause a malfunction of the board.

10.1.45 time

Displays or changes the current system time.

```
time [hh:mm[:ss]]
```

hh Hour of time to set, range: 0 - 23

mm Minute of time to set, range: 0 - 59

ss Second of time to set, range: 0 - 59



1. Hour and minute are required to set the time.
2. If second is not specified, 0 will be used as default.

10.2 Environment Variables

EFI shell allows user to set environment variables.

Actually, 3 environment variables are used on VX3030 board to control the behavior of EFI shell as described hereafter.

10.2.1 Bootcmd

The environment variable "bootcmd" allows user to run automatically a EFI command into EFI shell at startup of EFI shell without typing any command on keyboard.

> **Examples:**

1. To set bootcmd to run the "pci" command on EFI shell:

```
VX3030> set bootcmd "pci"
```

2. To check if the bootcmd variable is set on EFI shell:

```
VX3030> set  
bootcmd: pci
```

3. To clear the bootcmd variable on EFI shell:

```
VX3030> set -d bootcmd
```

10.2.2 StartupAuto

The environment variable "StartupAuto" allows user to run the EFI shell script file "startup.nsh" present for example on a USB Flash drive plugged on the board.

> **Examples:**

1. To set StartupAuto variable on EFI shell:

```
VX3030> set StartupAuto 1
```

2. To clear StartupAuto variable on EFI shell:

```
VX3030> set -d StartupAuto
```

10.2.3 StartupDelay

The environment variable "StartupDelay" allows user to set a timeout delay before running the EFI shell script file "startup.nsh" present for example on a USB Flash drive plugged on the board.

The value of "StartupDelay" is a number that represents a delay in seconds.

> **Examples:**

1. To set a 2 seconds delay in StartupDelay variable on EFI shell:

```
VX3030> set StartupDelay 2
```

2. To clear StartupDelay variable on EFI shell:

```
VX3030> set -d StartupDelay
```



By default, the startup delay before running the EFI shell script startup.nsh is equal to 5 seconds.

Chapter 11 - BIOS Versions Description

11.1 Recommendations and Known Limitations

1. Reserved Setup settings



All the settings that are not described in this documentation are reserved and should not be changed. Changing any of these settings may cause system dysfunction or failure.

2. After BIOS upgrades

It is recommended to turn the system off and do a fresh Cold Boot after upgrading the BIOS with the EFI shell “kflash” command or another utility.

3. Display Port hot plug

The BIOS does not support hot plug for Display Port. The user has to plug the Display Port device before switching the board on.

4. ACPI warnings under Linux OS

Some ACPI warnings are logged under the Linux Fedora operating system using the “dmesg” utility. Those messages are not errors and should be ignored.

5. PCI-Express Advanced Error Reporting (AER) are not supported

Currently, the BIOS does not implement AER for PEX 8609 devices in ACPI tables, and so, OSes cannot have this information.

6. “kflash” command limitation

The “-sp” option of the “kflash” command is used to preserve the BIOS parameters. However the boot devices order is not preserved by this option.

11.2 Known Problems Table

The following table lists the BIOS relative known problems.

11.2.1 How to use the table:

1. Get the BIOS ID associated to your board. Refer to Chapter 3 “Main Menu” page 4 of this document.
2. Check for a specific item in the table rows:
 - 2.1. A “x” (cross) in the BIOS ID column indicates this item applies to this BIOS release (problem is not solved).
 - 2.2. No “x” (cross) in the BIOS ID column indicates this item does not apply to this release (problem is fixed).
3. A full description associated to a specific problem is available in the next section.

Item	CRP	Description	BIOS ID E.C. Level								
			11328	12059	12149	12247	12304	13077	14247	15247	
1	3916	SATA speed for Gen1/Gen2_	X								
2	-	Double reset issue - Bugzilla 6492_	X								
3	-	UUID issues - Bugzilla 5731	X								
4	4020	Spurious Interrupts under VxWorks using IRQ#14 of CPLD	X	X							
5	4028	FDM-SATA-8GB not bootable in IDE bus mode	X	X	X	X					
6	4045	Switch PCIe PEX8609 is not seen sometimes under EFI shell_		X	X						
7	4072	CRT Hot Plug IRQ shared with USB IRQ causes USB 2.0 unworkable	X	X	X	X					
8	4126	Critical Temperature Status not properly managed at low temp	X	X	X	X	X				
9	-	The SATA speed Port 4 is set by default to 1.5 Gb/s for FDM-SATA device	X	X	X	X	X				
10	4231	kuuid command erases some setup parameters	X	X	X	X	X	X			
11	4295	Security password does not protect SETUP	X	X	X	X	X	X	X		
12	4296	K1 power management to be disabled for Ethernet 82577	X	X	X	X	X	X	X		

11.2.2 Detailed description of the problems

Item # 1 SATA speed for Gen1/Gen2 – CRP 3916

Description: Some hard disk devices are not correctly recognized by BIOS. BIOS has to implement a setup option to select the SATA speed between GEN1 and GEN2 in order to work-around this limitation in case of the HDD has no mean to select the speed itself, for example with SSD devices.

Workaround: In AHCI mode, usually operating system re-negotiate the SATA speed based on the capabilities registers. It is possible to force the SATA speed by using the `libata.force` option at the kernel command line to boot Linux.

Item # 2 Double Reset Issue - Bugzilla 6492

Description: The VX3030 CPU board is vulnerable to some reset timing. If a new reset occurs in a period from 5 to 8 seconds after the first one, the board will be put in a frozen state.

Workaround: The only solution is to power down the whole system then power it up again.

Item # 3 UUID Issues - Bugzilla 5731

Description: 1) `kuuid` with option `-r` (raw mode) does not preserve UUID value through reset.
2) the default UUID value displayed in setup is equal to the slot ID of the board.

Workaround: None

Item # 4 Spurious Interrupts under VxWorks using IRQ#14 of CPLD – CRP 4020

Description: For speeding up I2C access and decrease CPU load under VxWorks, CPLD has been modified to generate an IRQ#14 on signal SERIRQ on LPC bus of the PCH. With BIOS ID12059 and less, the SERIRQ mode is set to "Quiet Mode" by default in Setup: with this mode, spurious interrupts are generated on IRQ#12 and VxWorks hangs.

Workaround: Enter into BIOS Setup, move to Kontron Menu, select "PCI Configuration" item and set "SERIRQ CNT mode : " to [ENABLED]

Item # 5 FDM-SATA-8GB not bootable in IDE bus mode - CRP 4028

Description: The FDM-SATA-8GB is not bootable when the SATA interface is configured in IDE mode.

Workaround: Enter into BIOS Setup and configure the SATA interface in AHCI mode.

Item # 6 Switch PCIe PEX8609 is not seen sometimes under EFI shell - CRP 4045

Description: On BIOS VX3030 ID12059 and ID12149, sometimes, the PCIe switch PEX8609 is not seen with the 'pci' command under EFI shell. This is due to work-around for "Double-reset" issue (Bugzilla #6492) that skip the initialization of the CK505 clock after a warm reset but also skip the initialization for the PCIe switch PEX8609.

Workaround: None

Item # 7 CRT Hot Plug IRQ shared with USB IRQ causes USB 2.0 unworkable - CRP 4072

Description: When a CRT screen connector is attached/detached from the VPC_C board, the PCH generates an internal interrupt to VGA function inside the CPU which then triggers a real interrupt.

If there is no handler at OS level for this IRQ, one of the two ehci_hcd driver instances which share the same IRQ as the VGA function (#169 in our case) is killed which means that one of the two USB port (mostly the top one) becomes unworkable (only slow USB1.0 without IRQ).

Adding "no irqdebug" option to the kernel boot args enables the USB driver not to be killed but IRQs are generated which adds some noise to the system.

Workaround: A workaround is to use a "fix driver" which registers an handler on the VGA subsystem IRQ and then clears all those generated IRQs each time there are fired up.

BIOS add a new menu to solve this issue by disabling display hot plug IRQ (see section 6.3 page 42).

Item # 8 Critical Temperature Status not properly managed at low temp - CRP 4126

Description: 1- ACPI temperature overview:

The ACPI returns the CPU Temperature to the OS as follows:

- ▶ CPU Temperature is the maximum temperature of all CPU IA cores
- ▶ CPU Temperature may be obtained from multiple sources:

On Arrandale CPUs:

- ▶ Source 1: EC via PCH SMBus read if PCH SMBus thermal reporting is enabled
- ▶ Source 2: PCH MMIO Registers
- ▶ Source 3: Direct Comparison of CPU DTS temperature values from all Cores.

Source 1 and Source 2 need EC (Embedded Controller) that does not exist on our design. So, the only method is Source 3.

When Linux reaches the Critical Trip Point Critical, it initiates a shutdown,

Trip Point can be set to a default value by BIOS, it is set to 100°C in Setup.

This value is reported in ACPI under "Critical Trip Points" and for Arrandale CPU, this value is equal to 100°C.

2- Issue Analysis:

When the Processor is not able to perform the temperature computation or when the value is not valid, the ACPI returns to the OS a default value (Those default values are some 'defines' in the BIOS sources). This case occurs if the following MSR bits are reached those values:

- ▶ Case 1 : MSR 19Ch bit 31 = 0 => Reading Valid is not set

- ▶ Case 2 : MSR 19Ch bit 4 = 1 => Critical Temperature Status is set

The 'case 1' is a common problem below -15°C, we treated this issue during our board validation, all BIOS official release from ID11328 to ID12321 have the default value set to -56 °C.

The 'case 2' is not properly treated today, if this MSR bit is set, the temperature returned is 255°C, it is above the critical trip point, consequences: the OS initiates a shutdown.

Solution: BIOS returns - 56 °C as invalid temperature instead of 255°C for 'case 2'.

Workaround: None

Item # 9 The SATA speed Port 4 is set by default to 1.5 Gb/s for FDM-SATA device -

Description: Some SATA II 3Gb/s devices like FDM-SATA plugged on SATA Port #4 are not detected by BIOS.

Solution: Force SATA speed to GEN1 (1.5 Gb/s) on this port by default in setup.

Workaround: Set SATA speed for Port #4 to 1.5Gb/s for those devices (see section 6.2 page 41).

Item # 10 kuuid command erases some setup parameters - CRP 4231

Description: The EFI utility command "kuuid" with option -a for UUID in ASCII format or -r for UUID in RAW format is working correctly but has a side effect on the setup parameters in Kontron menu and Advanced -> CPU Configuration menu: all parameters values set previously in Kontron menu and CPU Configuration menu are lost due to bad pointer recopy during update of the setup UUID parameter. All values are reset to zero meaninging "Disabled" in terms of Setup value in most cases but for some parameters, it means anything else !

Solution: Use Setup for changing UUID or use workaround below after setting UUID with kuuid.

Workaround: Re-Enter all CPU configuration and Kontron parameters after doing kuuid utility command and save changes since the UUID is saved through reset and power cycle.

Item # 11 Security password does not protect SETUP - CRP 4295

Description: When the administrative password is set into BIOS SETUP the whole SETUP should be protected against modification when the password is not entered. This is not the case.

Workaround: None

Item # 12 K1 power management to be disabled for Ethernet 82577 - CRP 4296

Description: K1 power management mode on Ethernet 82577 can cause clock synchronization problem between MAC-PHY resulting in trouble to access PHY registers or packets lost.

Workaround: The K1 mode can be disabled into Ethernet driver under OS. This is done in most recent Linux OS version.

11.3 BIOS ID12304 VX3030 Release Notes

The identified or the fixed problems relative to this release are described in the section 11.2 “Known Problems Table” page 108.

The following lists the evolutions or enhancements relative to this release:

1. Watchdog under BIOS

The CPLD Watchdog function can be enabled with a configurable timeout value to control the OS boot.

The option is accessible in the Kontron/Board Misc Configuration menu under the BIOS Setup.

The watchdog timer is disabled by default.

Only the Reset mode is handled.



The watchdog setting is kept even after a timeout has occurred.

2. Azerty USB keyboard support

The USB French keyboard is now supported.

The option is accessible in the Kontron/USB Misc Configuration menu under the BIOS Setup.

The US keyboard is set by default.



Restriction: as only the English language is supported under BIOS, then accented characters are not managed. Moreover, the characters ° £ ¨ μ and § are not displayed either.

3. Support of new PXE version

The Legacy Option ROM for the i82580 (Barton Hills) has been updated.

This fixes a potential problem with the EEPROM reset.

11.4 BIOS ID13077 VX3030 Release Notes

The identified or the fixed problems relative to this release are described in the section 11.2 “Known Problems Table” page 108.

The following lists the evolutions or enhancements relative to this release:

1. Critical Temperature Status not correctly reported at low temperature

See detailed description of CRP 4126: Item # 8 page 110

2. The SATA speed of Port 4 is set by default to 1.5 Gb/s for FDM-SATA device

Some SATA II 3 Gb/s devices like FDM-SATA plugged on SATA Port #4 are not detected by BIOS. To be correctly detected, the SATA speed of the device is forced to 1.5 Gb/s.

11.5 BIOS ID14247 VX3030 Release Notes

The following lists the evolutions or enhancements relative to this release.

BIOS updates:

- ▶ **Fixed Bugzillas/CRP:**
 - ▶ CRP#4231/Bugzilla#7119: `kuuid` erases some setup parameters
 - ▶ Bugzilla#6437: routing Ethernet port on rear with `krcconfig` for RC class boards
 - ▶ Bugzilla#7069: COM2 programmation error in PEI phase
 - ▶ Bugzilla#7122: display UUID as defined in RFC4122 standard
 - ▶ Bugzilla#7128: `kmac` computes a bad checksum for `i82577`
 - ▶ Bugzilla#7137: adds VPX maskable reset propagation setting
 - ▶ Bugzilla#7139: Board config not applied immediately after setup is updated
 - ▶ Bugzilla#7140: `cpuutil` hangs EFI shell with no argument given and displays are "unknown" for cache descriptors
- ▶ **Enhancements:**
 - ▶ Updates Intel Microcode from 0x2 to 0x4 for Arrandale processor
 - ▶ Adds a mode to allow local reset propagation to VPX SYSRESET even if the board is not in slot 1

This release also includes the PBIT software(*) V2.5 ID14240 implementing the following evolutions:

- ▶ **Fixed Bugzillas:**
 - ▶ Bugzilla#6947: watchdog CPLD mode update with version ≥ 4
 - ▶ Bugzilla#7085: PBIT activation lost after RMA
 - ▶ Bugzilla#7096: `kdflag` clear system run if PBIT are disabled
 - ▶ Bugzilla#7126: PBIT edit system: edits problem with pci options `p` or `pa`
 - ▶ Bugzilla#7127: adds a mechanism to bypass PBIT from OS
 - ▶ Bugzilla#7132: PBIT learn system: the number of detected devices is not correct
 - ▶ Bugzilla#7133: PBIT edit system: if SMBUS is ignored, "unknown type dans constructeur" messages are displayed

(*) PBIT - Power on Built In Test - is a software developed by Kontron. It is an optional product. For more information, please contact your field representative.

11.6 BIOS ID15247 VX3030 Release Notes

The following lists the evolutions or enhancements relative to this release.

BIOS updates:

- ▶ **Fixed Bugzillas/CRP:**
 - ▶ CRP4295: Security password does not protect SETUP
 - ▶ CRP4296: K1 power management to be disabled for Ethernet 82577
- ▶ **Enhancements:**
 - ▶ Support new Flash N25Q032 and SST25VF032 in the same binary
 - ▶ Set default boot timeout to 0 instead of 2th of second



The BIOS flash write protect is only operational after the first power ON following the switch SW1-3 activation.

This release also includes the PBIT software^(*) V2.7 ID15244 implementing the following evolutions:

- ▶ Bug #7198: Problem with Cold/Warm Reset status, now recorded by CPLD
- ▶ Bug #7209: PBIT does not display the COM2 modem signal errors in complex mode
- ▶ CRP4294: PBIT Ethernet loopback test in complex mode on 82577 chip takes excessive time to execute on some VX3030

(*) PBIT - Power on Built In Test - is a software developed by Kontron. It is an optional product. For more information, please contact your field representative.

Chapter 12 - Use Cases

This chapter gives some advise for following practical cases:

- > DEPLOY : How to deploy VX3030 - BIOS, section 12.1 page 116
- > DEVEL: How to develop applications with VX3030 - BIOS, section 12.2 page 117
- > EVAL: How to benchmark VX3030 - BIOS, section 12.3 page 117
- > TROUBLESHOOT: How to troubleshoot VX3030 - BIOS, section 12.4 page 117

12.1 DEPLOY: How to deploy VX3030 - BIOS

Deploying with VX3030 boards usually requires to handle the following tasks:

- > Cloning a board,
- > Managing a pool of deployed boards.

12.1.1 Cloning a board:

To be able to replace a VX3030 with another one in a system, cloning allows to duplicate VX3030 settings in the new board prior to replacement. This is how to proceed with VX3030:

> On Original VX3030

Duplicate the hardware settings. (see VX3030 Users Documentation: chapter Configuration)

Duplicating BIOS settings:

BIOS and BIOS settings are stored in the BIOS FLASH device itself. See Annex A.3 of this document to know how to clone a BIOS ROM image.

> New VX3030

Check the Board EC level to insure the BIOS + Settings you are going to install are compatible with the hardware evolution.

See Annex A on how to program the new BIOS + settings.

Boot the board and set the Date Time to the correct date/time.

Now the new board is a functional clone of the initial VX3030.



Once the system has been qualified, it may be a good idea to save the image of the BIOS + Settings for later use.



In the case of removable storage like USB FLASH mezzanine or HDD fitted on the board, refer to VX3030 User's Guide (CA.DT.A87) for details of removal and fitting operations.



For large programs, Kontron can contribute with high level software to automate this cloning task. Contact support-kom-sa@kontron.com for details.

12.1.2 Managing a pool of VX3030:

To manage a pool of boards, the main task is to identify and track board using serial number, EC Level, BIOS version, MAC addresses, etc... possibly without having to take the system apart to look at its labels.

See chapter 2.2 of VX3030 User's Guide about the board identification labels.

See section 5.5 page 28 on VPD into SETUP Kontron Menu in this document on where to retrieve the board SN and EC level using the BIOS

See VPDTool in the Linux BSP document on how to get this information from a Linux OS running on the board.

The BIOS information is also transmitted from the BIOS to the OS using software table in memory, use the `dmi - decode` command to retrieve this information from Linux.



Kontron maintains a database of all boards sold to customers. This includes customer, program, system and any information you may wish to have maintained by us, allowing to retrieve an exact board pool status, whenever needed.

Contact support-kom-sa@kontron.com for details.

12.2 DEVEL: How to develop applications with VX3030 - BIOS

Developing applications requires numerous trials and errors, and sometimes power cycle. As the VX3030 is a small system on its own, here are some suggestions on how to organize your software development with VX3030. The final choice is yours, and depends on a large part of your laboratory infrastructure.

12.3 EVAL: How to benchmark VX3030 - BIOS

TBD

12.4 TROUBLESHOOT: How to troubleshoot VX3030 - BIOS

» SETUP not accessible

If setup is not accessible, make sure that the board operational in rescue mode (see VX3030 User'sGuide for Rescue Boot).

» SETUP accessible but OS not booting

If setup can be accessed, then enter setup (see chapter 2 page 2 "Accessing the Setup Menu") and check if the boot device is visible in the boot device list. See chapter 7 page 45 "Boot Method and Priority" in this document

Eventually restore default manufacturing setup configuration. See chapter 9 page 55 "Save and Exit Menu" to restore setup.

Appendix A - How to Update and Restore BIOS

A.1 Update BIOS from UEFI Shell using USB device

This section details the update of the AMI BIOS Firmware on a VX3030 board. An USB key with the BIOS image to flash will be used.

» Operating Mode

- > Copy the BIOS image under the USB device
- > Boot VX3030 on UEFI shell. If necessary enter BIOS SETUP with F2 in boot sequence. Then navigate to Save & Exit Menu and select UEFI shell in Boot override menu and boot under UEFI shell. Plug the USB device on the concerned USB interface
- > Enter command

```
map -r
```

- > fs0: file system must become visible, then Enter

```
fs0:
```

- > Eventually use cd command to reach a directory where the Bios image is stored. Use ls to display file list
If BIOS image is named VX3030_IDYYXXX.bin then flash the BIOS entering command

```
VX3030 > kflash -p -r VX3030_IDYYXXX.bin
```



Do not turn off nor reset the board until the end of the command. This prevent the system to boot at next power on.

- > Wait about 1 minutes and 30 seconds and check if message "image are equal" is displayed. If not, do again the flash update. When upgrade is finished without any errors, then turn off the system and do a fresh cold start in order to boot with the new BIOS.



The serial console displays a toolbar [=====] during Flash process to show the progression of the Flash update while the graphical screen not.

A.2 Restore or Update BIOS from Rescue BIOS

A rescue BIOS is available on any VX3030 CPU. It is possible to boot on rescue BIOS and update the main BIOS with the rescue BIOS.

When board is powered off, set micro switch SW2 function 1 to ON. Then Boot on Rescue BIOS and EFI-Shell. If necessary enter BIOS SETUP with F2 in boot sequence and then navigate to Save & Exit Menu and select UEFI shell in Boot override menu. Check if EFI-Shell prompt is VX3030-RESCUE.

- > Enter command:

```
VX3030-RESCUE> kflash -c
```



Do not power down the board during update process. This behavior will prevent the board to boot.

- > Wait about 1 minutes and 30 seconds the command end.
The BIOS is restored. Power off the board, set micro switch SW2 function 1 to Off then boot on Main BIOS.

A.3 Record BIOS image ROM and setting from UEFI Shell using USB device

This section details the record of the AMI BIOS Firmware and its setting of a VX3030 board. An USB key will be used to store the BIOS image

» Operating Mode

- > Boot VX3030 on UEFI shell. If necessary enter BIOS SETUP with F2 in boot sequence. Then navigate to Save & Exit Menu and select UEFI shell in Boot override menu and boot under UEFI shell. Plug the USB device on the concerned USB interface
- > Enter command

```
map -r
```

- > fs0: file system must become visible, then Enter

```
fs0:
```

- > Eventually use cd command to reach a directory where the Bios image is stored. Use ls to display file list
If BIOS image is named VX3030_CLONE.bin then copy the BIOS image entering command

```
VX3030> kflash -s VX3030_CLONE.bin
```

- > Wait 20 seconds. When finished without error then the BIOS ROM image is stored onto the USB device.

MAILING ADDRESS

Kontron Modular Computers S.A.S.
150 rue Marcelin Berthelot - BP 244
ZI TOULON EST
83078 TOULON CEDEX - France

TELEPHONE AND E-MAIL

+33 (0) 4 98 16 34 00
Sales: Order-ATD-Toulon@Kontron.com
Support: GSS-ATD-Toulon@Kontron.com

For further information about other Kontron products, please visit our Internet web site:
www.kontron.com.