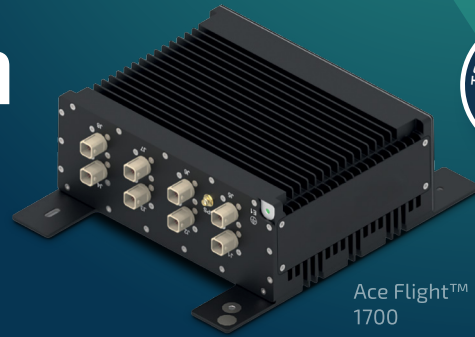


# AI-Ready and Edge Computing Platforms for the Intelligent Cabin

Delivering Smarter, Safer, More Personalized Air Travel



Ace Flight™ 4609



Ace Flight™ 1700



## Bring Intelligence Onboard

As aircraft become more connected, the ability to process data in real time is critical. The Ace Flight™ 4609 and Ace Flight™ 1700 enable edge AI capabilities directly onboard, allowing faster insights, smarter operations, and improved passenger experiences without relying on constant ground connectivity.

### ➤ High Compute Power

Advanced multi-core processing supports AI inference and data-intensive workloads at the edge.

### ➤ Low-Latency Processing

Enables real-time analytics for critical onboard applications.

### ➤ Flexible Integration

Easily integrates into existing IFE&C and avionics architectures.

### ➤ Scalable Architecture

Supports evolving AI workloads and future software enhancements.

### ➤ Edge Caching for Streaming Services

Store up to 64TB of content onboard to enable seamless streaming from leading platforms.



## Technical Specifications

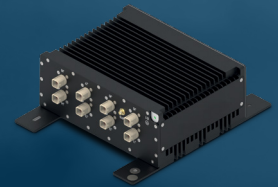
### Ace Flight™ 4609 EDGE CACHING SERVER

- › ARINC 600 4MCU air-flow-through design with front removable storage, DO-160G qualified and OEM line-fit ready
- › Intel® i7-1370PRE (14 cores) with 64GB DDR5 IB ECC RAM
- › Real-time, low-latency data processing for operational, network, and passenger applications
- › Support for Intel® AI acceleration technologies (OpenVINO™, DL Boost) for simplified integration
- › Integrated L2+ managed Ethernet switch providing 10 x 2.5GBase-T ports
- › 5G/LTE connectivity for global coverage



### Ace Flight™ 1700 EDGE AND AI-READY SERVER

- › Flange-mount, passive cooling high performance server
- › Intel® Core Ultra 7 Processor 366HRE (16 cores) with 64GB LPDDR5
- › Integrated AI accelerator NPU delivering up to 50 TOPS
- › Real-time inference for vision, NLP, and sensor data allowing aircraft systems to react instantly, improve operational efficiency and situational awareness
- › Compact, power-efficient edge deployment designed for space/power constrained environments, reducing integration complexity and operating costs
- › Integrated L2+ managed Ethernet switch with TSN capability providing 6 x 2.5GBase-T and 2 x 10GBase-T ports
- › 5G/LTE connectivity for global coverage
- › Xe3 GPU architecture optimized for memory-intensive AI workloads (~18GB), including multilingual LLMs and 4K video analytics.



## Trusted to Deliver

With over 30 years of experience and thousands of systems in operation globally, Kontron provides the foundation for secure, high-performance connectivity in mission-critical environments.