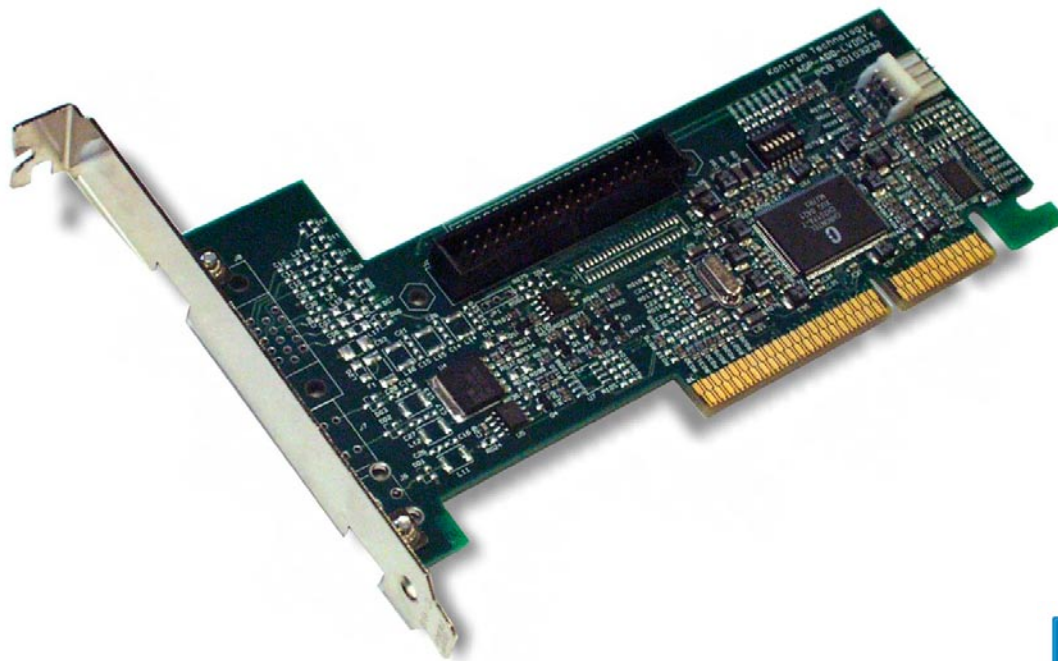


➤ ADD-LVDS

Dual Channel LVDS ADD-Card for AGP/DVO interface



- LVDS output through flexible FDC cable scheme
- LVDS resolution up to 2048 x 1536
- 24-bit color
- 1 or 2 bit per clock
- LCD VCC voltage 3.3V, 5V or 12V
- Build on Chrontel CH7017

➤ Technical Information

System	Confirms to Intel® defined ADD Interface, 2x DVO ports featuring up to 330MBit per second, Inserts into AGP connector in Intel® 845(GV)/855GME family based systems
Interface	LVDS in 34 Pin (2x17) 2.54mm pitch pin header
Resolution	LVDS up to 2048x1536
System requirements	886LCD/ATX(GV), 886LCD/ATXU(GV) and 886LCD-M series embedded motherboards

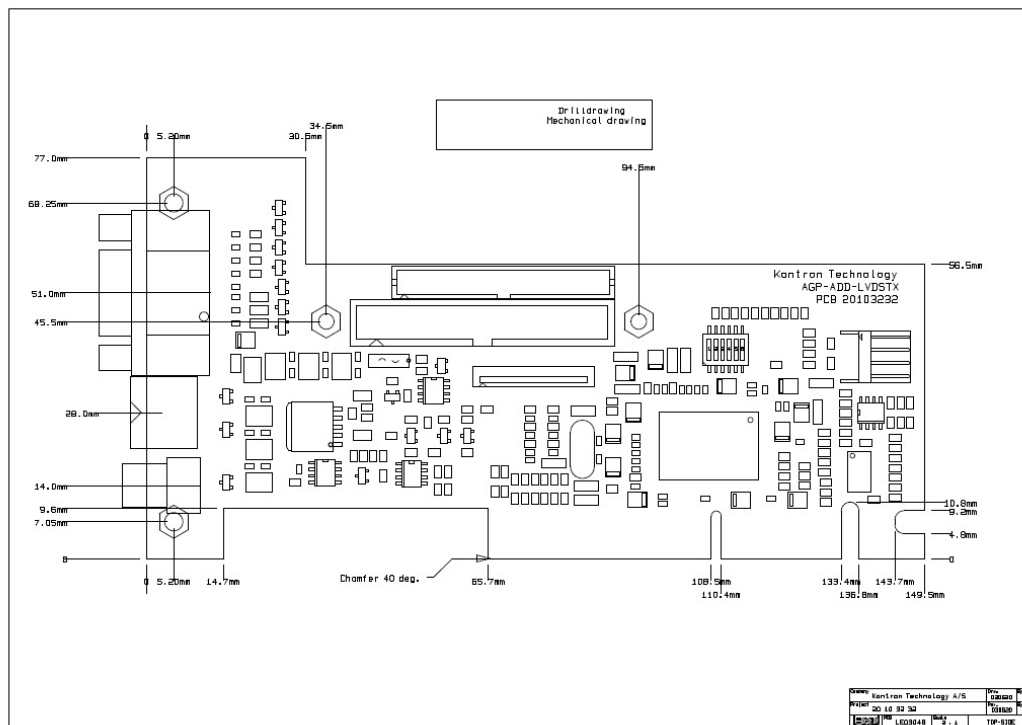
Cable options	LVDS-34pin mates to: Molex type 93-51-2343 for flat cable crimp (1 Amp/terminal), Molex 90160-0134 and 90119 for crimp terminals connection to flat cable
Support	Flat Panel adaptation and design in support
Temperature (*)	operating: 0° to 60° C
Dimension	120mm x 150mm (Standard height)

(*) see manual for details

➤ Ordering Information

Article	Part-No.	Description
ADD-LVDS	820935	ADD-LVDS Card for LVDS display

➤ Mechanical Drawing



➤ Corporate Offices

Europe, Middle East & Africa
Kontron AG
Oskar-von-Miller-Str. 1
85386 Eching/Munich
Germany
Tel.: +49 (0)8165/ 77 777
Fax: +49 (0)8165/ 77 219
sales@kontron.com

North America
Kontron America Corporate Office
14118 Stowe Drive
Poway, CA 92064-7147
USA
Tel.: +1 888 294 4558
Fax: +1 858 677 0898
sales@us.kontron.com

Asia Pacific
Kontron Asia Inc.
4F, No. 415, Ti-Ding Blvd.
Sec.2, NeiHu District
Taipei Taiwan 114
Tel.: +886-2-2799-2789
Fax: +886-2-2799-7399
sales@kontron.com.tw

Kontron Technology A/S
Dr. Neergaards Vej 5D
2970 Hørsholm
Denmark
Tel: +45 4576 1016
Fax: +45 4576 1017
motherboard@kontron.com