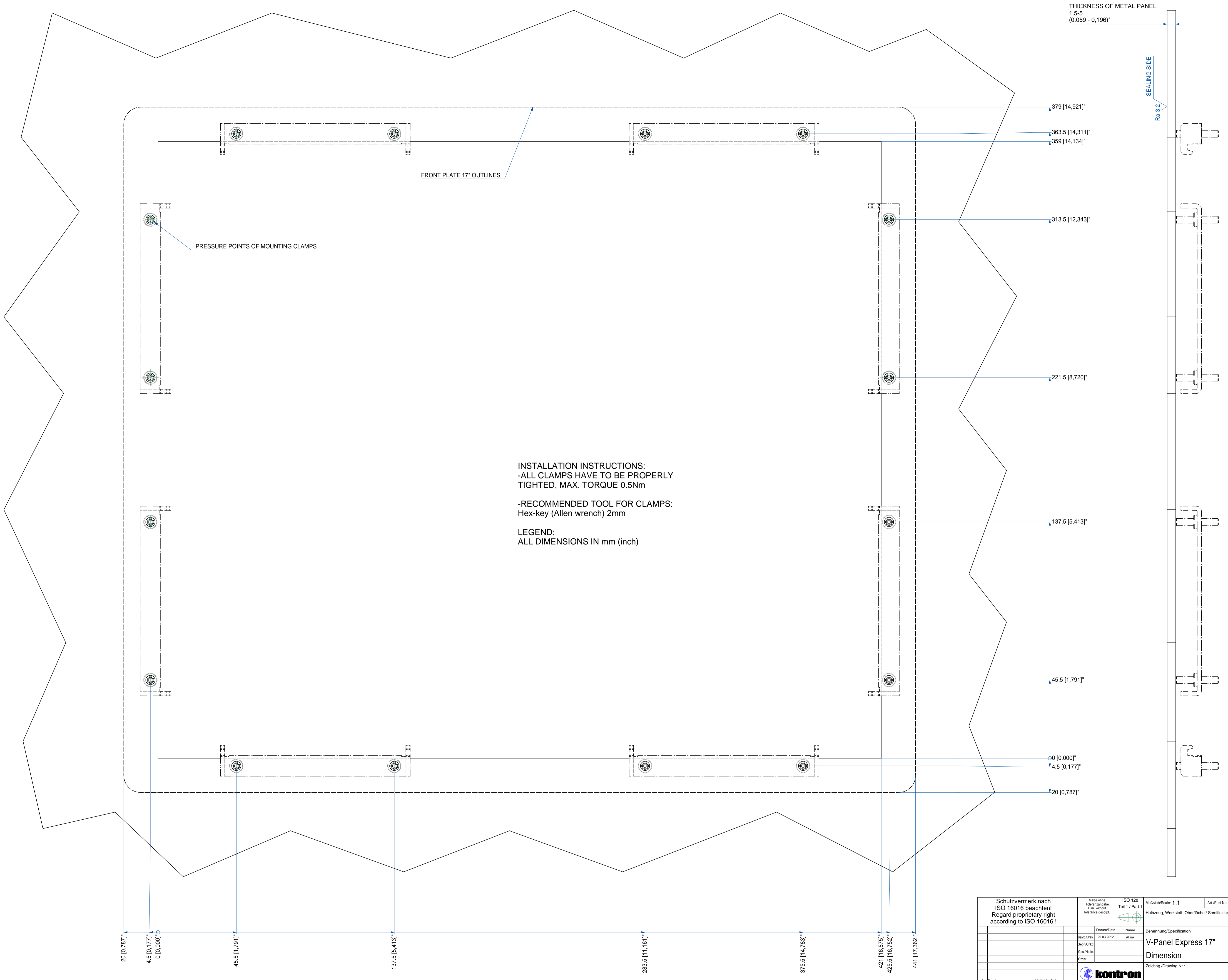


Schutzvermerk nach ISO 16016 beachten! Regard proprietary right according to ISO 16016 !		Maßstab/Scale: 1:2		Art./Part No.:
ISO 128 Teil 1 / Part 1		Halbzeug, Werkstoff, Oberfläche / Semifinished product, material, Surface finish		
Datum/Date: 29.03.2012		Name: AFink		Benennung/Specification: V-Panel Express 17"
Revis./Chng.: 01		Order:		Dimension
Zeichn./Drawing Nr.:		Blatt/Pg: 1 - 2		DIN A1
A First Issue		29.03.12 Fink		
Index	Änderung/Change	Datum/Date	Name	Order
CAD No.: T:\PROJEKTE\Misc\Design\Project\1010_V-Panel ET Express\Dimension V-Panel Express 17D_M_Front_ohne_Boden.de\Masse\Wegig [Kg]				



INSTALLATION INSTRUCTIONS:
 -ALL CLAMPS HAVE TO BE PROPERLY TIGHTED, MAX. TORQUE 0.5Nm
 -RECOMMENDED TOOL FOR CLAMPS:
 Hex-key (Allen wrench) 2mm
 LEGEND:
 ALL DIMENSIONS IN mm (inch)

- 20 [0,787]"
- 4.5 [0,177]"
- 0 [0,000]"
- 45.5 [1,791]"
- 137.5 [5,413]"
- 283.5 [11,161]"
- 375.5 [14,783]"
- 421 [16,575]"
- 425.5 [16,752]"
- 441 [17,362]"

THICKNESS OF METAL PANEL
 1.5-5
 (0.059 - 0.196)"

SEALING SIDE
 Ra 3.2

Schutzvermerk nach ISO 16016 beachten! Regard proprietary right according to ISO 16016 !		Maßstab/Scale: 1:1 Teil 1 / Part 1	Art./Part No.:
Datum/Date: 29.03.2012 Name: AFink	Benennung/Specification: V-Panel Express 17" Dimension		
Zeichnung/Drawing Nr.:			
A First issue 29.03.12 Fink		Blatt/Pg: 2 - 2 DIN A1	