

NOTE:

1. E=22-Ø1.2
2. Any foreign matters such as rust, contamina, dirt must not be attached.
3. This manufacturing process or handing of this material may require special health and/or safety precautions.
4. The slide of burrs of hemming of the circumference must be 10% of the board thickness.
5. Unless otherwise specified, the tolerance must be less ±0.15mm or less, angle must be ±5° or less.
6. Mark * : critical to function dimension.
7. Metal plate 0.7T

REV. NO.	CONTENTS OF CHANGE	MODIFIED BY	APPROVED BY	MM / DD / YYYY
				/ /
				/ /
				/ /
				/ /
				/ /

D

D

C

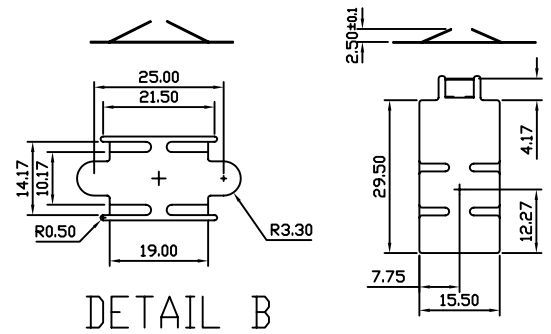
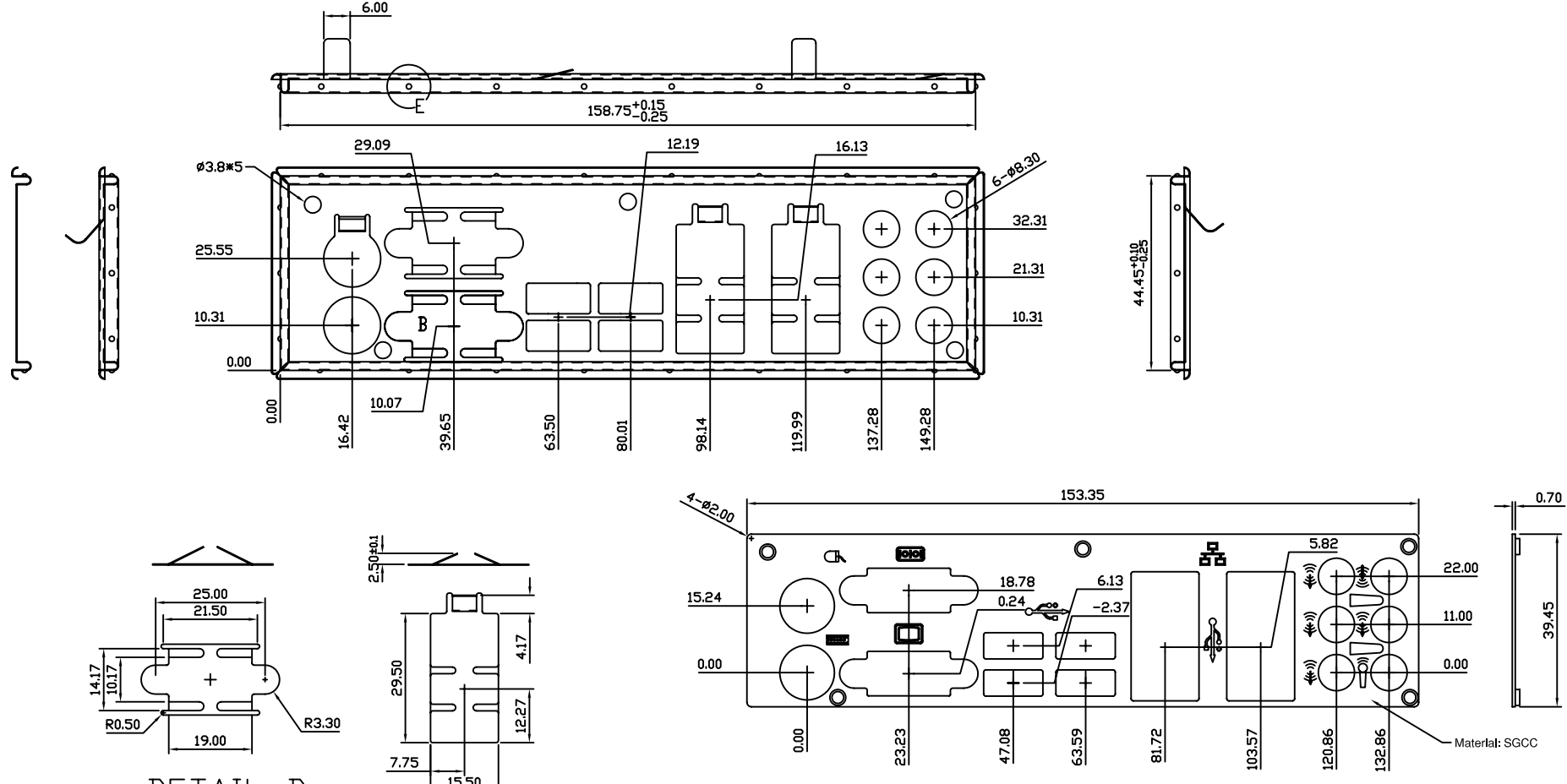
C

B

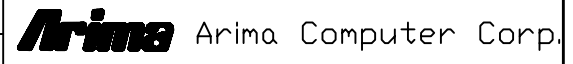
B

A

A



RANGE	TOL +	M1/IT10	M2/IT10	M3/IT12	M4/IT13	P1	P2	B/IT15	C/IT16	3RD ANGLE PROJECTION	FINISH	Release Level	Revision:	Version:
0~3	0.04	0.06	0.10	0.14	0.10	0.15	0.40	0.60	0.75	MATERIAL	SUS T=0.2	Part No.	S1755120G00008	
3~6	0.05	0.08	0.12	0.18	0.15	0.20	0.48	0.75	SCALE		Approved	—	Drawing Name	I/O Shield For KT965/FLEX CMK17
6~10	0.06	0.09	0.15	0.22	0.20	0.20	0.58	0.90	1.10	UNIT	Checked	—		
10~18	0.07	0.11	0.18	0.27	0.20	0.20	0.70	1.10	1.30		mm	Designed	Eva.Huang	
18~30	0.08	0.13	0.21	0.33	0.25	0.30	0.84	1.30	1.90	DATE				
30~50	0.10	0.16	0.25	0.39	0.30	0.40	1.00	1.60	2.50		2017/11/16			
50~80	0.12	0.19	0.30	0.46	0.40	0.50	1.20	1.90	3.20					
80~180	0.16	0.25	0.40	0.63	0.65	0.80	1.60	2.50	4.00					
180~315	0.21	0.32	0.52	0.81	0.80	1.00	2.10	3.20						
315~500	0.25	0.40	0.63	0.97	1.20	1.50	2.50	4.00						



Please, Don't measure dimension on drawing

FILE No.FILE_ NO.

SHEET 1 of 1