

QUICK MANUAL

Kontron WINCE 6.00 Image
for Micro Client II (M@CII) and MediClient with ETX-PM Modul

© Copyright 2008 Kontron Embedded Computers GmbH

All right are reserved

Release – 07/2008

| | | | |
|-----------------------------|---------------------------|----------|------------------------------------|
| Kontron vertraulich | Formularstand: 20.01.2006 | Dokument | CE60_Quick Manual_MC ETXPM_V01.doc |
| Erstellt: Helmut Ostermeier | Änderung: | Freigabe | Datum: 09.07.2008 Seite: 1 von 40 |

Revision History

| ChangeLog | | | |
|------------------|---|-------------|---------------|
| Rev | Description | Date | Author |
| 01 | Initial Release V01.00.02.07.2008.CE600.ETXPM.KEC.Microcli ent2 | 09.07.2008 | H Ostermeier |

Table of Contents

| | | |
|---------|---|------------------------------------|
| 1 | Preface | 7 |
| 2 | Features | 7 |
| 2.1 | Hardware | 8 |
| 2.1.1 | Microclient - adjustment COM1 to COM2..... | 8 |
| 3 | KEC features (Components – Platform Builder) | Fehler! Textmarke nicht definiert |
| 3.1 | CORE OS - CEBASE..... | Fehler! Textmarke nicht definiert. |
| 3.1.1 | Applications - End User | Fehler! Textmarke nicht definiert. |
| 3.1.2 | Applications and Services Development..... | Fehler! Textmarke nicht definiert. |
| 3.1.3 | Communication Services and Networking..... | Fehler! Textmarke nicht definiert. |
| 3.1.4 | Core OS Services | Fehler! Textmarke nicht definiert. |
| 3.1.5 | Device Management..... | Fehler! Textmarke nicht definiert. |
| 3.1.6 | File Systems and Data Store..... | Fehler! Textmarke nicht definiert. |
| 3.1.7 | Fonts..... | Fehler! Textmarke nicht definiert. |
| 3.1.8 | Graphics and Multimedia Technologies | Fehler! Textmarke nicht definiert. |
| 3.1.9 | International | Fehler! Textmarke nicht definiert. |
| 3.1.10 | Internet Client Services | Fehler! Textmarke nicht definiert. |
| 3.1.11 | Security..... | Fehler! Textmarke nicht definiert. |
| 3.1.12 | Shell and User Interface | Fehler! Textmarke nicht definiert. |
| 3.1.13 | Voice over IP Phone Services | Fehler! Textmarke nicht definiert. |
| 3.1.14 | Windows Embedded CE Error Reporting..... | Fehler! Textmarke nicht definiert. |
| 3.2 | BSP : Board support Package | Fehler! Textmarke nicht definiert. |
| 3.3 | Device Drivers / Third Party | Fehler! Textmarke nicht definiert. |
| 3.4 | Environment-Settings | Fehler! Textmarke nicht definiert. |
| 3.4.1 | Configuration Properties -> Locale..... | Fehler! Textmarke nicht definiert. |
| 3.4.2 | Configuration Properties -> Build Options | Fehler! Textmarke nicht definiert. |
| 3.4.3 | Configuration Properties -> Environments | Fehler! Textmarke nicht definiert. |
| 3.4.4 | Configuration Properties -> Custom Build Actions. | Fehler! Textmarke nicht definiert. |
| 3.4.5 | Configuration Properties -> Subproject Image Settings | Fehler! Textmarke nicht definiert. |
| 3.4.6 | .\Platform\Intel_CS\Intel_CS.bat | Fehler! Textmarke nicht definiert. |
| 3.4.7 | Environments | Fehler! Textmarke nicht definiert. |
| 3.4.7.1 | BSP_..... | Fehler! Textmarke nicht definiert. |
| 3.4.7.2 | IMG | Fehler! Textmarke nicht definiert. |
| 3.4.7.3 | J_CEPC | Fehler! Textmarke nicht definiert. |
| 3.4.7.4 | Project Environments | Fehler! Textmarke nicht definiert. |
| 3.4.7.5 | Sysgen | Fehler! Textmarke nicht definiert. |
| 3.4.8 | Ceconfig.h | Fehler! Textmarke nicht definiert. |
| 3.5 | Image Size | 8 |

- 4 Changes Fehler! Textmarke nicht definiert.
 - 4.1 Config.bib Fehler! Textmarke nicht definiert.
 - 4.2 platform.bib Fehler! Textmarke nicht definiert.
 - 4.3 platform.dat Fehler! Textmarke nicht definiert.
 - 4.4 platform.db Fehler! Textmarke nicht definiert.
 - 4.5 platform.reg Fehler! Textmarke nicht definiert.
 - 4.5.1 ;@Feature1 Hived Based Registry.....Fehler! Textmarke nicht definiert.
 - 4.5.2 ;@Feature2 Disable suspend.....Fehler! Textmarke nicht definiert.
 - 4.5.3 ;@Feature3 Set Folder Name (HDD).....Fehler! Textmarke nicht definiert.
 - 4.5.4 ;@Feature4 WVGA Resolution for ETX_LX Modul Fehler! Textmarke nicht definiert.
 - 4.5.4.1 ;@Feature5 Device drivers from AMD Webside for LX800.....Fehler! Textmarke nicht definiert.
 - 4.5.5 ;@Feature6 Remove IDE ICH2 setting otherwise Hive Based Registry didn't work Fehler! Textmarke nicht definiert.
 - 4.5.6 ;@Feature7 Error Reporting on Storage CardFehler! Textmarke nicht definiert.
 - 4.6 common.bib Fehler! Textmarke nicht definiert.
 - 4.7 common.db Fehler! Textmarke nicht definiert.
 - 4.8 common.dat Fehler! Textmarke nicht definiert.
 - 4.9 common.reg Fehler! Textmarke nicht definiert.
 - 4.10 Project.reg Fehler! Textmarke nicht definiert.
 - 4.10.1 ;@Feature1 ; Let Start/Settings/Control Panel Auto Expand. Fehler! Textmarke nicht definiert.
 - 4.10.2 ;@Feature2 Autostart BatchdateiFehler! Textmarke nicht definiert.
 - 4.10.3 ;@Feature3 PCAN Driver (SJA 1000)Fehler! Textmarke nicht definiert.
 - 4.10.4 ;@Feature4 Autohide the Taskbar and the Startmenu Fehler! Textmarke nicht definiert.
 - 4.10.5 ;@Feature5 RAS ConfigFehler! Textmarke nicht definiert.
 - 4.10.6 ;@Feature6 TSHARC Touchcontroller support USB/Serial.. Fehler! Textmarke nicht definiert.
 - 4.10.7 ;@Feature7 Softkeyboard - AZERTY Support Fehler! Textmarke nicht definiert.
 - 4.10.8 ;@Feature8 Intel LAN controller 82559ER.....Fehler! Textmarke nicht definiert.
 - 4.10.9 ;@Feature9 Start Menu IEFehler! Textmarke nicht definiert.
 - 4.10.10 ;@Feature10 FTP Root folderFehler! Textmarke nicht definiert.
 - 4.10.11 ;@Feature11 WebserverFehler! Textmarke nicht definiert.
 - 4.10.12 ;@Feature12 Desktop Logo Support (Kontron Logo) Fehler! Textmarke nicht definiert.
 - 4.10.13 ;@Feature13 CAN support SJA1000Fehler! Textmarke nicht definiert.
 - 4.10.14 ;@Feature14 ActiveSync over serial Port...Fehler! Textmarke nicht definiert.

4.10.15 ;@Feature15 J_CEPC_Extension (USB Handoff ; PCI Busmastering)
Fehler! Textmarke nicht definiert.

4.10.16 ;@Feature16 BSP_KEC_ETXPM_IEGD (IEGD GraphicDriver) **Fehler!
Textmarke nicht definiert.**

4.10.17 ;@Feature17 Include missing registry settings for Telnet support..... **Fehler!
Textmarke nicht definiert.**

4.10.18 ;@Featurex Remote Display **Fehler! Textmarke nicht definiert.**

4.11 Project.bib **Fehler! Textmarke nicht definiert.**

4.12 Project .dat **Fehler! Textmarke nicht definiert.**

4.13 Multilingual User Interface (optional)..... 9

4.13.1 MUI Module Creation **Fehler! Textmarke nicht definiert.**

4.13.2 Language Change 9

5 ActiveSync Connection 10

5.1 Null modem Pin Connetion 10

6 Make a Network connections 11

6.1.1 Set static IP Address..... 11

6.1.2 map a folder on the connected PC 11

6.1.3 Place of the shared resource..... 11

7 Configuration for download the CE-Image 12

7.1 BIOS Settings ETX-PM Modul (R127) 12

7.1.1 Main 13

7.1.1.1 Secondary Master 14

7.1.1.2 Primary Master /Secondary Master/Slave..... 15

7.1.2 Advanced 16

7.1.2.1 Advanced Chipset Control 17

7.1.2.2 PCI/PNP Configuration..... 18

7.1.2.2.1 PCI Device, Slot #1 / #2 / #3 /#4..... 19

7.1.2.2.2 PCI/PNP ISA UMB Region Exclusion 20

7.1.2.2.3 PCI/PNP ISA IRQ Resource Exclusion 21

7.1.2.3 Memory Cache 22

7.1.2.4 I/O Device Configuration..... 23

7.1.2.4.1 USB Options 24

7.1.2.4.2 LAN Options 24

7.1.2.4.3 SIO Options..... 25

7.1.2.5 Keyboard Features..... 25

7.1.2.6 Hardware Monitor 26

7.1.2.7 Watchdog Settings..... 26

7.1.2.8 Display Control..... 27

7.1.2.9 Miscellaneous..... 28

7.1.3 Security 29

7.1.4 Power..... 30

7.1.4.1 Thermal Management..... 31

| | | |
|----------|---|----|
| 7.1.4.2 | Wake Up Events | 31 |
| 7.1.5 | Boot..... | 32 |
| 8 | Registry | 33 |
| 8.1 | Regsave.exe | 33 |
| 8.2 | Registry folder | 33 |
| 8.3 | FAQ | 33 |
| 9 | Touch calibration | 34 |
| 10 | Autostart applications | 34 |
| 10.1 | Startup.bat..... | 34 |
| 11 | IE in KIOSmode (optional) | 35 |
| 11.1 | Enable the KIOSKmode | 35 |
| 11.2 | Disable the KIOSKmode | 35 |
| 12 | Version check | 35 |
| 13 | Remote Display (From PC -> to WINCE Target) optional..... | 36 |
| 14 | Server | 37 |
| 14.1 | RAS Server | 37 |
| 14.1.1 | HOWTO Configure the RAS Server..... | 37 |
| 14.1.1.1 | RAS Server-Settings | 37 |
| 14.1.1.2 | Line-Settings | 38 |
| 14.1.2 | Start / Stop the RAS server | 38 |
| 14.2 | Webserver (HTTP Server) (optional) | 39 |
| 15 | FAQ | 39 |
| 15.1 | Autostart the Remote Desktop (with passwort) (optional)..... | 39 |
| 15.2 | Howto change the Resolution..... | 40 |

1 Preface

The document described the Feature, Adjustment to develop a WINCE 6.00 Image for the Microclient II with ETX-PM Modul

2 Features

- **On-Board Hardware Support**
 - COM Ports
 - USB port
 - Ethernet connection
 - VGA output,
 - Flat panel interface
- **Storage Devices**
 - **Compactflash**
- **User Interface**
 - PS/2 Mouse + PS/2 Keyboard
 - USB Mouse + USB Keyboard
 - Touch
- **Communication Services and Networking**
 - Wired LAN 802.3
 - Dial-up networking
 - Telnet server
 - FTP server
 - Web server
 - Active Sync
- **Application**
 - **Internet Explorer 6.0 (kioskmode – iefull.exe)**
 - **Wordpad**
 - **Startup Applikationen**
 - **Compact Framework Modul**
 - **Remote Desktop**
 - **Softkeyboard**
- **Data store**
 - **Hive-based registry (Persistent) -> Regsav.exe**
- **Languages**
 - English, german

2.1 Hardware

2.1.1 Microclient - adjustment COM1 to COM2

| Serial Interface | Address | IRQ | Device |
|------------------|---------|-----|-------------|
| COM1 | 0x3F8 | 4 | Active Sync |
| COM2 | 0x2F8 | 3 | |

2.2 Image Size

Release: ca 29 MB -> Platform Builder

2.3 Multilingual User Interface (optional)

Description of implement the Multilingual User Interface with Languages German and English

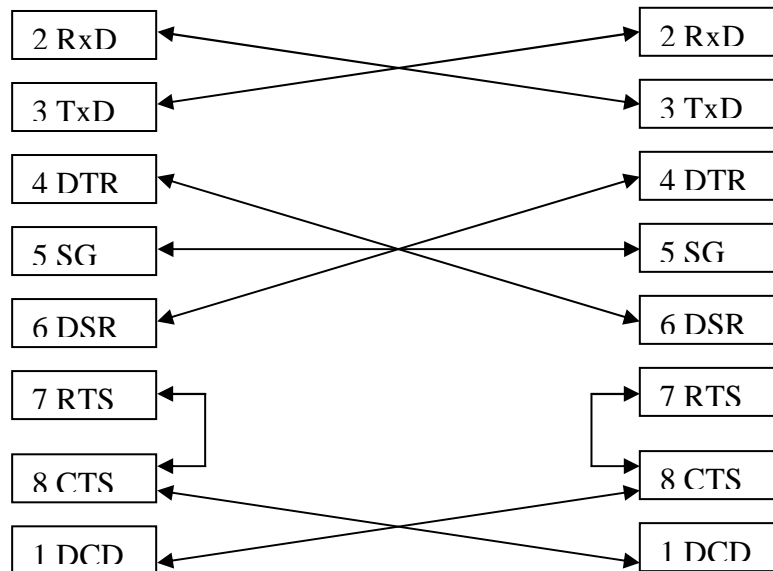
2.3.1 Language Change

- 1) Boot System
- 2) Click **Start** -> **Settings** -> **Control panel**
- 3) double click **Regional Settings**
- 4) Change “User Interface Language” to German or English
- 5) Press OK
- 6) On Desktop launch “ **Regsave**” in order to save the settings
- 7) Reboot System in order to activate new languages

3 ActiveSync Connection

- Connect target and development PC with null modem cable
- WinCE – Target -> launch Repllog.exe .
- Development PC -> launch Active Sync

3.1 Null modem Pin Connetion



4 Make a Network connections

Settings were saved persistent on CF by launch the regsave.exe (Hived based registry)

DK – double Click

4.1.1 Set static IP Address

- 1) Start -> Settings -> Network and Dial-up Connections
- 2) DK on PCI – RT81391
- 3) click “ Specify an IP address “
- 4) set IP- Address
 - a. for example IP-address: 192.168.0.6, Subnet Mask : 255.255.255.0
- 5) click OK

4.1.2 map a folder on the connected PC

- 1) Start -> RUN click
- 2) Set CMD
- 3) net view <Computername>
- 4) set user name and password !!!
- 5) net use * [\\Remote name\Local name](#)

4.1.3 Place of the shared resource

- 1) Start -> Programs -> Windows Explorer
- 2) Click Network
- 3) -> shared folder

5 Configuration for download the CE-Image

5.1 BIOS Settings ETX-PM Modul (R127)

Note:

- The most important Settings are marked blue !!!!
- Settings after copy the CE-Images
- Press „F2,, Key as long as booting the BIOS-setup starts

5.1.1 Main

| PhoenixBIOS Setup Utility | | | | | | |
|---------------------------|------|----------|---------------|-------------|-------------------|--------------------|
| Info | Main | Advanced | Security | Power | Boot | Exit |
| System Time | | | | Xxxxxx | | Item Specific help |
| System Date | | | | Xxxxxx | | |
| Legacy Diskette A: | | | | [Disabled] | | |
| Legacy Diskette B: | | | | [Disabled] | | |
| > Primary Master | | | | [CF card] | | |
| > Primary Slave | | | | [xxxxxx] | | |
| > Secondary Master | | | | [] | | |
| > Secondary Slave | | | | [xxxxxxx] | | |
| SMART Device Monitoring | | | | [Enabled] | | |
| System Memory | | | | Xxxxx | | |
| Extended Memory | | | | Xxxxx | | |
| BIOS Date | | | | 06/25/07 | | |
| F1 Help | | ↑ ↓ | : Select Item | -/+ | Change Value | F9 Setup Defaults |
| Esc Exit | | | Select Menu | Enter | Select > Sub-Menu | F10 Save and Exit |

5.1.1.1 Secondary Master

| PhoenixBIOS Setup Utility | |
|--|--------------------|
| Main | |
| Primary Master / Primary Slave | Item Specific help |
| Type [Auto] | |
| Multi-Sector Transfer : [16 Sectors] | |
| LBA Mode Control : [Enabled] | |
| 32 Bit I/O [Disabled] | |
| Transfer Mode : [FPIO 4 / DMA 2] | |
| Ultra DMA Mode: [Disabled] | |
| SMART Monitoring : Disabled | |
| F1 Help ↑↓ : Select Item -/+ Change Value F9 Setup Defaults | |
| Esc Exit Select Menu Enter Select > Sub-Menu F10 Save and Exit | |

5.1.2 Advanced

| PhoenixBIOS Setup Utility | | | | | | |
|---|------|----------|---------------|-------|--------------------|-------------------|
| Info | Main | Advanced | Security | Power | Boot | Exit |
| Setup Warning | | | | | Item Specific help | |
| Setting items on this menu to incorrect values may cause your system to malfunction | | | | | | |
| > Advanced Chipset Control > PCI/PNP Configuration > Memory Cache > I/O Device Configuration > Keyboard Features > Hardware Monitor > Watchdog Settings > Display Control > Miscellaneous | | | | | | |
| F1 | Help | ↑ ↓ | : Select Item | -/+ | Change Value | F9 Setup Defaults |
| Esc | Exit | | Select Menu | Enter | Select > Sub-Menu | F10 Save and Exit |

5.1.2.1 Advanced Chipset Control

| PhoenixBIOS Setup Utility | |
|--|--------------------|
| Advanced | |
| Advanced Chipset Control | Item Specific help |
| Enable Memory Gap [Disabled] | |
| Graphics Engine 1 [Enabled] | |
| Graphics Engine 2 [Enabled] | |
| Graphics Memory [UMA=8MB] | |
| Graphics Aperture [256MB] | |
| Assign IRQ to VGA [Enabled] | |
| Serial Interrupt Mode [Quiet] | |
| F1 Help ↑↓ : Select Item -/+ Change Value F9 Setup Defaults Esc Exit Select Menu Enter Select > Sub-Menu F10 Save and Exit | |

5.1.2.2 PCI/PNP Configuration

| PhoenixBIOS Setup Utility | |
|--------------------------------------|---|
| Advanced | |
| PCI Configuration | Item Specific help |
| PNP OS Installed | [No] |
| Reset Configuration Data | [No] |
| Secured Setup Configuration | [Yes] |
| > PCI Device, Slot #1 | |
| > PCI Device, Slot #2 | |
| > PCI Device, Slot #3 | |
| > PCI Device, Slot #4 | |
| PCI IRQ line 1: | [Auto Select] |
| PCI IRQ line 2: | [Auto Select] |
| PCI IRQ line 3: | [Auto Select] |
| PCI IRQ line 4: | [Auto Select] |
| Onboard LAN IRQ line | [Auto Select] |
| Onboard USB IRQ line | [Auto Select] |
| > PCI/PNP ISA UMB Region Exclusion | |
| > PCI/PNP ISA IRQ Resource Exclusion | |
| Default Primary Video Adapter | [AGP] |
| Assign IRQ to SMB | [Enabled] |
| F1 Help | ↑↓ : Select Item -/+ Change Value F9 Setup Defaults |
| Esc Exit | Select Menu Enter Select > Sub-Menu F10 Save and Exit |

5.1.2.2.1 PCI Device, Slot #1 / #2 / #3 / #4

| PhoenixBIOS Setup Utility | |
|--|--------------------|
| Advanced | |
| PCI Device, Slot #1 / #2 / #3 / #4 | Item Specific help |
| Option ROM Scan: [Enabled] | |
| Enable Master: [Disabled] | |
| Latency Timer: [Default] | |
| F1 Help ↑↓ : Select Item -/+ Change Value F9 Setup Defaults Esc Exit Select Menu Enter Select > Sub-Menu F10 Save and Exit | |

5.1.2.2.2 PCI/PNP ISA UMB Region Exclusion

| PhoenixBIOS Setup Utility | |
|--|--------------------|
| Advanced | |
| PCI/PNP ISA UMB Region Exclusion | Item Specific help |
| C000 – CFFF | [Available] |
| D000 – D3FF | [Available] |
| D400 – D7FF | [Available] |
| D800 – DBFF | [Available] |
| DC00 – DFFF | [Available] |
| F1 Help ↑↓ : Select Item -/+ Change Value F9 Setup Defaults Esc Exit Select Menu Enter Select > Sub-Menu F10 Save and Exit | |

5.1.2.2.3 PCI/PNP ISA IRQ Resource Exclusion

| PhoenixBIOS Setup Utility | |
|--|--------------------|
| Advanced | |
| PCI/PNP ISA IRQ Resource Exclusion | Item Specific help |
| IRQ 3: [Available] | |
| IRQ 4: [Available] | |
| IRQ 5: [Available] | |
| IRQ 7: [Available] | |
| IRQ 9: [Available] | |
| IRQ 10: [Reserved] | |
| IRQ 11: [Available] | |
| IRQ 12: [Available] | |
| F1 Help ↑↓ : Select Item -/+ Change Value F9 Setup Defaults Esc Exit Select Menu Enter Select > Sub-Menu F10 Save and Exit | |

5.1.2.3 Memory Cache

| PhoenixBIOS Setup Utility | |
|---|--------------------|
| Advanced | |
| Memory Cache | Item Specific help |
| Memory Cache: [Enabled] | |
| Cache System BIOS area: [Write Protect] | |
| Cache Video BIOS area: [Write Protect] | |
| Cache Base 0 – 512k [Write Back] | |
| Cache Base 512 – 640k [Write Back] | |
| Cache Extended Memory Area : [Write Back] | |
| Cache D000 – D3FF: [Disabled] | |
| Cache D400 – D7FF: [Disabled] | |
| Cache D800 – DBFF: [Disabled] | |
| Cache DC00 – DFFF: [Disabled] | |
| F1 Help ↑↓ : Select Item -/+ Change Value F9 Setup Defaults Esc Exit Select Menu Enter Select > Sub-Menu F10 Save and Exit | |



5.1.2.4 I/O Device Configuration

| PhoenixBIOS Setup Utility | |
|-------------------------------------|---|
| Advanced | |
| I/O Device Configuration | Item Specific help |
| Local Bus IDE adapter: [Both] | |
| Primary IDE UDMA66/100: [Enabled] | |
| Secondary IDE UDMA66/100: [Enabled] | |
| > USB Options | |
| AC97 Audio controller: [Enabled] | |
| > LAN Options | |
| > SIO Options | |
| F1 Help | ↑↓ : Select Item -/+ Change Value F9 Setup Defaults |
| Esc Exit | Select Menu Enter Select > Sub-Menu F10 Save and Exit |



5.1.2.4.1 USB Options

| PhoenixBIOS Setup Utility | |
|---|--------------------|
| Advanced | |
| USB Options | Item Specific help |
| USB UHCI Host Controller 1: [Enabled] | |
| USB UHCI Host Controller 2: [Enabled] | |
| USB EHCI Host Controller : [Enabled] | |
| Legacy USB Support: [Enabled] | |
| EHCI Legacy Support: [Enabled] | |
| F1 Help ↑↓ : Select Item -/+ Change Value F9 Setup Defaults Esc Exit Select Menu Enter Select > Sub-Menu F10 Save and Exit | |

5.1.2.4.2 LAN Options

| PhoenixBIOS Setup Utility | |
|---|--------------------|
| Advanced | |
| LAN Options | Item Specific help |
| LAN MAC address (ETH1): Xxxxxxx | |
| Onboard LAN Controller [Enabled] | |
| Onboard LAN PXE ROM: [Disabled] | |
| Enable WOL [OS control] | |
| F1 Help ↑↓ : Select Item -/+ Change Value F9 Setup Defaults Esc Exit Select Menu Enter Select > Sub-Menu F10 Save and Exit | |



5.1.2.4.3 SIO Options

| PhoenixBIOS Setup Utility | |
|---|--------------------|
| Advanced | |
| SIO Options | Item Specific help |
| Serial port A: [Enabled] | |
| Base I/O address [3F8] | |
| Interrupt: [IRQ 4] | |
| Serial port B: [Enabled] | |
| Mode: [Normal] | |
| Base I/O address: [2F8] | |
| Interrupt: [IRQ 3] | |
| Onboard LPT [Disabled] | |
| F1 Help ↑↓ : Select Item -/+ Change Value F9 Setup Defaults Esc Exit Select Menu Enter Select > Sub-Menu F10 Save and Exit | |

5.1.2.5 Keyboard Features

| PhoenixBIOS Setup Utility | |
|---|--------------------|
| Advanced | |
| Keyboard Features | Item Specific help |
| NumLock: [Auto] | |
| Key Click: [Disabled] | |
| Keyboard auto-repeat rate: [30/sec] | |
| Keyboard auto-repeat delay: [1/2 sec] | |
| F1 Help ↑↓ : Select Item -/+ Change Value F9 Setup Defaults Esc Exit Select Menu Enter Select > Sub-Menu F10 Save and Exit | |

5.1.2.6 Hardware Monitor

| PhoenixBIOS Setup Utility | |
|--|--------------------|
| Advanced | |
| Hardware Monitor | Item Specific help |
| VCC 3.3V Voltage = | XXXX |
| CPU Core Voltage = | XXXX |
| 5Vsb Voltage = | XXXX |
| Battery Voltage = | XXXX |
| CPU Temperature = | XXXX |
| CPU Fan Speed | No Function |
| F1 Help ↑↓ : Select Item -/+ Change Value F9 Setup Defaults Esc Exit Select Menu Enter Select > Sub-Menu F10 Save and Exit | |

5.1.2.7 Watchdog Settings

| PhoenixBIOS Setup Utility | |
|--|--------------------|
| Advanced | |
| Watchdog Settings | Item Specific help |
| Mode : | [Disabled] |
| F1 Help ↑↓ : Select Item -/+ Change Value F9 Setup Defaults Esc Exit Select Menu Enter Select > Sub-Menu F10 Save and Exit | |



5.1.2.8 Display Control

| PhoenixBIOS Setup Utility | |
|---|--------------------|
| Advanced | |
| Display Control | Item Specific help |
| Display Mode: [CRT+LFP] | |
| JDA Revision: 1.5 | |
| Flat Panel Type: [SVGA 1x18] *) | |
| Flat Panel Scaling [Stretched] | |
| Flat Panel Backlight: [128] | |
| Default Primary Video Adapter [AGP] | |
| Assign IRQ to VGA [Enabled] | |
| F1 Help ↑↓ : Select Item -/+ Change Value F9 Setup Defaults Esc Exit Select Menu Enter Select > Sub-Menu F10 Save and Exit | |

*) dependent from the supported Panel resolution



5.1.2.9 Miscellaneous

| PhoenixBIOS Setup Utility | |
|--|--------------------|
| Advanced | |
| Miscellaneous | Item Specific help |
| Floppy check: [Disabled] | |
| Summary screen: [Disabled] | |
| QuickBoot Mode: [Enabled] | |
| Extended Memory Testing: [Just zero it] | |
| Dark Boot: [Disabled] | |
| Halt on Errors: [No] | |
| PS2 Mouse: [Auto Detect] | |
| Large Disk Access Mode: [DOS] | |
| Spread Spectrum [Disabled] | |
| F1 Help ↑↓ : Select Item -/+ Change Value F9 Setup Defaults Esc Exit Select Menu Enter Select > Sub-Menu F10 Save and Exit | |



5.1.3 Security

| PhoenixBIOS Setup Utility | | | | | | |
|---------------------------|------|----------|-----------------|------------|-------------------|--------------------|
| Info | Main | Advanced | Security | Power | Boot | Exit |
| | | | | | | Item Specific help |
| Supervisor Password Is: | | | | Clear | | |
| User Password IS: | | | | Clear | | |
| Set Supervisor Password | | | | [Enter] | | |
| Set User Password | | | | [Enter] | | |
| Fixed disk boot sector: | | | | [Normal] | | |
| Virus check reminder | | | | [Disabled] | | |
| System backup reminder | | | | [Disabled] | | |
| Password on boot: | | | | [Disabled] | | |
| Password on bootmenu: | | | | [Disabled] | | |
| F1 | Help | ↑ ↓ | : Select Item | -/+ | Change Value | F9 Setup Defaults |
| Esc | Exit | | Select Menu | Enter | Select > Sub-Menu | F10 Save and Exit |



5.1.4 Power

| PhoenixBIOS Setup Utility | | | |
|---------------------------|------|---------------|---------------------------------|
| Info | Main | Advanced | Security Power Boot Exit |
| | | | Item Specific help |
| Enable ACPI | | | [No] |
| > Thermal Management | | | |
| Power Savings | | | [Disabled] |
| Hard Disk Timeout | | | [Disabled] |
| > Wake Up Events | | | |
| Resume On Modem Ring: | | | [Off] |
| Resume On Time: | | | [Off] |
| Resume Time: | | | [00:00:00] |
| Power Supply | | | [AT] |
| Power Base Function | | | [Power Off] |
| Power Loss Control | | | [Power On] |
| F1 Help | ↑ ↓ | : Select Item | -/+ Change Value |
| Esc Exit | | Select Menu | Enter Select > Sub-Menu |
| | | | F9 Setup Defaults |
| | | | F10 Save and Exit |

5.1.4.1 Thermal Management

| PhoenixBIOS Setup Utility | |
|---|---|
| Power | |
| Thermal Management | Item Specific help |
| Automatic Thermal Control Circuit [TM1] | |
| F1 Help | ↑↓ : Select Item -/+ Change Value F9 Setup Defaults |
| Esc Exit | Select Menu Enter Select > Sub-Menu F10 Save and Exit |

5.1.4.2 Wake Up Events

| PhoenixBIOS Setup Utility | |
|--|---|
| Power | |
| Wake Up Events | Item Specific help |
| Wake on Mouse activity [Enabled] | |
| Wake on Keyboard activity [Enabled] | |
| Wake on Serial Port A activity [Enabled] | |
| Wake on Serial Port B activity [Enabled] | |
| F1 Help | ↑↓ : Select Item -/+ Change Value F9 Setup Defaults |
| Esc Exit | Select Menu Enter Select > Sub-Menu F10 Save and Exit |

5.1.5 Boot

| PhoenixBIOS Setup Utility | | | | | | |
|--|------|----------|---------------|-------|-------------------|--------------------|
| Info | Main | Advanced | Security | Power | Boot | Exit |
| | | | | | | Item Specific help |
| Boot priority order: 1: USB KEY 2: IDE 0 3: IDE 1 4: USB CDROM 5: USB HDD 6: 7: 8: | | | | | | |
| Excluded from boot order: IDE 0: IDE 1: IDE 3: : USB FDC: : USB ZIP: : USB LS120: : PCI BEV: : PCI SCSI: : IDE CD: : Bootable Add-in Cards | | | | | | |
| F1 | Help | ↑ ↓ | : Select Item | -/+ | Change Value | F9 Setup Defaults |
| Esc | Exit | | Select Menu | Enter | Select > Sub-Menu | F10 Save and Exit |

6 Registry

There is a hived based registry for the persistent Registry in the WINCE Image. The Registry with the User Settings is saved on the Storage device!

6.1 Regsave.exe

Launch this File the Registry changes were saved on the Storage Device. Do you not launch regsave.exe after make settings the changes will be lost if you make a reboot.

6.2 Registry folder

The registry saved under following path

C:\Registry\System.hv
C:\Registry\User.mky
C:\Registry\User\User.hv

6.3 FAQ

Problem: System boots not correct after a faulty registry !!!

- 1) Press "Shift" immediately and always after Power ON
- 2) Launch Cleanreg.bat -> Registry is deleted !!
- 3) Reboot
- 4) The Registry with the original settings were saved on the storage device !!!
Note: preceding settings were lost

9 IE in KIOSmode (optional)

You can start the Panel in IE KIOSK mode ! After Booting the WINCE target the ie will be launched in KIOS mode !

9.1 Enable the KIOSKmode

- 1) Booting the wince image of the CE - target !
- 2) Launch regsave on the desktop
- 3) Press the “IE Kioskmode” button
- 4) The target is making a reboot and start the IE in kioskmode

9.2 Disable the KIOSKmode

- Booting the wince image of the CE – target!
- Move the mousecursor to the below border of the Panel -> Taskbar will be shown
- Press the “show Desktop” button (right below)
- Launch regsave on the desktop
- Press “IE Normal” button
- The target is making a reboot and start WINCE in “normal” mode

10 Version check

You can distinguish the WINCE Build version of the image with version.exe

- press “Start” -> press “RUN” -> In the Open field type “version.exe”
- A version String will be shown

| | | | | | | | |
|---------------------|-------------|---------------------------|--|----------|--------|------------------------------------|------------------|
| Kontron vertraulich | | Formularstand: 18.11.2005 | | Dokument | | CE60_Quick Manual_MC ETXPM_V01.doc | |
| Erstellt: | HOstermeier | Änderung: | | Freigabe | Datum: | 12.06.2008 | Seite: 35 von 40 |

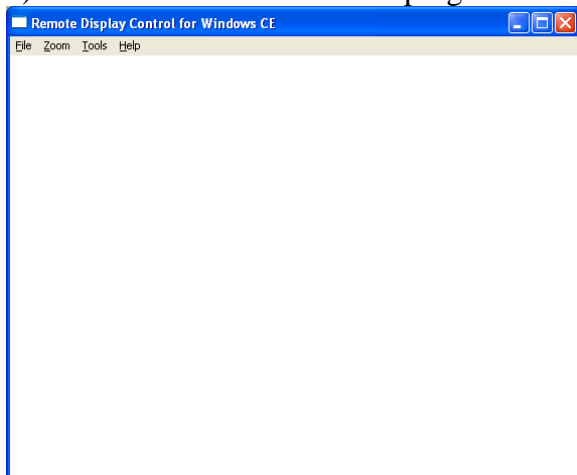
11 Remote Display (From PC -> to WINCE Target) optional

HOST Programm: cerhost.exe (windows XP)

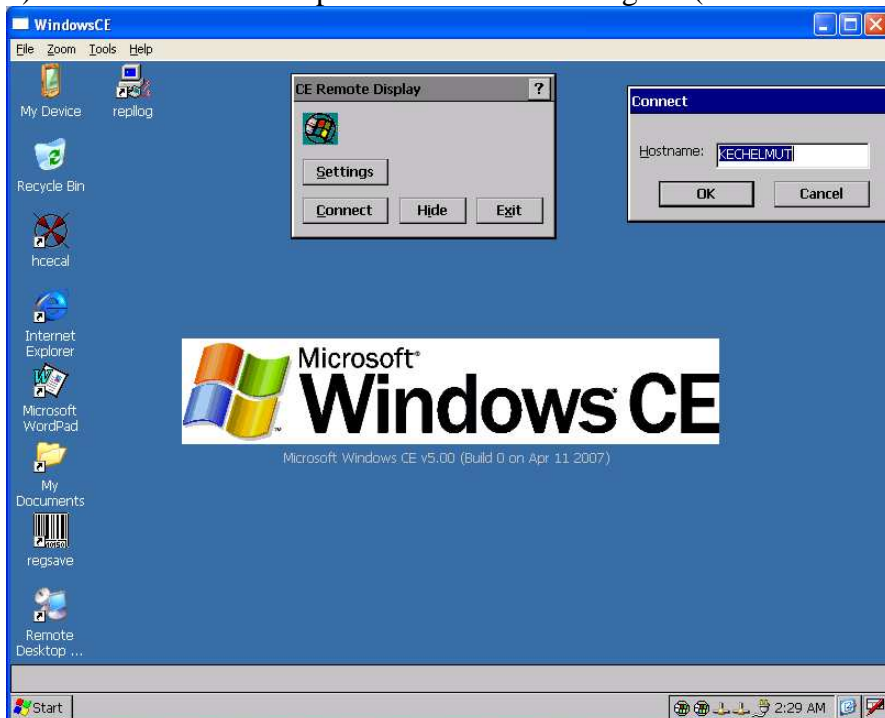
Server Programm: cerdisp.exe (WINCE)

Note: Before using Remote Display you have to make a TCP/IP connection !!

1) Run the “CERhost.exe” programm on the PC



2) Run the “Cerdisp.exe” on the Wince-target (start -> Run -> Cerdisp.exe)



3) Press the “Connect” – Button and type in the dialogbox the Hostname of your PC !

→ The WindowsCE screen will be shown on the PC !!!!

| | | | | | | | |
|---------------------|--------------|---------------------------|--|----------|--|------------------------------------|------------------|
| Kontron vertraulich | | Formularstand: 18.11.2005 | | Dokument | | CE60_Quick Manual_MC ETXPM_V01.doc | |
| Erstellt: | H Ostermeier | Änderung: | | Freigabe | | Datum: | 12.06.2008 |
| | | | | | | | Seite: 36 von 40 |

12 Server

12.1 RAS Server

12.1.1 HOWTO Configure the RAS Server

- 1) Execute the \windows\regedit.exe program
- 2) Put the Ras server configuration desired into the HKLM\Comm\ppp\Server\Parms and HKLM\Comm\ppp\Server\Line\ registry variables
- 3) Save the registry executing the program \windows\regsave.exe
- 4) Reboot the system

The documentation of the Registry Settings are from the Microsoft WINCE - documentation

12.1.1.1 RAS Server-Settings

Registry Path: HKLM\Comm\ppp\Server\Parms

| Value | Type | Default | Meaning |
|-----------------------|-------|-------------------------------|--|
| Enable | DWORD | 0 | Enable(1)\Disable(0) the RAS server. |
| StartupDelaySeconds | DWORD | 20 | Delay until the service starts (at boot time), to wait for other Services to start. |
| UseDHCPAddresses | DWORD | 0 | Assign Ip addresses via DHCP(1) or not (0) |
| UseAutoIpAddresses | DWORD | 1 | Since CE4.1 Set to '1' to have the ras server generate random Ip addresses from the Auto Ip pool |
| AutoIpSubnet | DWORD | 0xC0A80000 = 192.168.x.x | Subnet, that random Ip addresses are created from, if AutoIp is enabled |
| AutoIpSubnetMask | DWORD | (0xFFFF0000 = 255.255.0.0) | |
| StaticIpAddrStart | DWORD | 0xC0A8FE01 | Define the pool for static Ip Addresses if neither AutoIp nor DHCP is enabled |
| StaticIpAddrCount | DWORD | 254 | |
| AuthenticationMethods | DWORD | 0x00040000 | Bitmask, defining which authentication methods are prohibited: RASEO_ProhibitPAP 0x00040000 RASEO_ProhibitCHAP 0x00080000 RASEO_ProhibitMsCHAP 0x00100000 RASEO_ProhibitMsCHAP2 0x00200000 RASEO_ProhibitEAP 0x00400000 |
| Flags | DWORD | 0 | Bitmask. 0x01 Requires data encryption 0x02 Allow unauthenticated access 0x04 Prevent use of VJ header compression 0x08 Prevent data compression |

12.1.1.2 Line-Settings

Registry Path: HKLM\Comm\ppp\Server\Line\

Configuration for the individual devices, listening for incoming connections

Available Devices can be discovered by using the RasEnumDevices API

| Value | Type | Default | Meaning |
|-------------|--------|---------|---|
| Enable | DWORD | 0 | Enable(1)\Disable(0) the RAS server. |
| DeviceType | SZ | 0 | type of the device: "direct" "modem" "vpn" "PPPoE" |
| Device Info | Binary | | |
| Flags | DWORD | 0 | Equal to Server Flags . The Server and Line Flags are 'OR'ed to configure a connection |

12.1.2 Start / Stop the RAS server

Start : Executing the program \windows\rasserver start

Stop : Executing the program \windows\rasserver stop

12.2 Webserver (HTTP Server) (optional)

The Web Root Directory is set to \Storage Card\

13 FAQ

13.1 Autostart the Remote Desktop (with password) (optional)

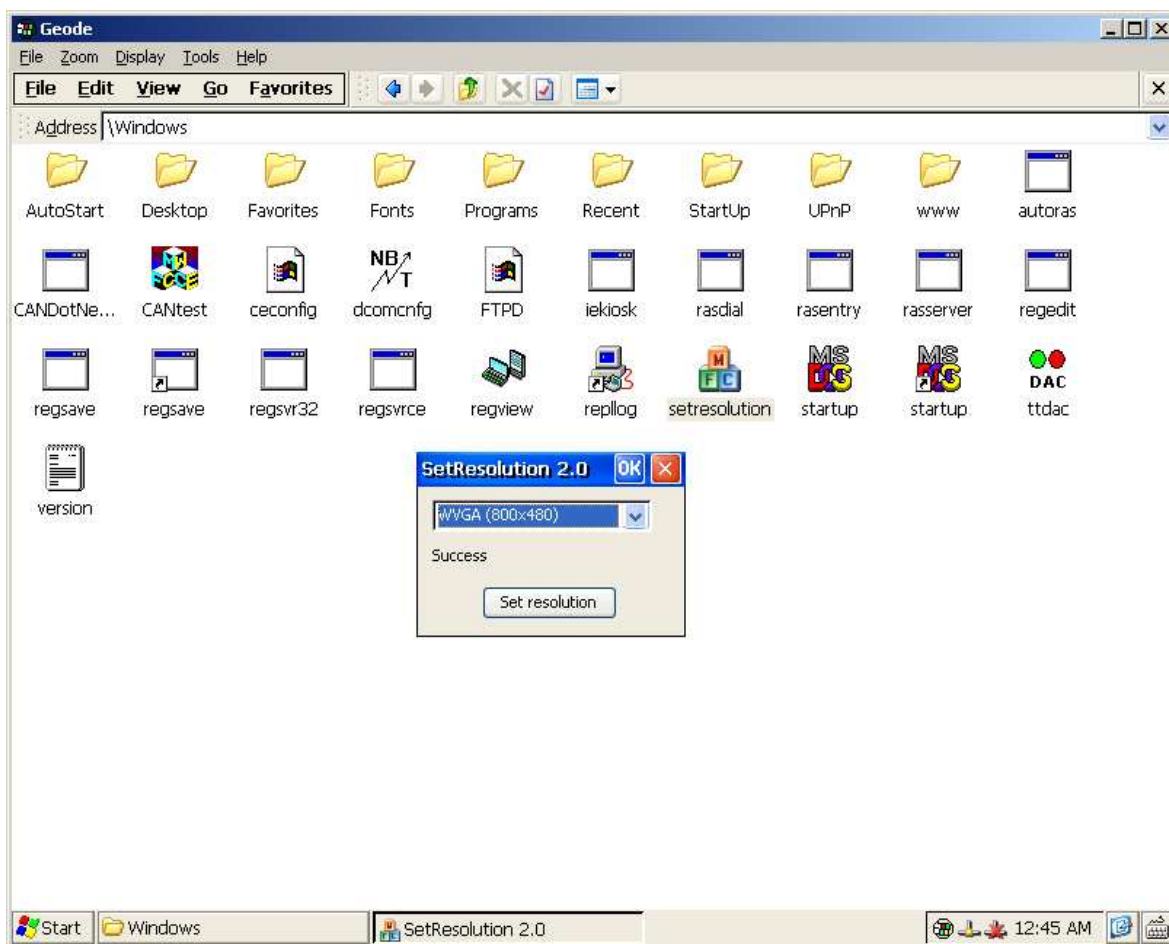
- press “Start” -> press “RUN” -> In the Open field type “cetscp.exe”
 - Press “Options >>”
 - Fill in : “Computer: “ ; “User name:”; “Password:” ; “Domain”
 - Activate “Save my password”
 - Press “Save As” and save the “default.rdp “ file in “Storage Card”\Startup

- include in the startup.bat (\”Storage Card”\Startup) the two lines
 - copy \”Storage Card”\startup\default.rdp \
 - start cetscp.exe default.rdp

After Reboot the Target the RDP will be autostart and connect to the RDP server

13.2 Howto change the Resolution

1) Launch “setresolution “ programm from the \windows folder



2) choice the resolution

- WVGA (800x480) -> 7” Microclient 2
- SVGA (800x600) -> 10”, 12” Microclient 2
- XGA (1024x768) -> 15” Microclient 2

3) Press the “ Set resolution” button and the resolution is saved in the registry

4) After reboot the new resolution is set