

# QUICK MANUAL

Windows XP Embedded (XPE) Image  
for  
Micro Client II(M@CII) and MediClient with ETX-LX

© Copyright 2007 Kontron Embedded Computers GmbH

All right are reserved

Release – 03 / 2007

Kontron vertraulich	Formularstand: 20.01.2006	Dokument	XPe_Quick Manual_MC_ETXLX.doc
Erstellt: Helmut Ostermeier	Änderung:	Freigabe	Datum: 20.01.2006 Seite: 1 von 21

## Revision History

ChangeLog			
Rev	Description	Date	Author
01	Initial Release (V01.00.EWFCF.KEC.08.03.2007.MICLX800).	09.03.2007	H.Ostermeier

## Table of Contents

Image size.....	4
1 BIOS Settings .....	4
1.1 BIOS Settings LX800 Modul .....	4
1.1.1 Standard CMOS Features.....	5
1.1.1.1 IDE Primary Master/Slave .....	6
1.1.2 Advanced BIOS Features.....	7
1.1.3 Advanced Chipset Features .....	8
1.1.4 Integrated Peripherals.....	9
1.1.5 Power Management Setup.....	10
1.1.5.1 IRQ Wakeup Events.....	11
1.1.6 PnP / PCI Configuration .....	12
1.1.6.1 IRQ Resources.....	13
2 FAQ.....	14
2.1 640x480 pixel cannot be set .....	14
2.2 Set "?"-Icon in the symbolbar to the current EWF status.....	14
2.3 Switch On/OFF the CF Protection (EWF).....	15
2.3.1 Variant 1.....	15
2.3.2 Variant 2.....	16
2.4 Howto installation software .....	17
2.5 Touch Calibration .....	17
2.6 Determination of the xpe Image Version\Revision .....	18
2.7 HOWTO configure Remotedesktop .....	19
2.7.1 Configuration Target:.....	19
2.7.2 Start Remote session on Development PC: .....	20

## Image size

Approximately 385 MB

# 1 BIOS Settings

## 1.1 BIOS Settings LX800 Modul ( MLX8R112)

Note:

- The most important Settings are marked blue !!!!
- Press „DEL „ Key as long as booting the BIOS-setup starts

### 1.1.1 Standard CMOS Features

Phoenix -AwardBIOS CMOS Setup Utility		
Standard CMOS Features		
Date (mm:dd:yy)	Xxxxxx	Item help
Time (hh:mm:ss)	Xxxxxx	
		Menu Level >
> IDE Primary Master	[ CompactFlash name ]	
> IDE Primary Slave	[ None ]	
Drive A	[ None ]	
Halt On	[All, But Keyboard]	
Halt After CMOS Restore	[ Disabled ]	
Base Memory	Xxxxx	
Extended Memory	Xxxxx	
Total Memory	Xxxxx	
↑ ↓ → ← : Move    Enter : Select    +/-/PU/PD : Value    F10 : Save    ESC : Exit    F1 : General Help F5 : Previous Values    F6 : Fail-Safe Defaults    F7 : Optimized Defaults		

### 1.1.1.1 IDE Primary Master/Slave

Phoenix -AwardBIOS CMOS Setup Utility IDE Primary/Secondary Master/Slave		
IDE HDD Auto-Detection	Press Enter	Item help
IDE Primary Master	AUTO	
Access Mode	CHS	Menu Level >
Capacity	XXXX	
Cylinder	XXXX	
Head	XXXX	
Precomp	XXXX	
Landing Zone	XXXX	
Sector	XXXX	
↑ ↓ → ← : Move    Enter : Select    +/-/PU/PD : Value    F10 : Save    ESC : Exit    F1 : General Help F5 : Previous Values    F6 : Fail-Safe Defaults    F7 : Optimized Defaults		

### 1.1.2 Advanced BIOS Features

Phoenix –AwardBIOS CMOS Setup Utility Advanced BIOS Features		
> Hard Disk Boot Priority	[ Press Enter]	Item help
First Boot device	[Hard Disk]	Menu Level >
Second Boot device	[USB-FDD]	
Third Boot device	[CDROM]	
Boot Other Devices	[Enabled]	
PXE Lanboot	[Disabled]	
Virus Warning	[Disabled]	
CPU Internal Cache	[Enabled]	
Darkboot / Custom Logo	[Disabled]	
Boot up NumLock Status	[ON]	
Boot up Floppy Seek	[Enabled]	
Gate A20 Options	[Fast]	
SERIRQ Mode	[Quiet]	
FPU Imprecise Exceptions	[Enabled]	
Security Option	[Setup]	
Video BIOS Shadow	[Enabled]	
C8000-CBFFF Shadow	[Disabled]	
CC000-CFFFF Shadow	[Disabled]	
D0000-D3FFF Shadow	[Disabled]	
D4000-D7FFF Shadow	[Disabled]	
D8000-DBFFF Shadow	[Disabled]	
DC000-DFFFF Shadow	[Disabled]	
↑ ↓ → ← : Move    Enter : Select    +/-/PU/PD : Value    F10 : Save    ESC : Exit    F1 : General Help F5 : Previous Values    F6 : Fail-Safe Defaults    F7 : Optimized Defaults		

### 1.1.3 Advanced Chipset Features

Phoenix -AwardBIOS CMOS Setup Utility		
Advanced Chipset Features		
CPU Frequency	[Enabled]	Item help
Memory Frequency	:Auto	
Video Memory Size	[ 8 MB]	Menu Level >
Output Display	[LCD & CRT]	
Resolution	[SVGA]	
Onboard Audio	[Disabled]	
Onboard IDE	[Enabled]	
SATA / 2 <sup>nd</sup> IDE	[Enabled]	
PATA IO Address	[Auto]	
CHS Translation	[Enabled]	
USB Ports	[USB 2.0]	
Memory Hole At 15M-16M	[Disabled]	
↑ ↓ → ← : Move    Enter : Select    +/-/PU/PD : Value    F10 : Save    ESC : Exit    F1 : General Help F5 : Previous Values    F6 : Fail-Safe Defaults    F7 : Optimized Defaults		

### 1.1.4 Integrated Peripherals

Phoenix -AwardBIOS CMOS Setup Utility		Item help
Integrated Peripherals		
Master Drive PIO Mode	[Auto]	Menu Level >
Slave Drive PIO Mode	[Auto]	
IDE Primary Master UDMA	[Disabled]	
IDE Primary Slave UDMA	[Disabled]	
IDE DMA transfer access	[Enabled]	
IDE HDD Block Mode	[Disabled]	
Onboard Floppy Controller	[Disabled]	
Onboard Serial Port 1	[3F8 / IRQ4]	
Onboard Serial Port 2	[2F8 / IRQ3]	
UART Mode Select	[Normal]	
Onboard Parallel Port	[378/IRQ7]	
Parallel Port Mode	[Standard]	
EPP Mode Select	EPP1.7	
Watchdog Function	[Disabled]	
External FDC Controller	[Disabled]	
External Serial Port 3	[Disabled]	
External Serial Port 4	[Disabled]	
External Parallel Port	[Disabled]	
↑ ↓ → ← : Move    Enter : Select    +/-/PU/PD : Value    F10 : Save    ESC : Exit    F1 : General Help F5 : Previous Values    F6 : Fail-Safe Defaults    F7 : Optimized Defaults		

### 1.1.5 Power Management Setup

Phoenix -AwardBIOS CMOS Setup Utility		
Power Management Setup		
ACPI function	: Enabled	Item help
Power Management	[ACPI]	
ACPI Suspend Type	[S1&S3]	Menu Level >
** PM Timers **		
Standby Mode	Disabled	
Suspend Mode	Disabled	
PME Event Function	[Enabled]	
Soft-Off by PWRBTN	[Instant Off]	
Power-On by Alarm	[Disabled]	
Time (hh:mm:ss) Alarm	0	
> IRQ Wakeup Events	[Press Enter]	
↑ ↓ → ← : Move    Enter : Select    +/-/PU/PD : Value    F10 : Save    ESC : Exit    F1 : General Help F5 : Previous Values    F6 : Fail-Safe Defaults    F7 : Optimized Defaults		

### 1.1.5.1 IRQ Wakeup Events

Phoenix -AwardBIOS CMOS Setup Utility			
IRQs Activity Monitoring			
IRQ1 (Keyboard)	[ON]	Item help	
IRQ3 (COM 2)	[OFF]		
IRQ4 (COM 1)	[OFF]	Menu Level >	
IRQ5 (LPT 2)	[OFF]		
IRQ7 (LPT 1)	[OFF]		
IRQ8 (RTC Alarm)	[OFF]		
IRQ9 (IRQ2 Redir)	[OFF]		
IRQ10 (Reserved)	[OFF]		
IRQ11 (Reserved)	[OFF]		
IRQ12 (PS/2 Mouse)	[OFF]		
↑ ↓ → ← : Move    Enter : Select    +/-/PU/PD : Value    F10 : Save    ESC : Exit    F1 : General Help F5 : Previous Values    F6 : Fail-Safe Defaults    F7 : Optimized Defaults			

### 1.1.6 PnP / PCI Configuration

Phoenix -AwardBIOS CMOS Setup Utility PnP / PCI Configuration		
PnP OS installed	[YES]	Item help
Init Display First	[PCI/ISA Slot]	
Reset Configuration Data	[Disabled]	Menu Level >
Resources Controlled by	[Manual]	
> IRQ Resources	[Press Enter]	
> Memory Resources	[Press Enter]	
INT Pin1 Assignment	[Auto]	
INT Pin2 Assignment	[Auto]	
INT Pin3 Assignment	[Auto]	
INT Pin4 Assignment	[Auto]	
↑ ↓ → ← : Move    Enter : Select    +/-/PU/PD : Value    F10 : Save    ESC : Exit    F1 : General Help F5 : Previous Values    F6 : Fail-Safe Defaults    F7 : Optimized Defaults		

### 1.1.6.1 IRQ Resources

Phoenix -AwardBIOS CMOS Setup Utility		
IRQ Resources		
IRQ-3 assigned to	[PCI Devices]	Item help
IRQ-4 assigned to	[PCI Devices]	
IRQ-5 assigned to	[PCI Devices]	
IRQ-7 assigned to	[PCI Devices]	Menu Level >
IRQ-9 assigned to	[PCI Devices]	
IRQ-10 assigned to	[Reserved]	
IRQ-11 assigned to	[PCI Devices]	
IRQ-12 assigned to	[Reserved]	
IRQ-14 assigned to	[Reserved]	
IRQ-15 assigned to	[Reserved]	
↑ ↓ → ← : Move    Enter : Select    +/-/PU/PD : Value    F10 : Save    ESC : Exit    F1 : General Help F5 : Previous Values    F6 : Fail-Safe Defaults    F7 : Optimized Defaults		

## 2 FAQ

### 2.1 640x480 pixel cannot be set

Setting Resolution to 640x480 pixel if a 640x480 resolution cannot be set in "Settings" :

- Right-click on Desktop
- Click "Properties"
- Click "Settings"
- Click "Advanced"
- Click „Adapter“
- Click "List All Modes"
- 640 by 480, High Color (16 bit), 60 Hertz → OK

### 2.2 Set “?”-Icon in the symbolbar to the current EWF status

- 2 x Click on the symbol right below and set to the listed device



Note :



**RED** : Enhanced Write Filter switch off (disabled) -> you can installing software on the CF .



**Green**: Enhanced Write Filter switch on (enabled) -> CF protection is enabled

Kontron vertraulich		Formularstand: 20.01.2006		Dokument		XPe_Quick Manual_MC_ETXLX.doc	
Erstellt:	Helmut Ostermeier	Änderung:		Freigabe	Datum:	20.01.2006	Seite: 14 von 21

## 2.3 Switch On/OFF the CF Protection (EWF)

### 2.3.1 Variant 1

- Double click on the "EWFController" icon on the Desktop



Enable -> Switch On (enable) the EWF -> CF Protection


Commitanddisable -> Switch Off (disable) the EWF

NOTE: The choice is activated after a reboot !!!

### 2.3.2 Variant 2

- Launch the DOS-BOX (cmd.exe)

```
"ewfmgr c:" - EWF status
```



```
C:\WINDOWS\system32\cmd.exe
Microsoft Windows XP [Version 5.1.2600]
(C) Copyright 1985-2001 Microsoft Corp.

C:\Documents and Settings\Administrator>ewfmgr c:
Protected Volume Configuration
Type                RAM (REG)
State               DISABLED
Boot Command        NO_CMD
  Param1             0
  Param2             0
Volume ID           92 CA CD 71 00 7E 00 00 00 00 00 00 00 00 00
Device Name         "\\Device\HarddiskVolume1" [C:]
Max Levels          1
Clump Size          512
Current Level       N/A

Memory used for data 0 bytes
Memory used for mapping 0 bytes
```

#### Enable the EWF:

- (1) "ewfmgr c: -enable" -> EWF enable ( CF Protection)
- (2) "xpepm -restart" -> reboot the system

#### Disable the EWF:

- (1) "ewfmgr c: -commitanddisable" -> EWF disabled
- (2) "xpepm -restart" -> reboot the system

## 2.4 Howto installation software

- Disable the EWF (see 5.3)
- Reboot the system
- Check the EWF state -> (see 5.2)
- Install software
- Enable the EWF. (see 5.3)
- Reboot des systems.
- Check the EWF state -> (see 5.2)

## 2.5 Touch Calibration

- Disable the EWF (see 5.3)
- Reboot the system
- Check the EWF state -> (see 5.2)
- 
- Double click on the "hwincal.exe" icon and follow the directions
- 
- Enable the EWF. (see 5.3)
- Reboot des systems.
- Check the EWF state -> (see 5.2)

Kontron vertraulich		Formularstand: 20.01.2006		Dokument		XPe_Quick Manual_MC_ETXLX.doc	
Erstellt:	Helmut Ostermeier	Änderung:		Freigabe	Datum:	20.01.2006	Seite: 17 von 21

## 2.6 Determination of the xpe Image Version\Revision

- click on Start -> Settings -> Control Panel -> System



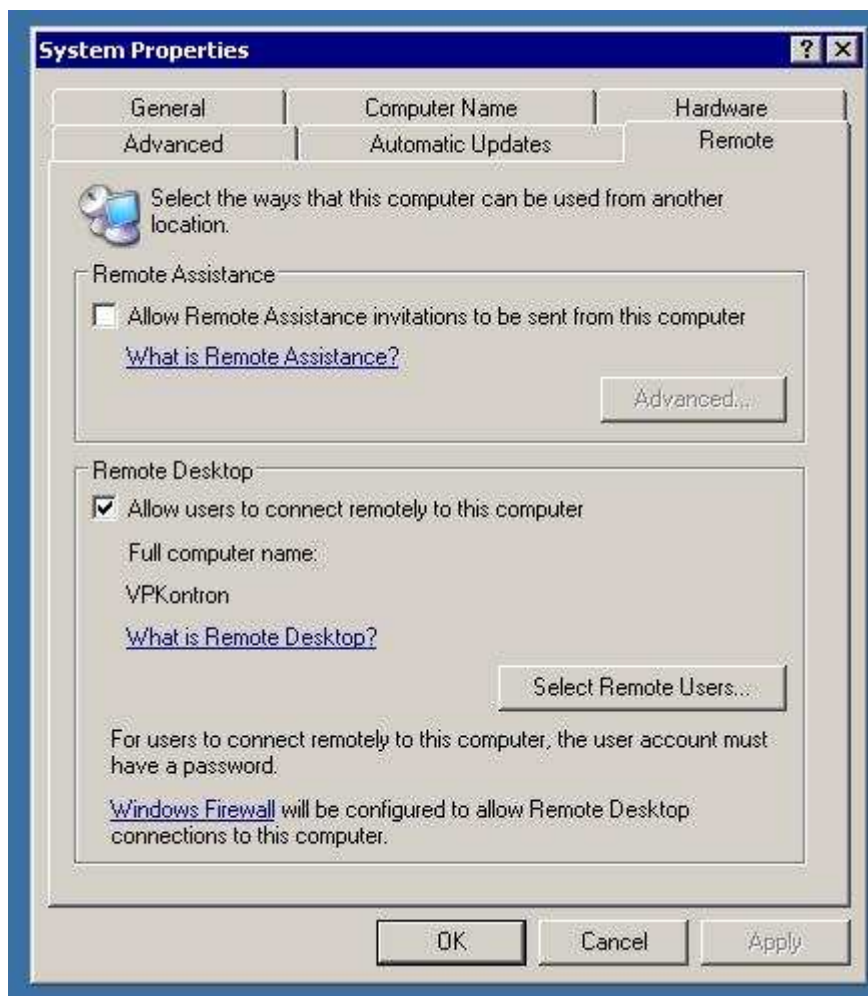
- click on "Support information"



## 2.7 HOWTTO configure Remotedesktop

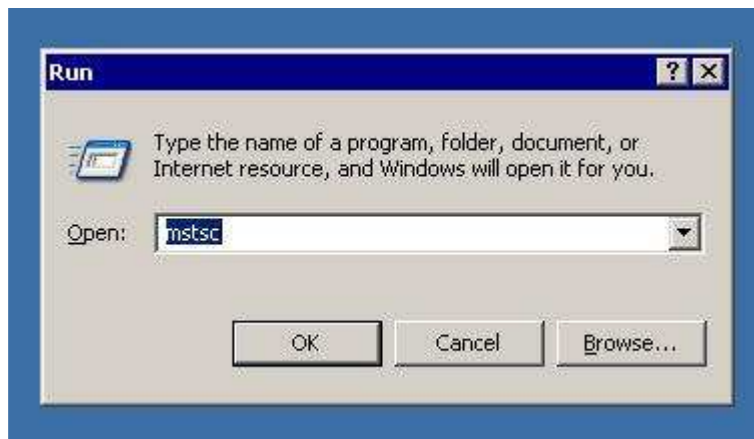
### 2.7.1 Configuration Target:

Start -> Settings -> Control Panel -> System -> Remote Desktop



## 2.7.2 Start Remote session on Development PC:

- click on Start -> Run -> Launch the Programm “mstsc” -> click on “OK” on the Development PC

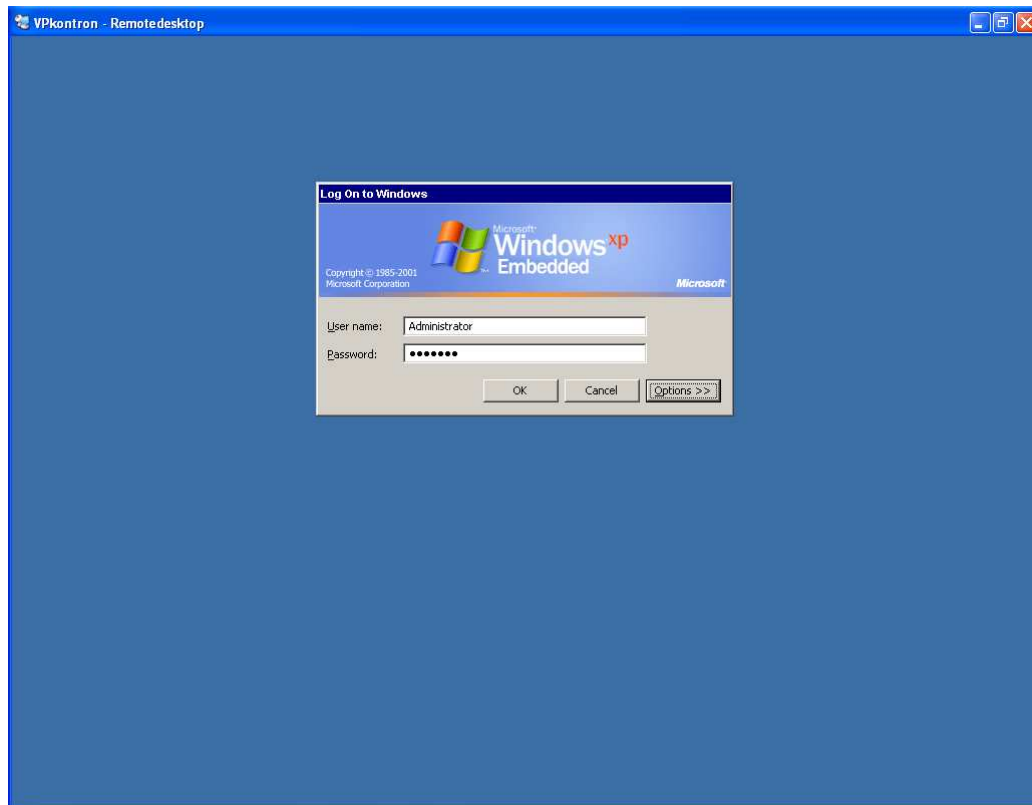


- Remote Desktop Connection is shown
- Write the Computername of the Remote Computer (Target) in the Dialogbox ( e.g VPkontron)
- Press “Connect”

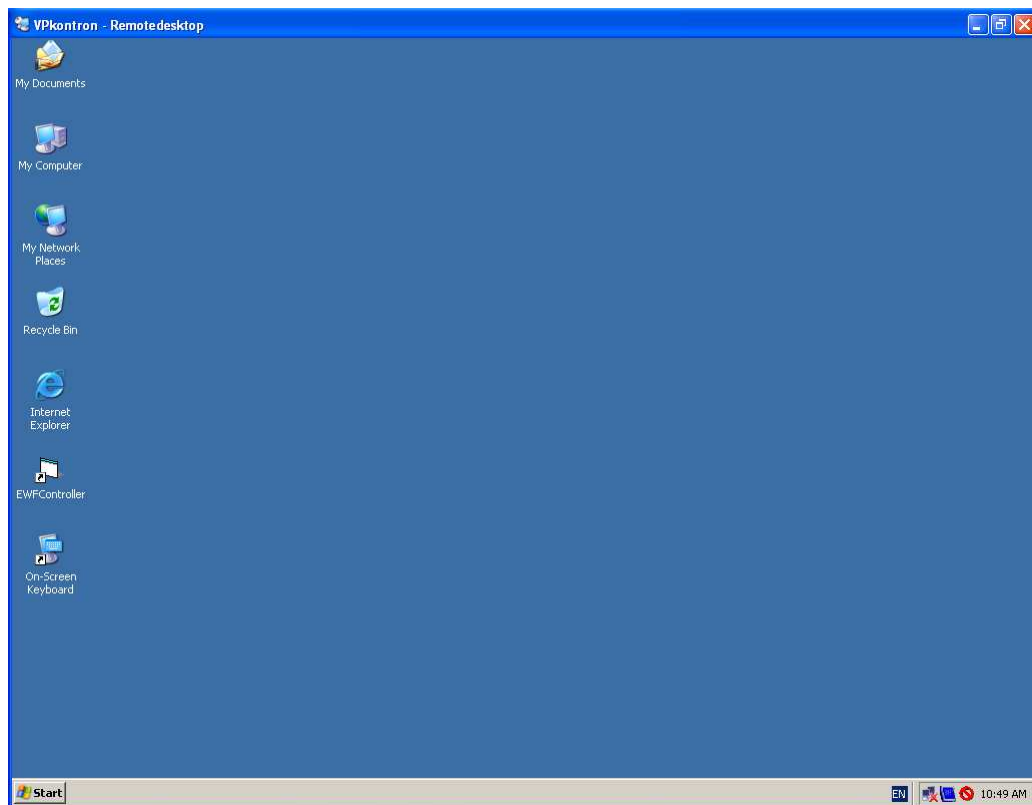


“Log On” to the Remote Desktop

**User Name: Administrator**  
**Password : kontron**



After the Logon the " Remote Desktop " of the Target appear



Kontron vertraulich		Formularstand: 20.01.2006		Dokument		XPe_Quick Manual_MC_ETXLX.doc	
Erstellt:	Helmut Ostermeier	Änderung:		Freigabe	Datum:	20.01.2006	Seite: 21 von 21