

## Quick Start – Guide to install panel files for CRTtoLCD-2 and -3 controller

### Which components do you need to install panel files?

1. CRTtoLCD-2 or -3 controller
2. KAB-COM ( P/N 61004) to connect the CRTtoLCD-2 via RS232
3. Power supply with 12V-DC / 3A for the CRTtoLCD-2
4. PC with VGA-signal-output (640x480@60Hz is recommended) and standard 9-pin RS232 interface
5. 15-pin standard VGA-Cable
6. *Panel Editor V1.05* (Software to update / edit panel- and mode-files). You can download the *Panel Editor* under the following link.

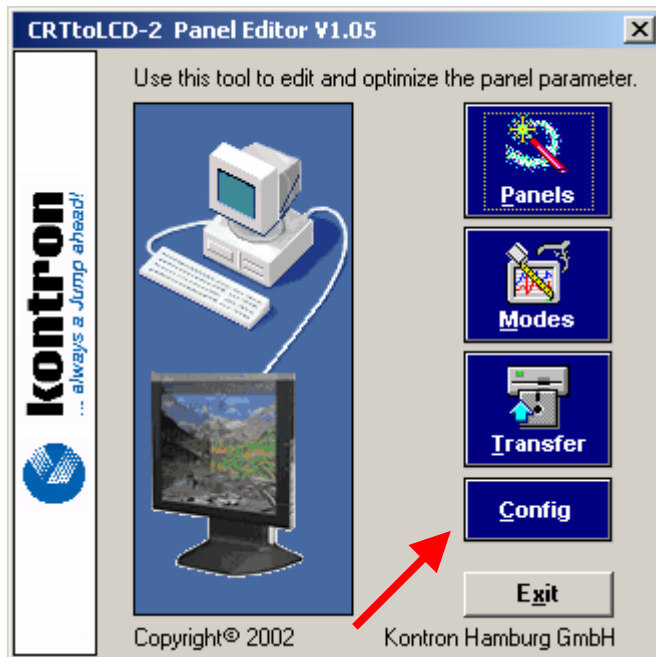
<http://www.kontron-hh.com/download/index.php?pfad=%2FGraphic+products%2FaFLAT-Series%2FCRTtoLCD-2%2FPanel+Editor&language=>

### Preparing the CRTtoLCD-2

1. Plug the serial cable into Serial-OSD connector (CN101, refer to CRTtoLCD-2 or -3 manual) and into your PC-COM-Port
2. Connect the VGA-cable to CRTtoLCD-2 or -3
3. Plug 12V-DC power supply to CTRtoLCD-2 or -3
4. Power up the CRTtoLCD-2 or -3 controller
5. Start the *Panel Editor*. The name of the executable file is *PnlEdt2.exe*

## Updating the panel file

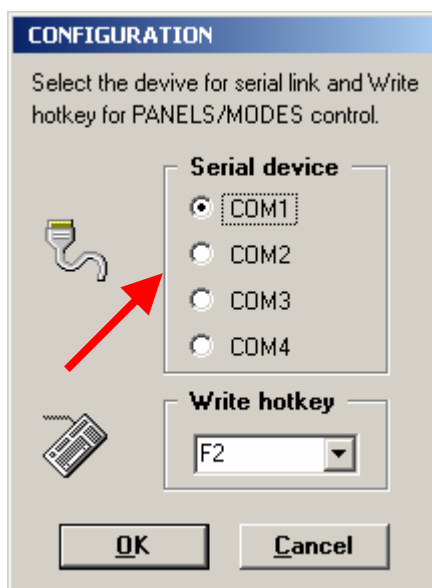
### Step 1



After starting the *Panel Editor V1.05*, ensure that you are using version 1.05 of the *Panel Editor*. The version number is shown in the title bar.

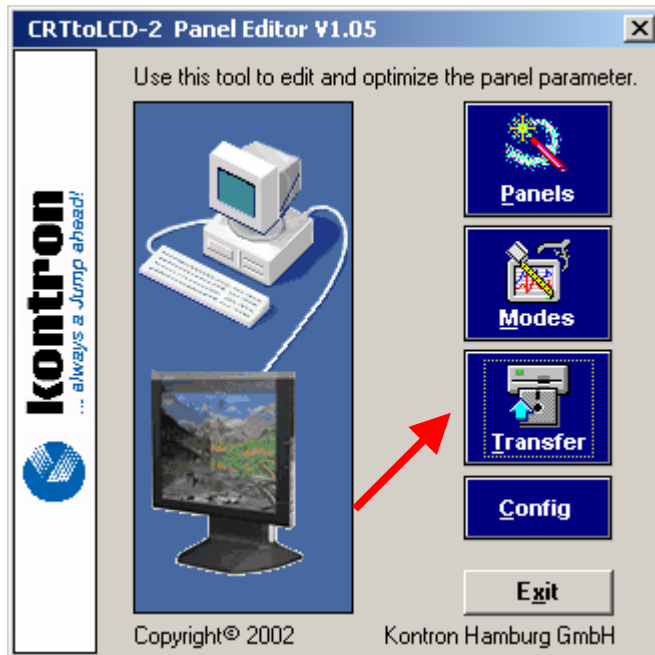
Click on the **CONFIG** button to get to the serial configuration menu.

### Step 2



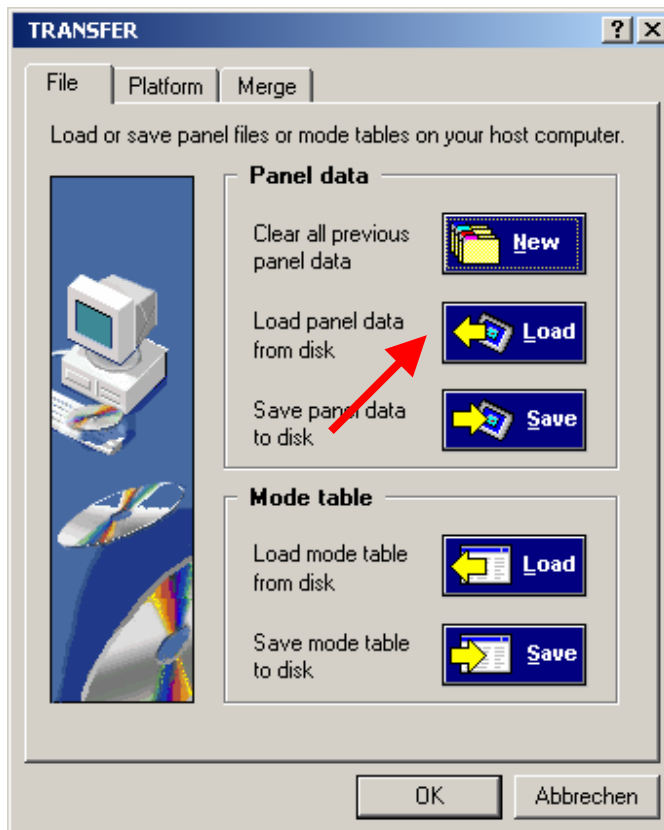
Select your used PC-COM-Port and click **OK** to return to the main menu.

### Step 3



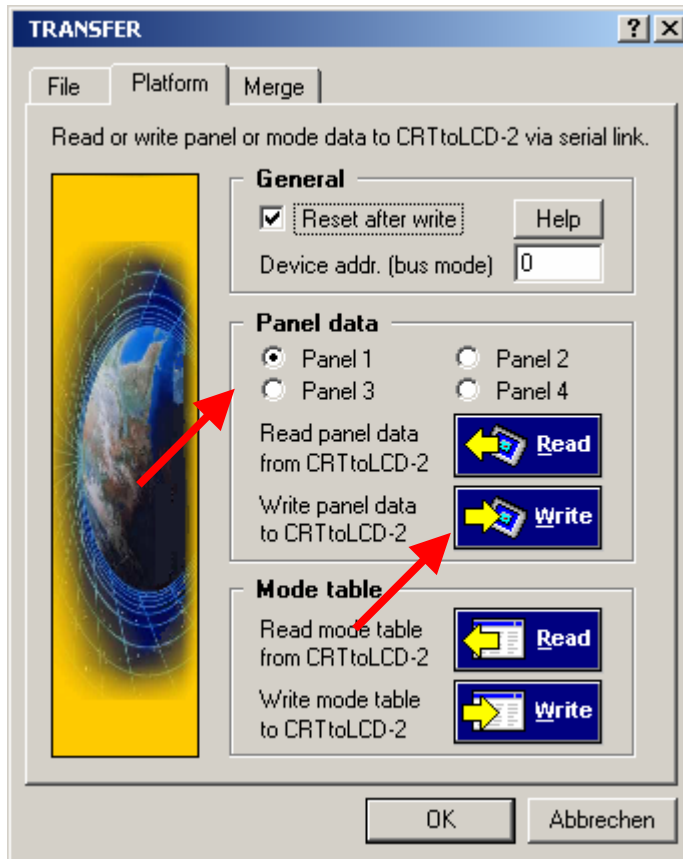
Click on the **Transfer** button to get to the *Transfer menu* where you can load / update the panel files

### Step 4



On the tab **File** under **Panel data**, select **Load** to select the panel file you want to load / update. If you have loaded the panel file choose the tab **Platform**

## Step 5



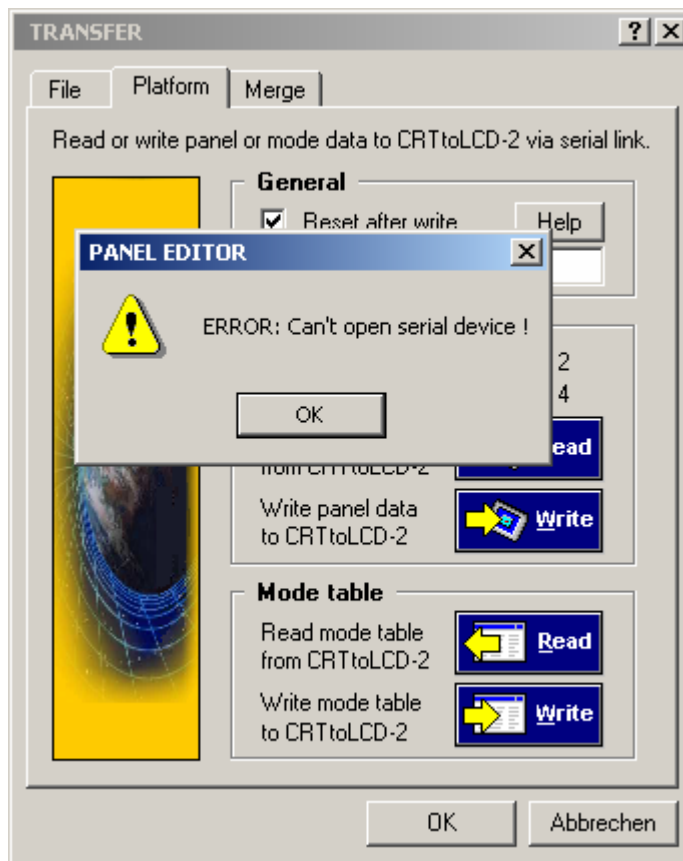
Leave all setting as shown. Select the position ( 1 – 4 ) with the option buttons where your panel file should be written **Note1**.

Click **Write** to transfer your panel file to the CTRtoLCD-2 or -3. If the file was written successfully, the CRTtoLCD-2 or -3 will do a reset and the new panel file is transferred.

**Note1:** Please refer to your CRTtoLCD-2 or -3 manual (Page 6/7) how to configure the DIP-Switches for the used panel file on the CTRtoLCD-2 or -3.

If you got an error message that the serial device can not be opened (figure 1) check these following steps:

1. Check all cables and connections?
2. Did you select the right COM-Port in step 2 and has the cable been plugged into the correct COM-connector?
3. Check power supply for the CTRtoLCD-2 or -3
4. Begin with step 1 and try again



**Please note:**

In this document Kontron Hamburg GmbH & Co.KG will also be referred to by the short form "Kontron Hamburg". The information in this document has been carefully checked and is believed to be accurate and reliable. However, no responsibility is assumed for inaccuracies. Furthermore, Kontron Hamburg reserves the right to make changes to any portion of this manual to improve reliability, function or design. Kontron Hamburg does not assume any liability for any product or circuit described herein.

Copyright 2005 by Kontron Hamburg GmbH & Co.KG.